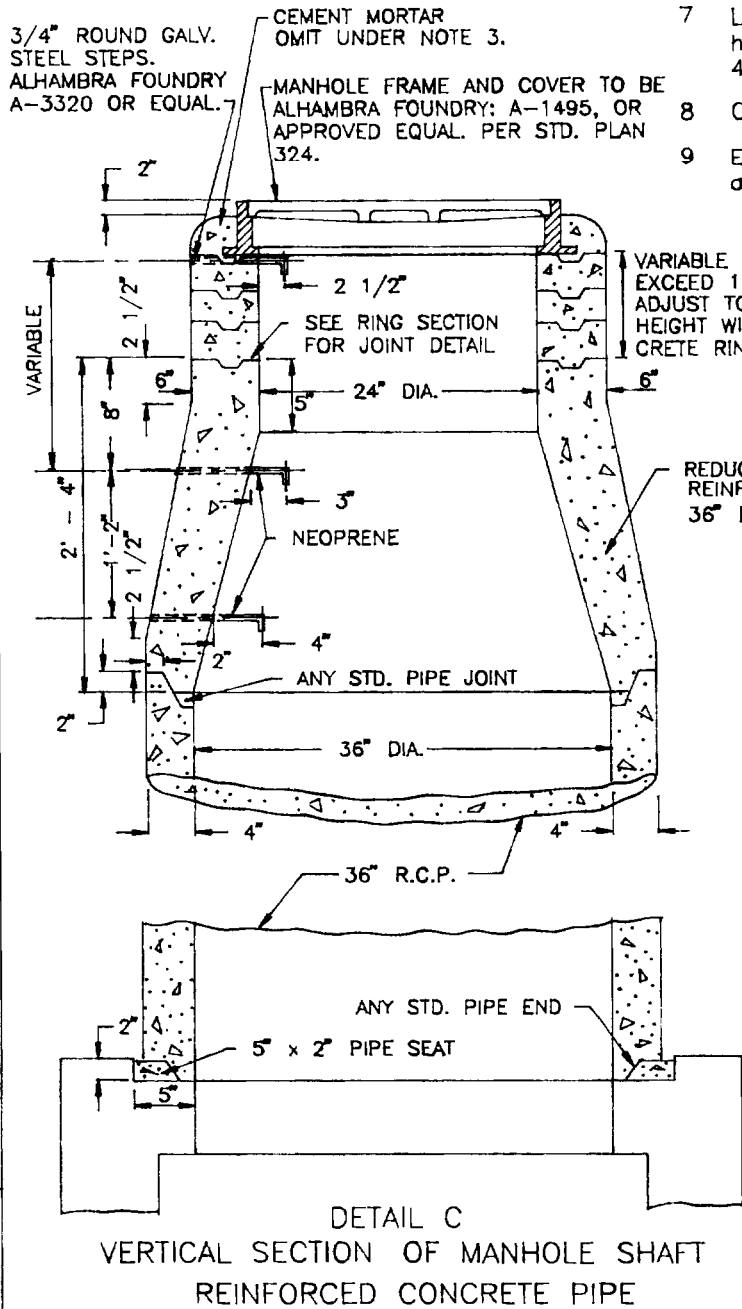


**NOTES**

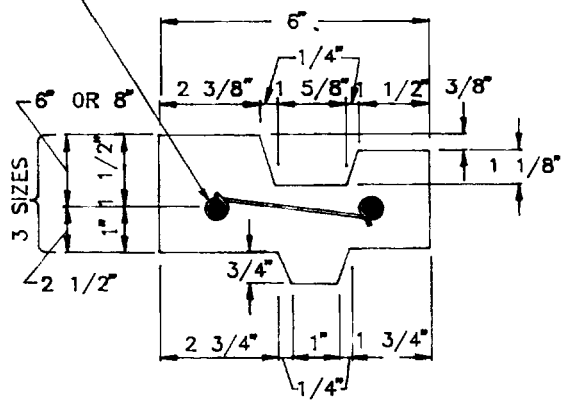
- 1 CONCRETE for poured units shall be 560-D-3250.
- 2 JOINTS shall be filled with cement mortar and neatly pointed or wiped on inside of shaft.
- 3 COLLAR of cement mortar around cover frame shall be omitted in rock and oil streets in paved streets.
- 4 CONCRETE RINGS shall be of the dimensions shown and reinforced as shown hereon.
- 5 STEPS shall be 3/4" round galvanized steel. Top step shall be placed directly beneath the manhole covering with legs extending into wall of shaft on radial lines. Width of all steps shall be 1'-2" between leg centers. Except where shown otherwise, spacing of steps in shaft shall be 1'-5" between centers. ALHAMBRA Fdy. A-3320 or equal.
- 6 REINFORCED UNITS may be used at the option of the contractor, conforming to specifications for Reinforced Concrete Pipe and to Detail C on Sheet 2.
- 7 LENGTH of sections of 36" R.C.P. for manhole shaft may be 1'-0", 2'-0", 3'-0" or 4'-0" at the option of the contractor.
- 8 COVER shall have letter D in center.
- 9 ECCENTRIC REDUCERS may be used with city approval.



VARIABLE NOT TO EXCEED 1' - 6" ADJUST TO REQ'D HEIGHT WITH CONCRETE RINGS

REDUCER SHALL BE REINFORCED AS FOR 36" R.C.P.

2 1/2" RINGS SHALL BE REINFORCED WITH TWO #2 STEEL HOOPS; 6" & 8" RINGS SHALL BE REINFORCED WITH 4 & 6 HOOPS; TIED WITH #14 A.S. & W GAGE WIRE 8" O.C.



**CITY OF RANCHO CUCAMONGA, CALIFORNIA**

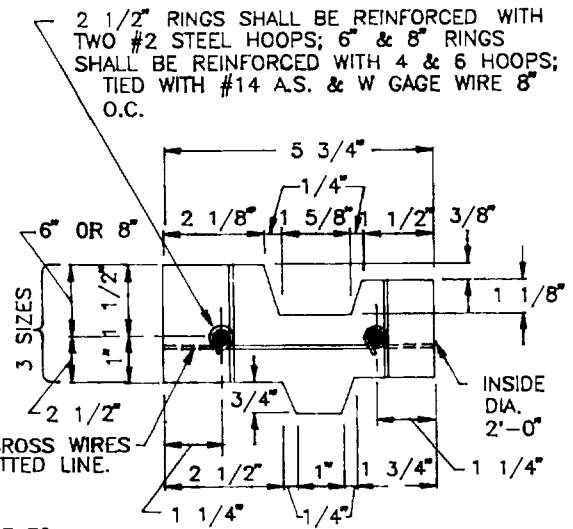
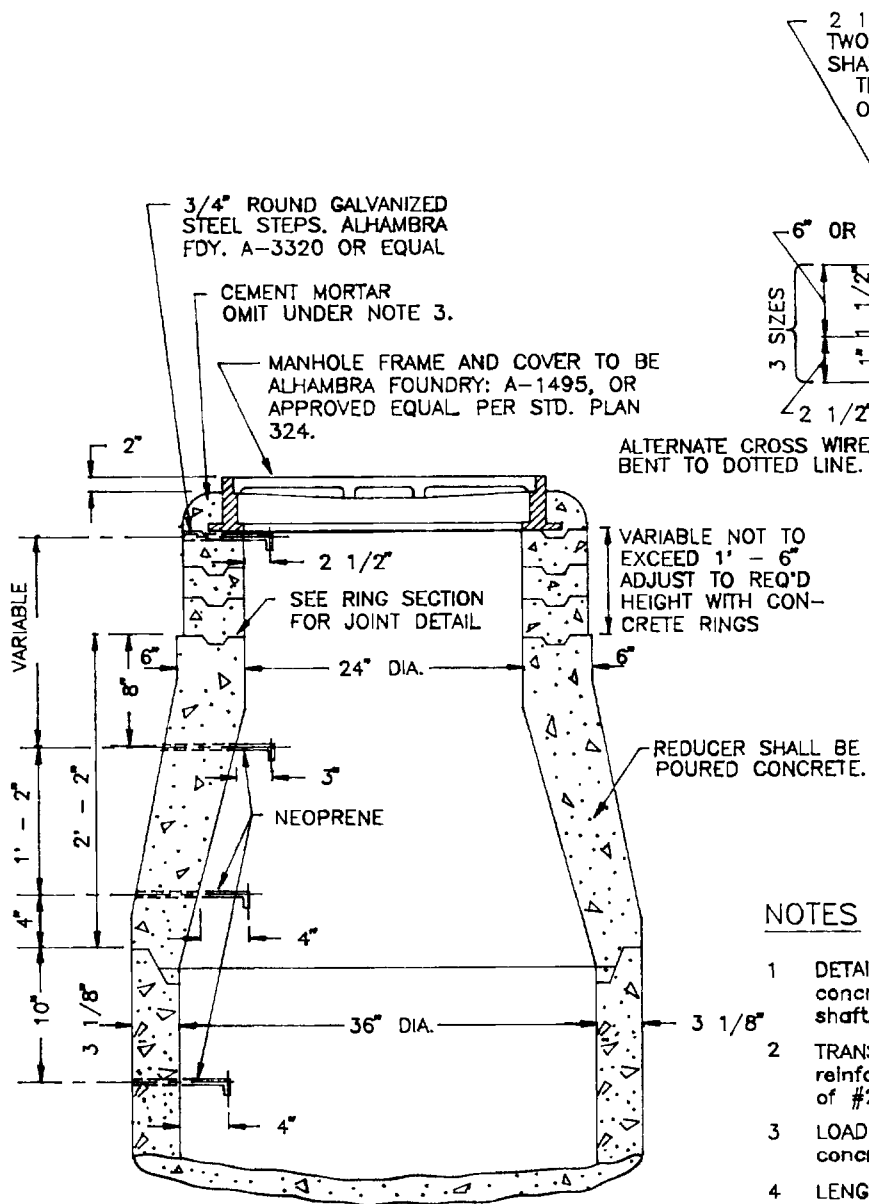
7-20-92  
REVISED

APPROVED BY:  
*Monreal* 6-1-92  
CITY ENGINEER  
R.C.E. 24953

**MANHOLE SHAFT - 36"**  
**WITH CONCENTRIC REDUCER**

USE WITH STANDARD SPECIFICATIONS FOR PUBLIC WORKS CONSTRUCTION

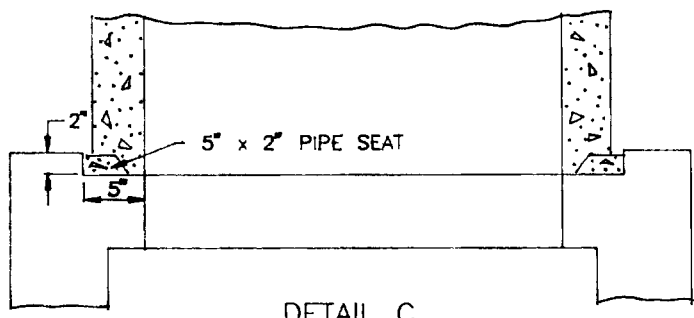
STANDARD PLAN  
**323-A**  
SHEET 1 OF 2



DETAIL B  
CROSS SECTION  
OF  
CONCRETE RING

**NOTES**

- 1 DETAIL C shall apply when reinforced concrete pipe and rings are used in manhole shaft, as per Note 6 on Sheet 1.
- 2 TRANSVERSE REINFORCING STEEL for 36" reinforced concrete pipe shall consist of coils of #2 rods spaced 4" c to c or closer.
- 3 LOADING TEST is not required for reinforced concrete pipe used for manhole shaft.
- 4 LENGTH of pipe sections for manhole shaft may be 1'-2", 2'-6" or 3' 10 3/4" at the option of the contractor.
- 5 ADDITIONAL NOTES for Detail C are shown on Sheet 1 of 2.



DETAIL C  
VERTICAL SECTION OF MANHOLE SHAFT  
REINFORCED CONCRETE PIPE

**CITY OF RANCHO CUCAMONGA, CALIFORNIA**

REVISED 7-20-92

APPROVED BY:  
*Whorwell* 6-1-92  
CITY ENGINEER  
R.C.E. 24953

**MANHOLE SHAFT - 36"**  
**WITH CONCENTRIC REDUCER**  
USE WITH STANDARD SPECIFICATIONS FOR PUBLIC WORKS CONSTRUCTION

STANDARD PLAN  
**323-A**  
SHEET 2 OF 2