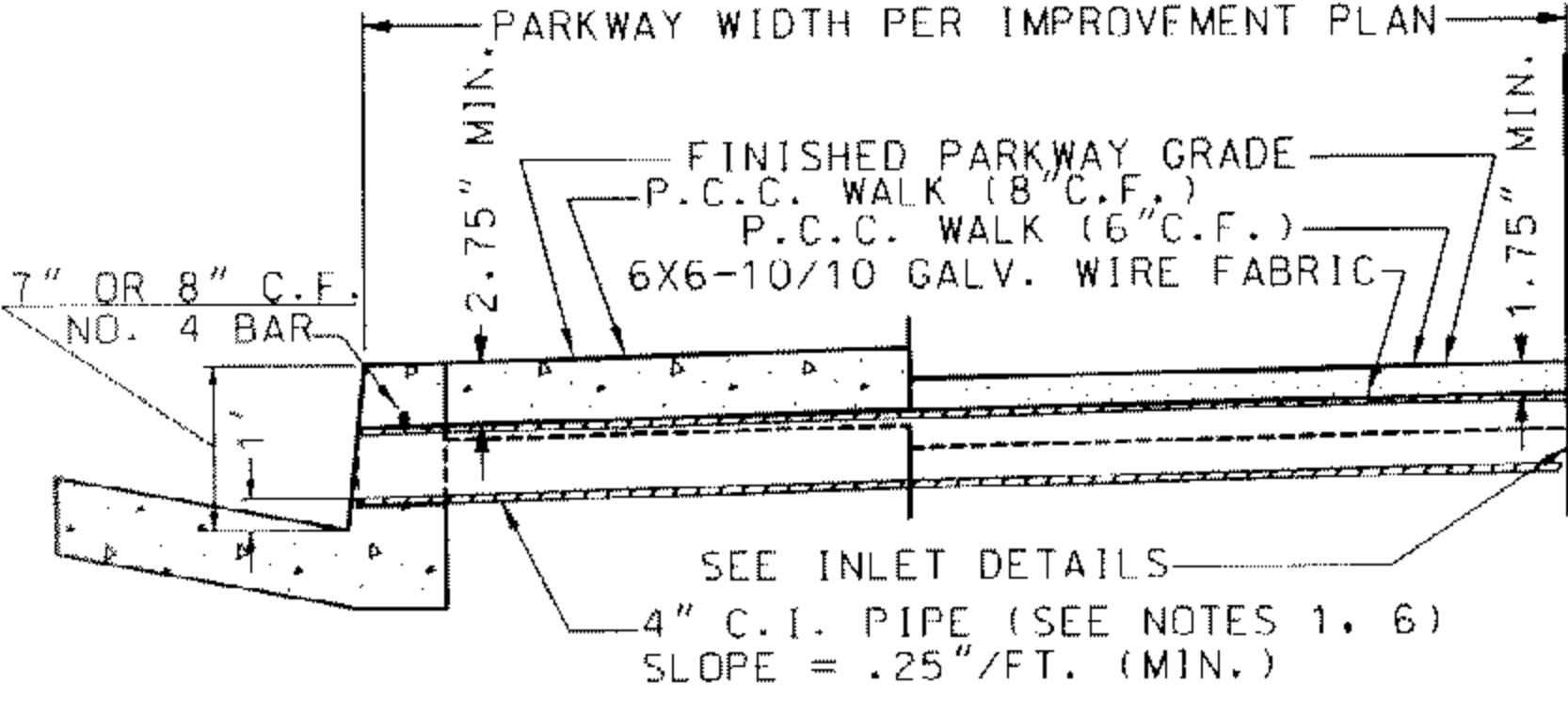


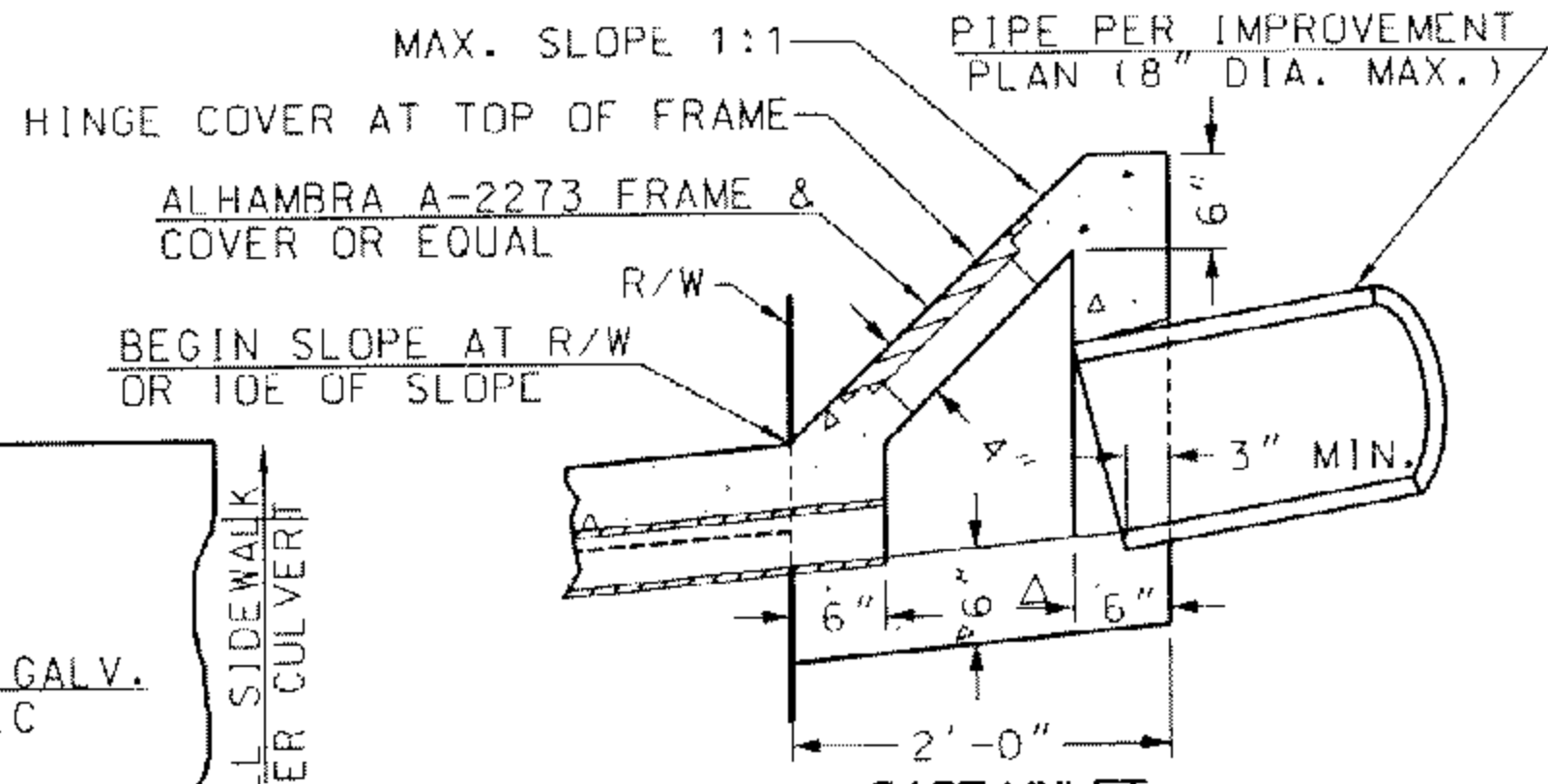
PLAN



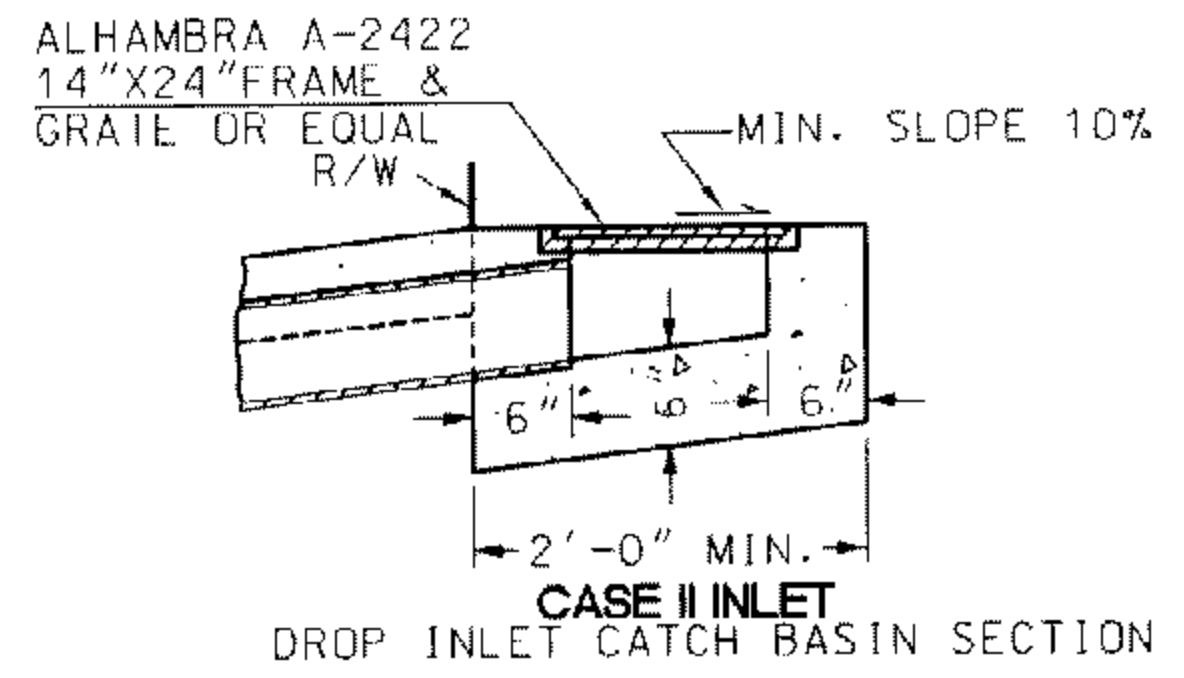
SECTION A-A

NOTES:

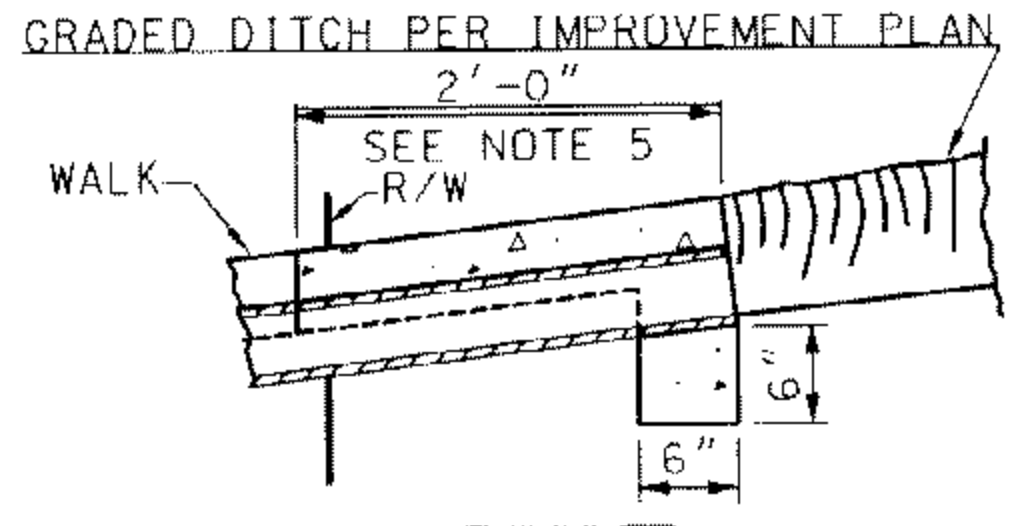
1. 'N' EQUALS NUMBER OF PIPES (MAX. OF 3) AS SPECIFIED ON PLAN.
2. ANGLE 'A' EQUALS 0° UNLESS OTHERWISE SPECIFIED.
3. INLET TYPE TO BE SPECIFIED ON IMPROVEMENT PLAN.
4. TOP OF INLET STRUCTURES (CASE I & II) ARE TO BE FLUSH WITH ADJACENT SURFACE WHERE POSSIBLE.
5. FOR GRADED DITCH APPROACH (CASE III), EXTENSION BEYOND R/W LINE IS NOT REQUIRED WHEN BACK OF WALK IS 2' OR MORE FROM R/W LINE.
6. ALHAMBRA A-470 RECT. C.I. PIPE OR EQUAL, RECT. OR RD.AC. PIPE, OR P.V.C. PIPE (SCHEDULE 40) OF EQUIVALENT AREA MAY BE SUBSTITUTED.
7. ALL EXPOSED METAL SHALL BE GALVANIZED AFTER FABRICATION. ALL EXPOSED CAST IRON FIXTURES SHALL HAVE A BITUMINOUS COATING.
8. CONCRETE SHALL BE 520-C-2500.



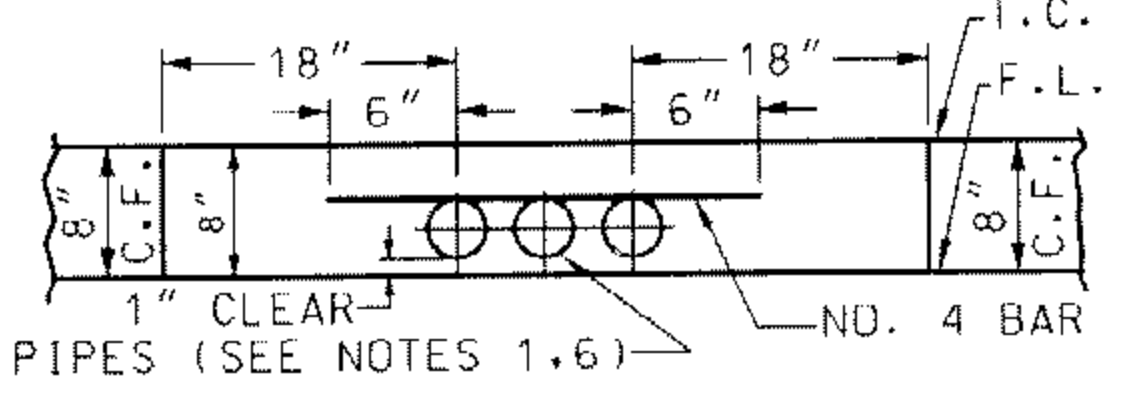
CASE I INLET TRANSITION STRUCTURE SECTION



CASE II INLET DROP INLET CATCH BASIN SECTION

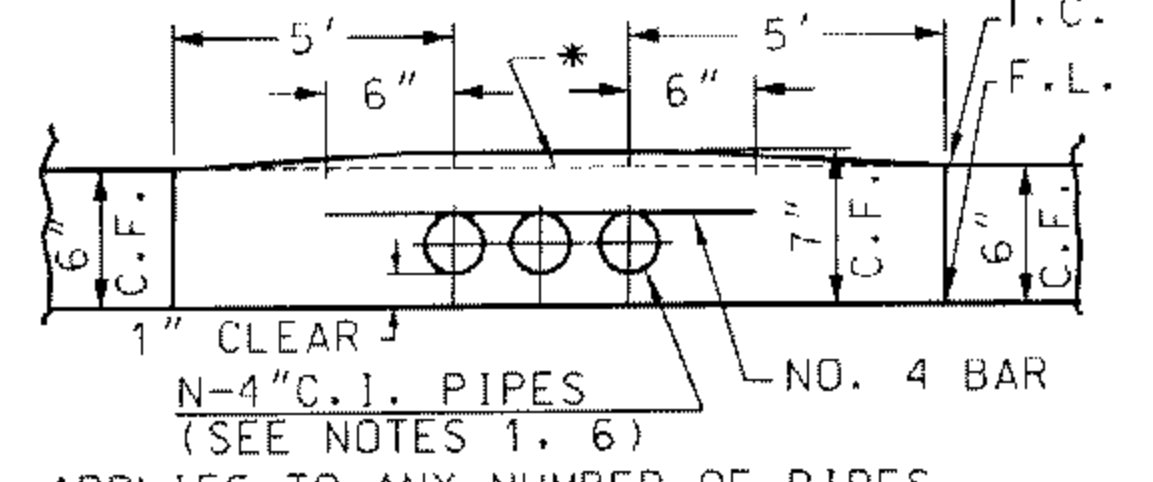


CASE III INLET GRADED DITCH SECTION



NOTE: APPLIES TO ANY NUMBER OF PIPES

CURB PROFILE 8" NORMAL CURB FACE



NOTE: APPLIES TO ANY NUMBER OF PIPES

CURB PROFILE 6" NORMAL CURB FACE

\* NORMAL T.C. GRADE LINE AS SHOWN ON PROFILE

APPROVED: *Greg Alway* DATE: 1-3-00  
CITY ENGINEER

CITY OF SANTA ANA  
PUBLIC WORKS AGENCY



DATE	REVISION

PARKWAY CULVERT TYPE 'B'

STD. PLAN NO. 319