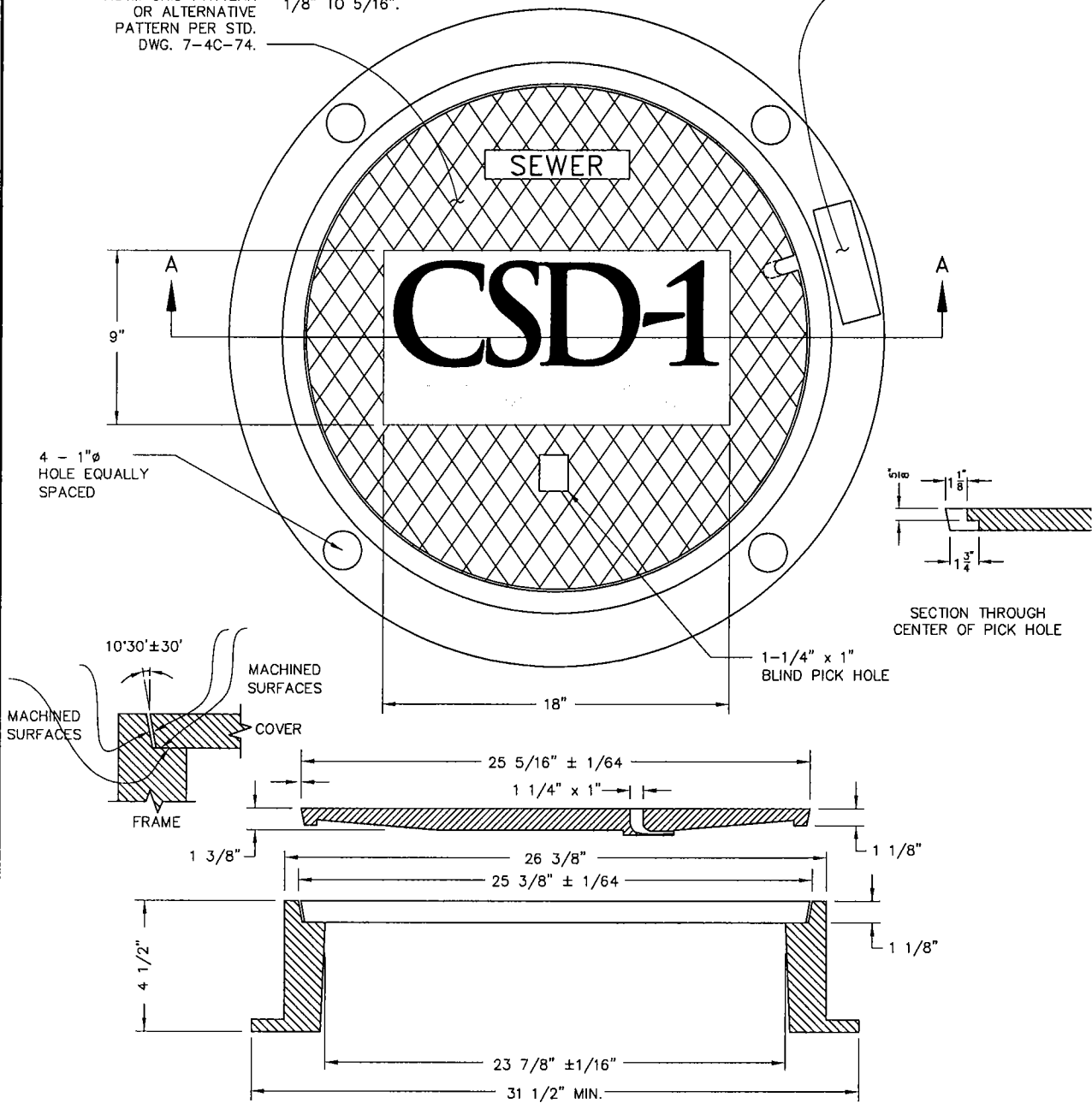


SUPPLIERS TO SUBMIT SAMPLE FOR APPROVAL. LETTERS AND RIBBON TO BE SHARP AND CLEAR AND BE THE SAME ELEVATION AS THE CROSS-HATCHED SURFACE AREA WITH THE BACKGROUND RECESSED 1/8" TO 5/16".

ASTM GRID PATTERN OR ALTERNATIVE PATTERN PER STD. DWG. 7-4C-74.

MANUFACTURER



SECTION A-A

NOTES:

- ALL CASTINGS TO CONFORM TO ASTM A48, CLASS 35B
- FRAME AND COVER TO MEET H-20 LOAD SPECIFICATIONS. WEIGHT AND LOAD SPECIFICATIONS TO BE SUBMITTED BY MANUFACTURER.
- MACHINED HORIZONTAL AND VERTICAL BEARING SURFACES NOT TO EXCEED 1/64" TOLERANCE.
- FRAME AND COVER SHALL HAVE A COATING OF BITUMINOUS MATERIAL.
- EQUIVALENT DUCTILE IRON FRAME AND COVERS MAY BE USED. SEE STD. DWG. 7-4C-74.
- LOCKING COVER TYPE FRAME AND COVERS SHALL BE USED IN EASEMENT AREAS UNLESS OTHERWISE APPROVED.
- THE OPENING, WITHOUT BEING EXCESSIVELY LARGE, MUST BE OF SUFFICIENT SIZE AS TO READILY ALLOW A 1/4" O.D. FLEX-TUBE TO PASS THROUGH THE LID.

ITEM APPROX. WT. (LBS)

COVER	130 ± 5
-------	---------

SACRAMENTO COUNTY
MUNICIPAL SERVICES AGENCY

GREY IRON
STANDARD 24" MANHOLE
FRAME & COVER

DRAWN BY: RAS
SCALE: NONE
DATE: 11/07

7-4C-72

Mary C. Snyder
DIRECTOR