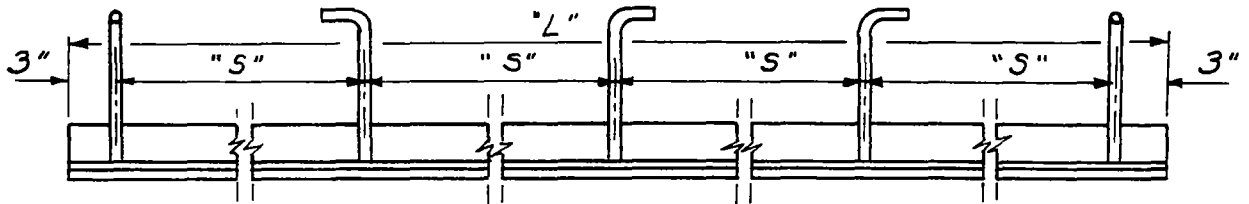


PLAN

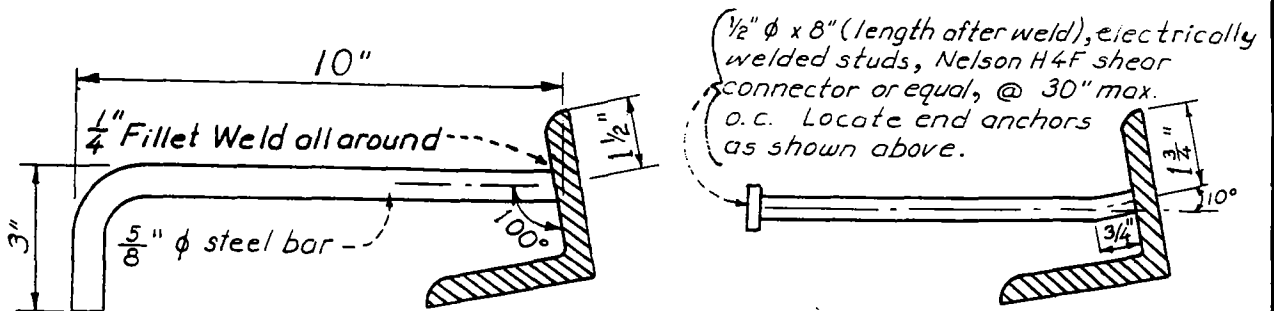
LOCATION OF ANCHORS ON 4'-6" x 3 1/2" x 3 1/2" x 1/2" ANGLE



PLAN

"L"	No. of Anchors	"S"
8'-0"	3	3'-9"
15'-0"	5	3'-7 1/2"
22'-0"	7	3'-7"
29'-0"	9	3'-6 3/4"

LOCATION OF ANCHORS ON 3 1/2" x 3 1/2" x 1/2" ANGLES OVER 4'-6" IN LENGTH



DETAIL OF ANCHOR

ALTERNATE ANCHORAGE *

NOTES

1. All angles shall be galvanized.
2. * If alternate anchorage is used, number of anchors indicate hereon shall be increased accordingly.

Rev. No.	Revised Standard No.	Approved	Date
		<i>[Signature]</i>	<i>[Date]</i>

CITY OF SAN BERNARDINO
PUBLIC WORKS DEPARTMENT
DETAIL OF ANGLE & ANCHOR
FOR CATCH BASINS

APPROVED
_____ 1972
[Signature]
CITY ENGINEER

STANDARD
NO.
409