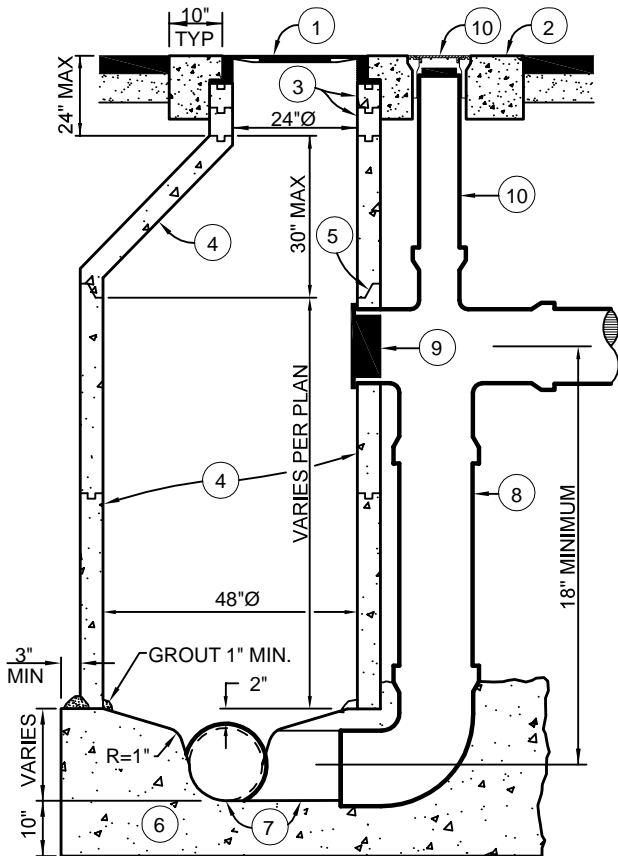


Revisions

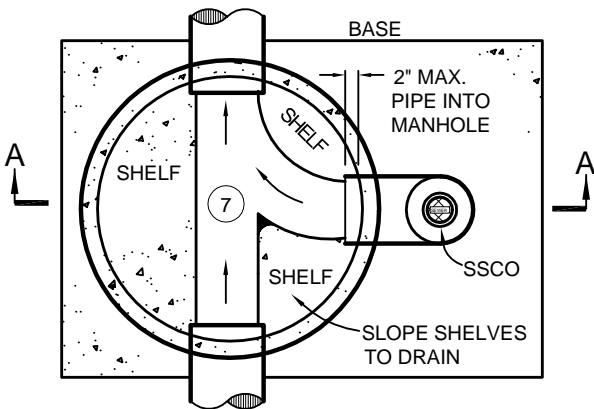
Description	Approved	Date	Description	Approved	Date

NOTES:

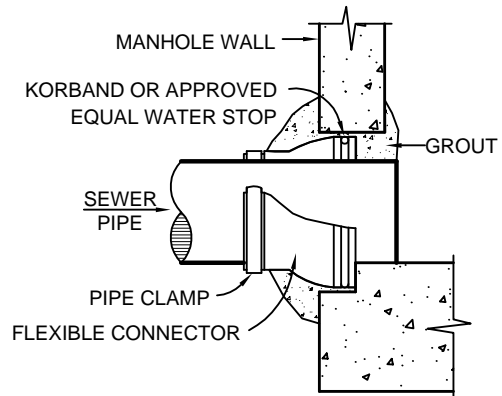
1. MANHOLE COVER AND FRAME SHALL HAVE A MINIMUM 24" Ø OPENING AND CONFORM TO HS-20 TRAFFIC LOADING. LID SHALL HAVE A BLIND PICKHOLE, WATER TIGHT GASKET, AND BE LETTERED "SANITARY SEWER".
2. COLLAR SHALL BE CLASS A PORTLAND CEMENT CONCRETE, TROWELLED TO STREET GRADE, AND ALLOWED TO CURE 48 HOURS PRIOR TO FULL TRAFFIC USE.
3. PROVIDE 3" OR 6" (9" MAX) ADJUSTING RINGS AS NEEDED, GROUTED ON THE INSIDE.
4. PRECAST SHAFT(S) AND ECCENTRIC CONE SHALL MEET ASTM C-478 61T FOR CLASS 2 REINFORCED CONCRETE PIPE, OR AS APPROVED BY THE DEPARTMENT.
5. JOINTS SHALL BE WATERTIGHT, SET WITH BUTYL RUBBER SEALANT (RUB'R-NEK OR EQUAL).
6. MANHOLE BASE SHALL BE PORTLAND CEMENT CONCRETE PER DESIGN STANDARDS, AND REST UPON UNDISTURBED MATERIAL. BOTTOM SHAFT SHALL BE WET-SET OR SET IN FORMED GROOVE. PRECAST BASES MAY BE USED WITH PRIOR APPROVAL OF THE DEPARTMENT AND SHALL MEET ASTM C-478 61T.
7. CONCRETE CHANNEL SHALL BE STEEL TROWEL FINISH AND SHELF AREAS SHALL BE MONOLITHICALLY PLACED.
8. LATERAL CONNECTION OVER 5' TO BE P.V.C. FOR DROP TEE, PIPE, AND 90° BEND.
9. INSTALL REMOVABLE PLUG.
10. SEWER CLEANOUT BOX PER STANDARD DRAWING S-2.
11. UNDER NO CIRCUMSTANCES SHALL UTILITY LIDS AND CONCRETE COLLARS BE LOCATED WITHIN CURBS, GUTTERS, SIDEWALKS, DRIVEWAY APRONS, CURB RAMPS, OR CROSS GUTTERS.



SECTION A-A



PLAN VIEW



TYPICAL CONNECTION DETAIL



PINKERTON A-640 WITH SKID RESISTANT SURFACE, BLIND PICKHOLE, WATER TIGHT GASKET, AND HS-20 TRAFFIC LOADING, OR APPROVED EQUAL, MARKED "SANITARY SEWER"

LID DETAIL



SAN LUIS OBISPO COUNTY DEPARTMENT OF PUBLIC WORKS

SEWER DROP MANHOLE

Scale:	Issued:
NTS	Aug. 2006
Drawing No:	S-1a
Sheet No:	