

Details shown for barrier anchorage to Type 732A. Anchorage for barrier Types 732 and 732A are similar to their respective details.

SECTION A-A

SECTION B-B

SECTION C-C

SECTION D-D

SECTION E-E

SECTION F-F

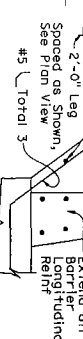
CONCRETE BARRIER TYPE 732

STATE OF CALIFORNIA
DEPARTMENT OF TRANSPORTATION

NO SCALE

B11-55

PEDESTAL ELEVATION



Extend all barrier longitudinal rebar to vertical face of pedestal.

Extend all barrier longitudinal rebar to vertical face of pedestal.

Extend all barrier longitudinal rebar to vertical face of pedestal.

Extend all barrier longitudinal rebar to vertical face of pedestal.

Extend all barrier longitudinal rebar to vertical face of pedestal.

Extend all barrier longitudinal rebar to vertical face of pedestal.

Extend all barrier longitudinal rebar to vertical face of pedestal.

Extend all barrier longitudinal rebar to vertical face of pedestal.

Extend all barrier longitudinal rebar to vertical face of pedestal.

Extend all barrier longitudinal rebar to vertical face of pedestal.

Extend all barrier longitudinal rebar to vertical face of pedestal.

Extend all barrier longitudinal rebar to vertical face of pedestal.

Extend all barrier longitudinal rebar to vertical face of pedestal.

Extend all barrier longitudinal rebar to vertical face of pedestal.

Extend all barrier longitudinal rebar to vertical face of pedestal.

Extend all barrier longitudinal rebar to vertical face of pedestal.

Extend all barrier longitudinal rebar to vertical face of pedestal.

Extend all barrier longitudinal rebar to vertical face of pedestal.

Extend all barrier longitudinal rebar to vertical face of pedestal.

Extend all barrier longitudinal rebar to vertical face of pedestal.

Extend all barrier longitudinal rebar to vertical face of pedestal.

Extend all barrier longitudinal rebar to vertical face of pedestal.

Extend all barrier longitudinal rebar to vertical face of pedestal.

Extend all barrier longitudinal rebar to vertical face of pedestal.

Extend all barrier longitudinal rebar to vertical face of pedestal.

Extend all barrier longitudinal rebar to vertical face of pedestal.

Extend all barrier longitudinal rebar to vertical face of pedestal.

Extend all barrier longitudinal rebar to vertical face of pedestal.

Extend all barrier longitudinal rebar to vertical face of pedestal.

Extend all barrier longitudinal rebar to vertical face of pedestal.

Extend all barrier longitudinal rebar to vertical face of pedestal.

Extend all barrier longitudinal rebar to vertical face of pedestal.

Extend all barrier longitudinal rebar to vertical face of pedestal.

Extend all barrier longitudinal rebar to vertical face of pedestal.

Extend all barrier longitudinal rebar to vertical face of pedestal.

Extend all barrier longitudinal rebar to vertical face of pedestal.

Extend all barrier longitudinal rebar to vertical face of pedestal.

Extend all barrier longitudinal rebar to vertical face of pedestal.

Extend all barrier longitudinal rebar to vertical face of pedestal.

Extend all barrier longitudinal rebar to vertical face of pedestal.

0151	COUNTY	ROUTE	POST MILES	SHEET TOTAL
			TOTAL PROJECT	NO. SHEETS
REGISTERED CIVIL ENGINEER REGISTERED PROFESSIONAL ENGINEER JILL SANK No. 023128 State of California License No. 023128 License Expires 12/31/2008				
MAY 1, 2006 The State of California or its officers or agents shall not be responsible for the accuracy or completeness of the drawings or specifications unless the project engineer or architect certifies to the contrary.				
To get to the office web site go to http://www.dot.ca.gov				