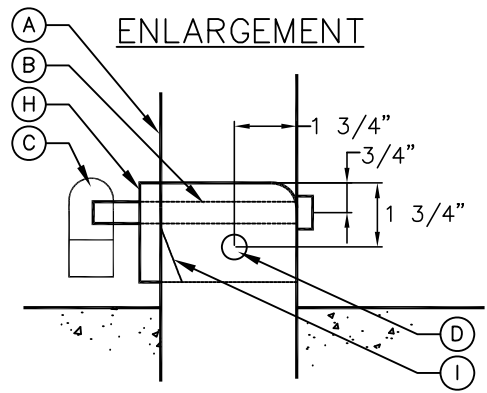


LEGEND


- A. 3 1/2" O.D. 1/4" WALL STEEL PIPE WITH CAP WELDED ON TOP, 7/8" HOLES FOR LOCKING PIN AND 3/4" HOLES FOR SWIVEL ROD. EASE ALL EDGES OF STEEL POST.
- B. 3/4" DIA. x 5" LOCKING PIN WITH FLAT WASHER WELDED TO ONE END AND 3/8" HOLE DRILLED 1/4" FROM END OF PIN.
- C. CITY KEYED PADLOCK, TO BE PROVIDED BY PARKS DEPARTMENT.
- D. 5/8" DIA. STEEL SWIVEL ROD, WELD SWIVEL ROD TO SIDE PLATES.
- E. 3/8" x 16" x 4" STEEL BASE PLATE WITH 1" RADIUS CORNERS. EASE ALL EDGES.
- F. 3/8" STEEL BRACE. FILET WELD BOTH SIDES TO BASE PLATES.
- G. 1" RADIUS CORNERS, TYP.
- H. 4" X 4" x 3/8" STEEL BACK PLATE WELDED TO BASE PLATE.
- I. FISH MOUTH GRIND AT BOTTOM BACK CORNER OF POST.
- J. PLACE 2" WHITE REFLECTIVE TAPE.

NOTES

- 1. ALL PIPE SHALL BE BLACK STEEL PIPE.
- 2. ALL JOINTS SHALL BE WELDED IN ACCORDANCE WITH CA STATE STANDARD SPECIFICATIONS FOR WELDING STRUCTURAL STEEL AND GROUND SMOOTH.
- 3. ALL PARTS (EXCEPT PADLOCK) SHALL BE PAINTED WITH TWO COATS OF ZINC CHROMATE PRIMER AND TWO COATS OF EXTERIOR ENAMEL. COLOR: YELLOW PER CITY OF ROSEVILLE STANDARD.
- 4. BOLLARD SHALL BE INSTALLED SUCH THAT WHEN FOLDED, IT LAYS FLAT.




 ROB JENSEN
 DIRECTOR OF PUBLIC WORKS/CITY ENGINEER

	DEPARTMENT OF PUBLIC WORKS
BOLLARDS	
SCALE: NONE REVISED: JANUARY 17, 2007 DRAWN BY: C KRAFT APPROVED BY: R JENSEN	
ST-38	