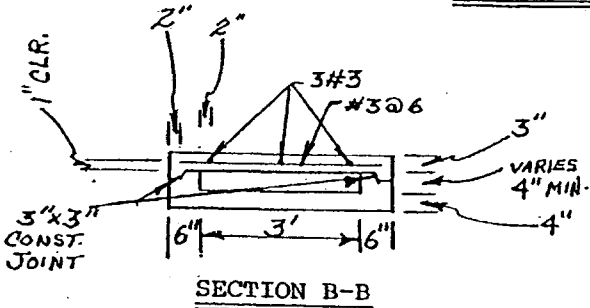
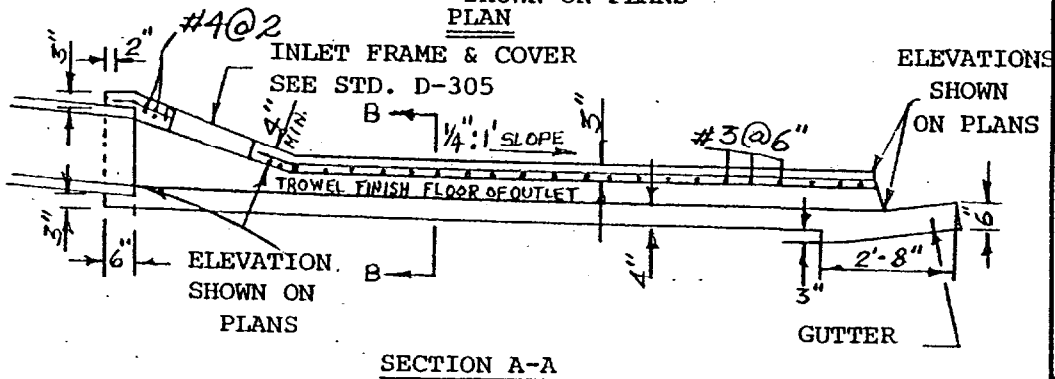
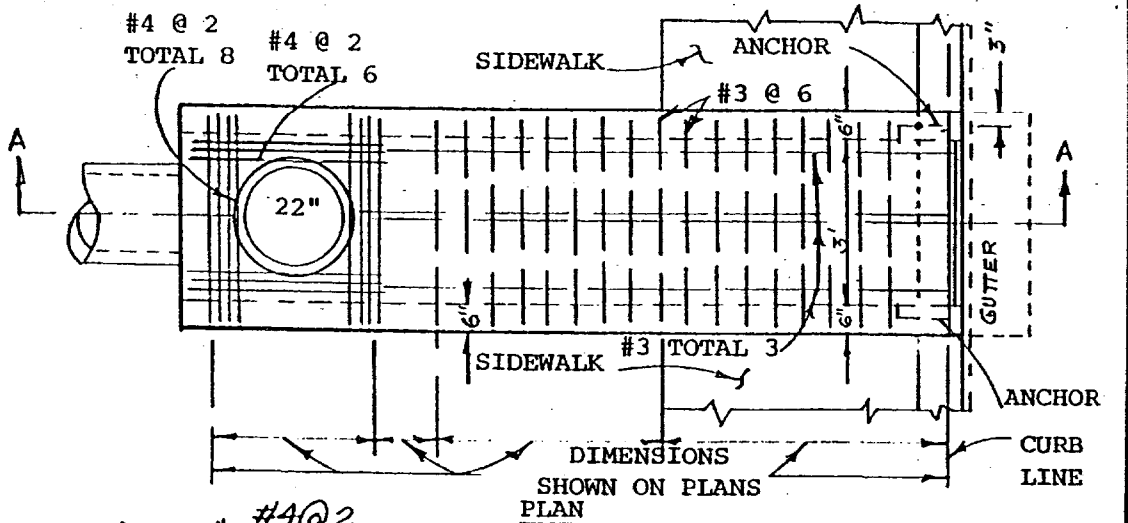


TROWEL FINISH TOP SURFACE AND
REPRODUCE MARKINGS OF EXISTING
SIDEWALK AND CURB



- NOTES: 1. ALL CONCRETE SHALL BE A SIX SACK MIX. Δ
2. SECTION TO BE SLOPED Laterally WITH TOP CONFORMING TO THE GRADES AT THE EXISTING SIDEWALK AND CURB.

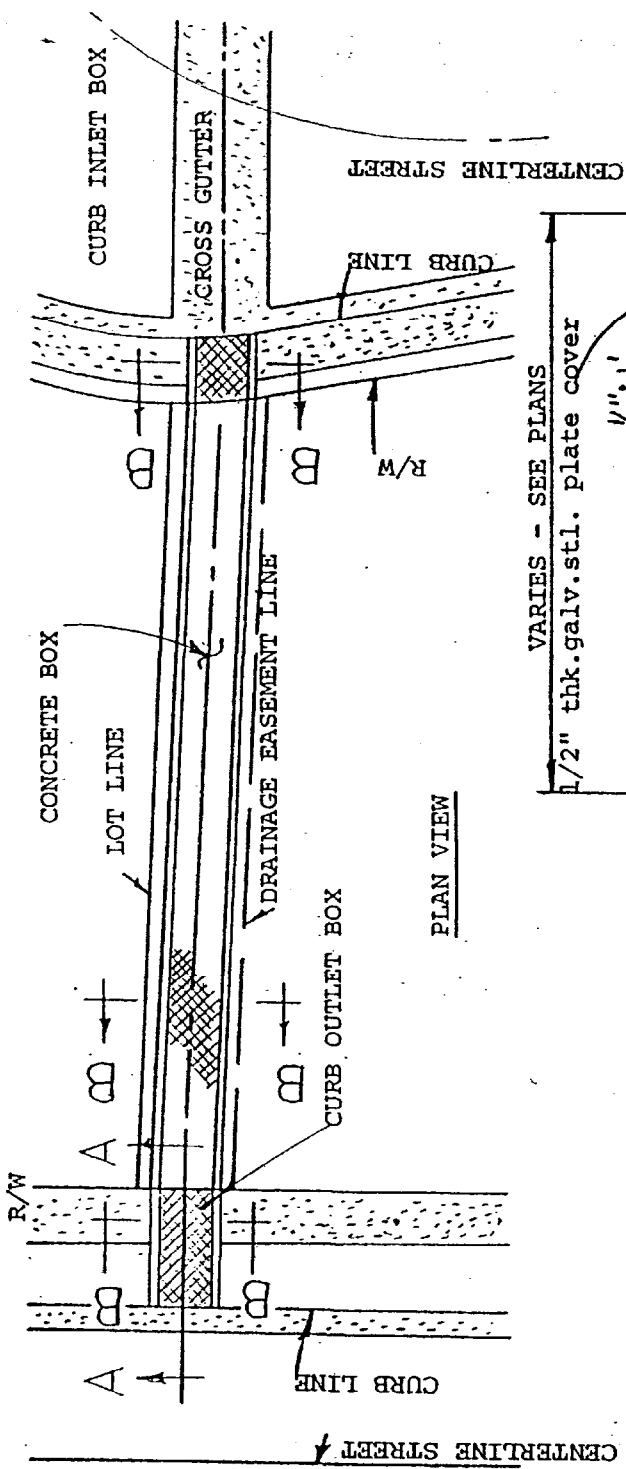
City of Hemet

CURB OUTLET
(WITH CONCRETE SLAB)

STANDARD No. D - 307

REVISIONS

Δ 10-86 S.W.	



VARIES - SEE PLANS

1/2" thk. galv. stl. plate cover

SLOPE 1/4" : 1'

FLOW (TROWEL FINISH)

1/4"

SECTION A-A

No. 4 bars - 6" C.C.

No. 4 bars - 12" C.C.

1/2" thk. galv. stl. plate cover

SECTION B-B

3/8" x 2" galv. stl. angle, anchor with 1/2" x 5" stl. anchor bolts

No. 4 bar

No. 4 spacer bar

No. 4 bar - 18" C.C.

No. 4 bars - 6" C.C.

No. 4 bars - 12" C.C.

6' 8"

6' 4"

6' 0" max.

2"

4"

VARIES

4"

4"

5 1/2 sack mix concrete.

Compacted subgrade

REVISIONS	
Δ 10-86 SW	

City of Hemet	
SIDEWALK DRAINAGE OUTLET THROUGH CURB	
Sheet 1 of 2	
STANDARD No. D - 308	