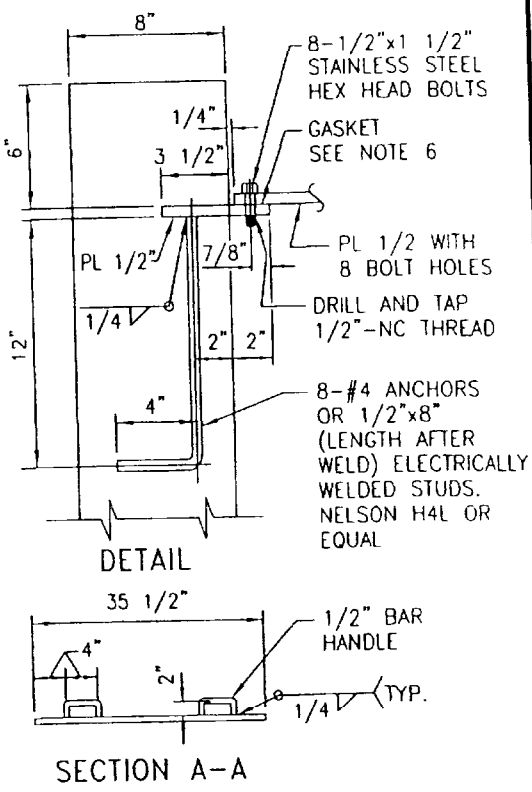
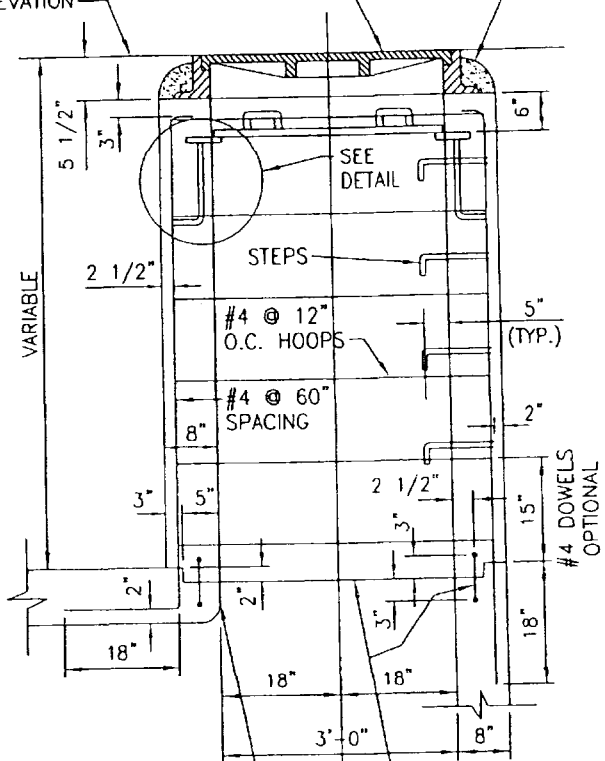


MANHOLE FRAME AND COVER
PER STANDARD PLAN 3023

COLLAR, CLASS C MORTAR

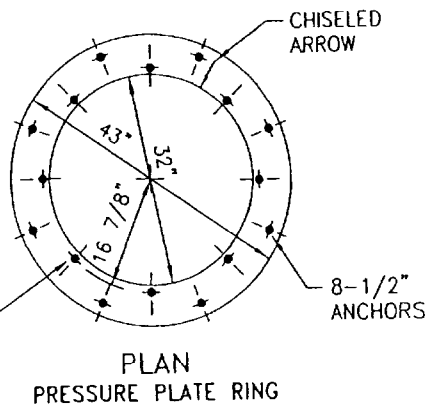
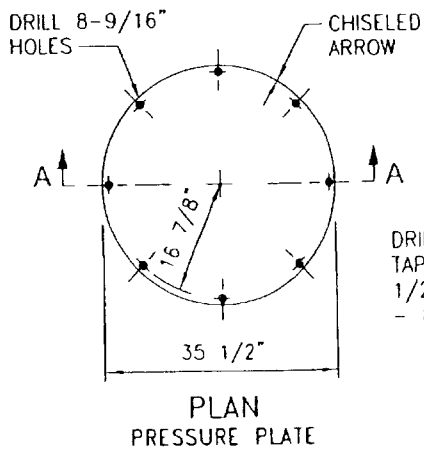
SURFACE
ELEVATION



MANHOLE OR STORM
DRAIN CONDUIT

PROVIDE CONSTRUCTION JOINT WITH
CONTINUOUS WATERSTOP WHEN MANHOLE
SHAFT IS NOT POURED MONOLITHIC WITH
MANHOLE OR STORM DRAIN CONDUIT

VERTICAL SECTION OF SPECIAL
PRESSURE MANHOLE SHAFT



NOT TO SCALE



APPROVED BY:

Ricardo Sandoval 10.18.06
CITY ENGINEER DATE

RICARDO SANDOVAL

REVIEWED BY: *RS*

DATE OF LAST REVISION: _____

CITY OF FONTANA

PRESSURE MANHOLE SHAFT
AND PRESSURE PLATE DETAIL
36" WITHOUT REDUCER

07/10/06

STD. PLAN NO. 3017

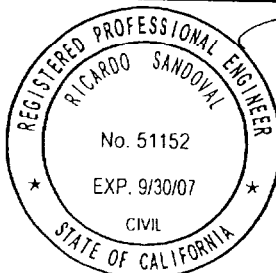
SHT 1 OF 2

NOTES

1. THIS STRUCTURE MAY BE USED FOR HYDROSTATIC HEADS UP TO 25' ABOVE THE PRESSURE PLATE.
2. 36" MANHOLE FRAME AND COVER PER STANDARD PLAN 3023 SHALL BE USED.
3. REINFORCEMENT SHALL BE PER ASTM A 615, GRADE 40 AND SHALL TERMINATE 1 1/2" CLEAR OF CONCRETE SURFACES UNLESS OTHERWISE SHOWN. HOOPS MAY BE ELECTRICALLY BUTT WELDED OR THE ENDS LAPPED 18".
4. THE MANHOLE SHAFT SHALL BE LOCATED ABOVE AND IN LINE WITH THE SIDE OF THE CONDUIT BELOW.
5. STEPS SHALL CONFORM TO STANDARD PLAN 3024. UNLESS OTHERWISE SHOWN, STEPS SHALL BE UNIFORMLY SPACED 14" TO 15" OC.
6. GASKET MATERIAL SHALL BE NEOPRENE (OR EQUAL) 1/16" THICK BY 1 1/4" WIDE.
7. BOLTS SHALL BE STAINLESS STEEL CONFORMING TO ASTM A 320, GRADE B8.
8. PRESSURE PLATE AND PRESSURE PLATE RING SHALL BE STEEL CONFORMING TO ASTM A 36 AND SHALL BE GALVANIZED. PLATES SHALL BE MARKED IN SETS AND A CHISELED ARROW STAMPED ON BOTH PLATES, AFTER DRILLING AND TAPPING, TO FACILITATE FIELD ASSEMBLY.
9. SEE CONTRACT SPECIFICATIONS FOR PHYSICAL REQUIREMENTS OF WATERSTOP.
10. DIMENSIONS SHOWN ON THIS PLAN ARE NOT EXACT EQUAL VALUES.

THE FOLLOWING STANDARD PLANS ARE INCORPORATED HEREIN:

- 3023 36" MANHOLE FRAME AND COVER
- 3024 STEEP STEP



APPROVED BY:

Ricardo Sandoval
 CITY ENGINEER DATE 10/18/06

RICARDO SANDOVAL

REVIEWED BY: *JS*

DATE OF LAST REVISION: _____

CITY OF FONTANA

PRESSURE MANHOLE SHAFT
 AND PRESSURE PLATE DETAIL
 36" WITHOUT REDUCER

07/10/06

STD. PLAN NO. 3017

SHT 2 OF 2