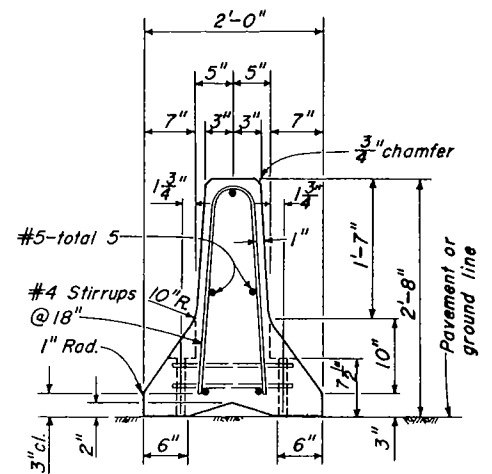
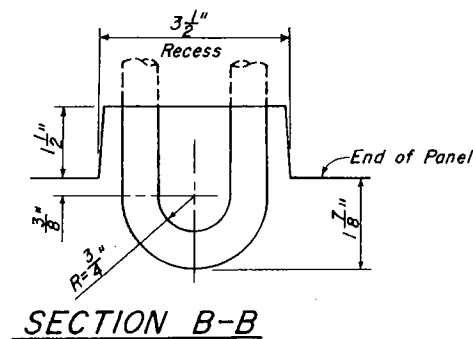


BOLT CONNECTION DETAIL



SECTION A-A



NOTES:

1. Where barrier railings are used for temporary traffic control the layout shall be approved by the Engineer, including end flares or use of terminal panels.
2. Where barrier railings are used as temporary channel invert cofferdams, the layout shall be in accordance with permit requirements or as approved by the Engineer.
3. If anchorage of the panels is called for by the plans or specifications they shall be anchored at the anchor bolt holes per details approved by the Engineer.
4. Alternate connection detail may be used as approved by the Engineer.

DRAWN BY: R. MCGOWAN, 11-78
CHECKED BY: C. CHING

LOS ANGELES COUNTY ROAD DEPARTMENT

TEMPORARY CONCRETE BARRIER RAILING

STANDARD PLAN

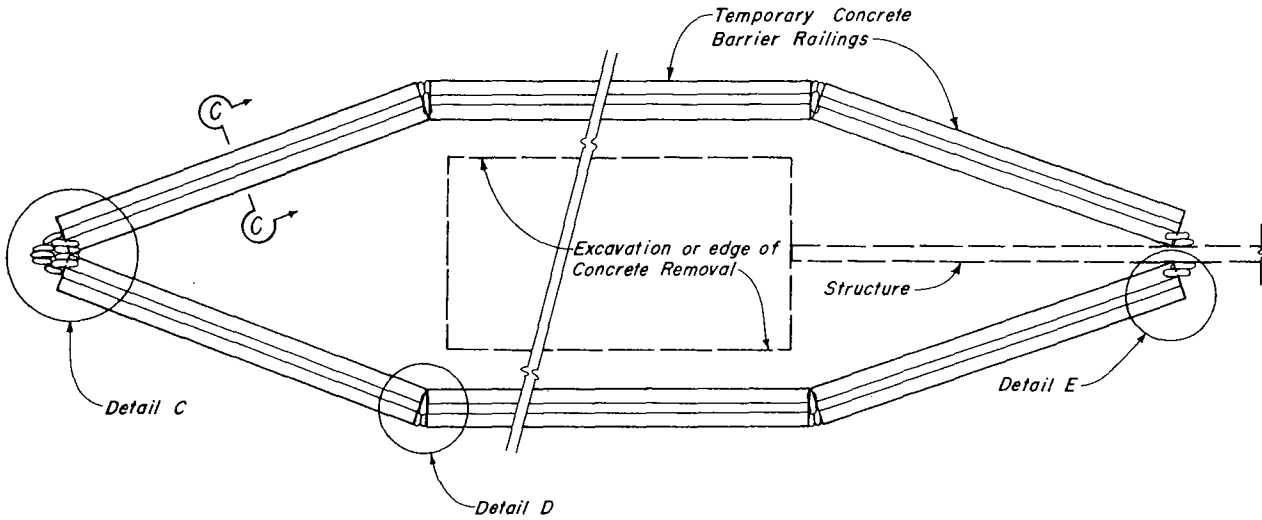
102-01

APPROVED _____

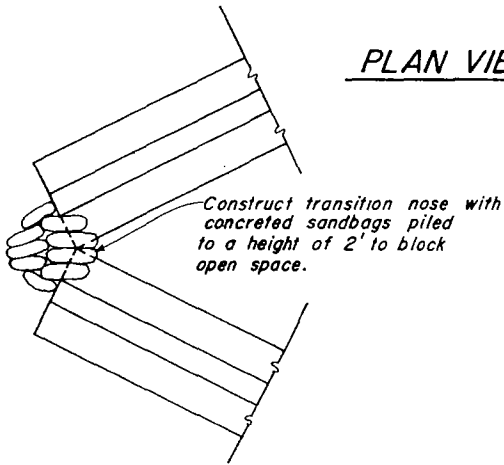
S. P. Benedict
ROAD COMMISSIONER

26 Jan 79
DATE

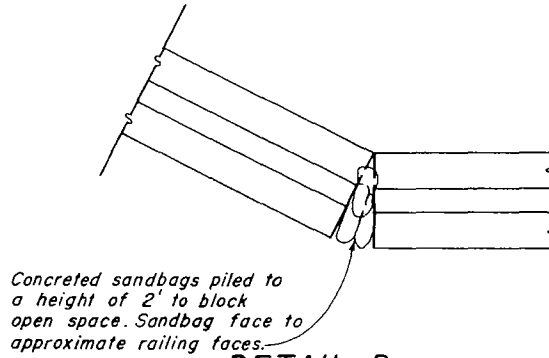
PAGE 1 OF 2



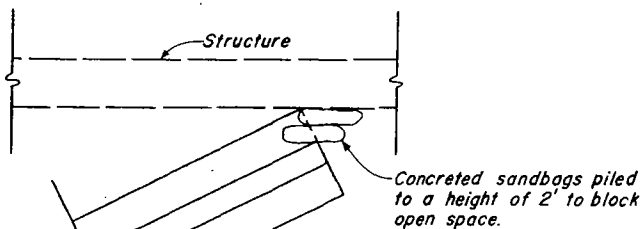
PLAN VIEW OF COFFERDAM



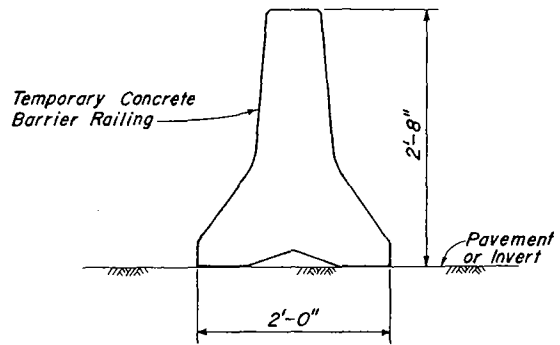
DETAIL C



DETAIL D



DETAIL E



SECTION C-C

BARRIER RAILING COFFERDAM

LOS ANGELES COUNTY ROAD DEPARTMENT

TEMPORARY CONCRETE BARRIER RAILING

STANDARD PLA

102-01

PAGE 2 OF 2

APPROVED _____

S.P. Benedict
ROAD COMMISSIONER

26 Jan 79
DATE

DRAWN BY: R. MCGOWAN
CHECKED BY: C. CHING