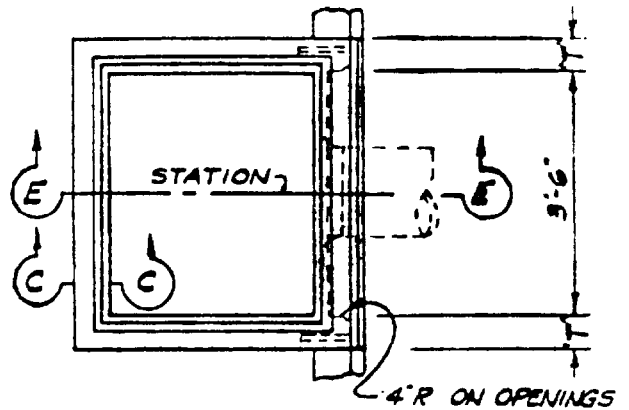
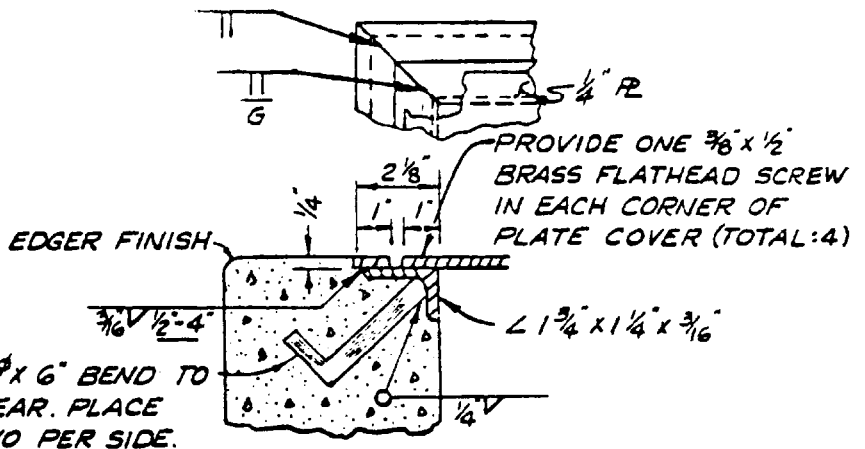


SECTION E-E



**PLAN
INLET TYPE OS**

WALL THICKNESS	
"H"	"T"
8'-0" OR LESS	6"
8'-1" TO 20'-0"	8"



SECTION C-C

UNLESS OTHERWISE SPECIFIED ON PLANS AND SPECIFICATIONS:

1. The usual inlet location at a street intersection is at the upstream end of the curb return and clear of the pedestrian crosswalk.
2. Stations of inlets, shown on the plans, apply at center of inlet.
3. Maximum grade intercept is three (3) percent.
4. Curb opening shall conform to curb alignment. See STD 202.
5. Curvature of the end walls at curb opening shall be formed and shall not be made by plastering.
- * 6. See STD 509 for miscellaneous details.
7. Outlet pipe shall be trimmed to the final shape and length before concrete is poured.
8. Concrete shall be Class A, per the California Division of Highways - Standard Specifications.
9. The flowline shall be hard, smooth troweled.
10. See STD 510 for inlet depressions.
11. See STD 206 for sidewalk.
12. Curb, inlet and outlet elevations shall be shown on the Improve. Plans

CITY OF BREA

STANDARD

CITY ENGINEER

INLET TYPE OS (Curb Opening, Small)

505

SIMILAR TO SPECIFICATIONS AS REFERENCED: THIS
 ORANGE CO NO. 501
 STATE OF CALIF 7-832.5 THIS

DATED:
 REV: