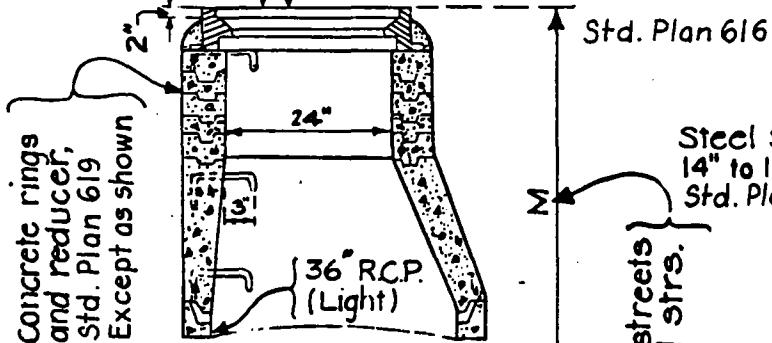


**PLAN**  
(Shaft not shown)

**DETAIL N PLAN**  
(Shaft not shown)  
See Note M

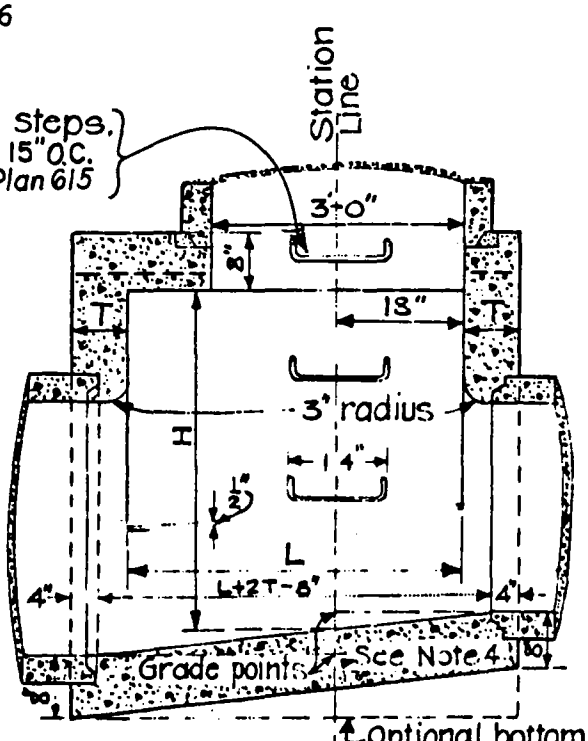
Street grade — Manhole frame and cover



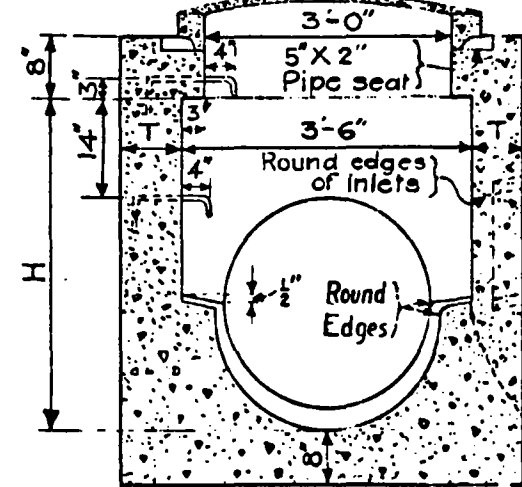
Concrete rings and reducers, Std. Plan 619 Except as shown

Steel steps, 14" to 15" O.C. Std. Plan 615

Minimum 2'-10 1/2" for paved streets  
Minimum 3'-6" for unpaved str. See Note M



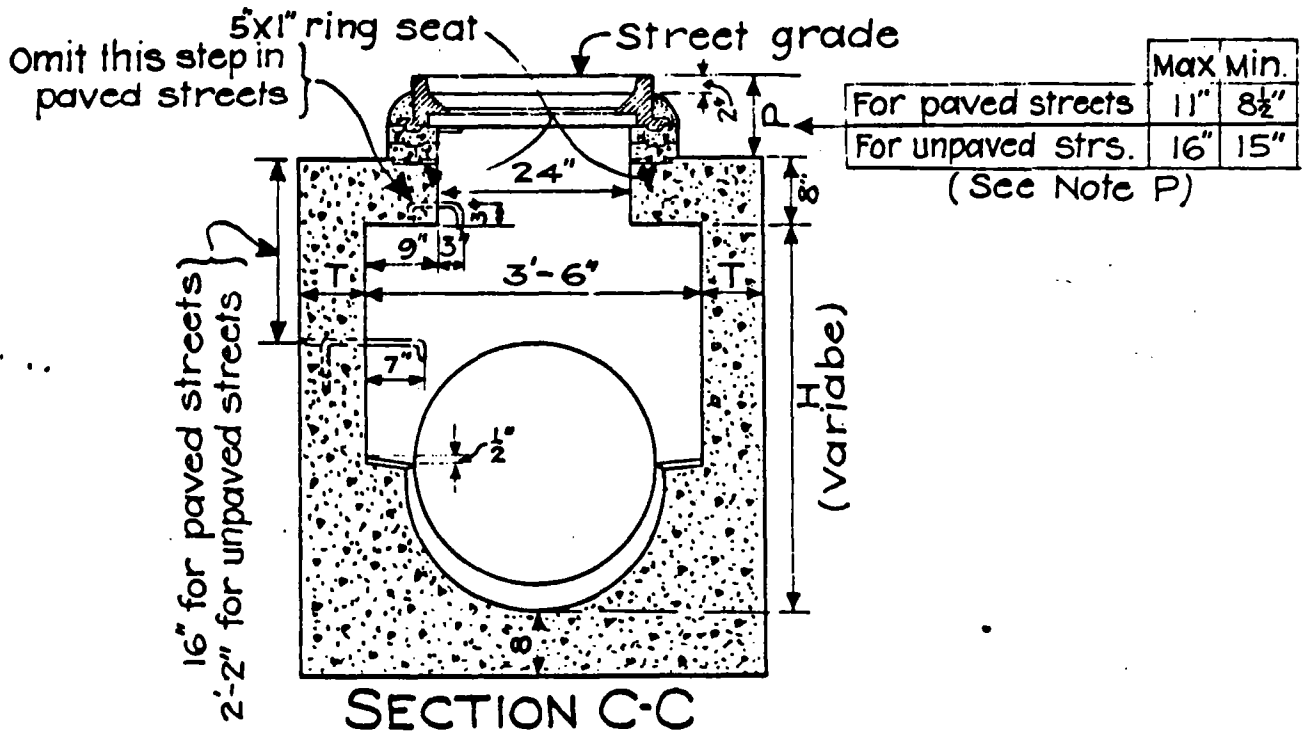
**SECTION B-B**



**SECTION A-A**

Inlet elevation applies at this point

REVISIONS		CITY OF LONG BEACH, CALIFORNIA DEPARTMENT OF PUBLIC WORKS	STANDARD PLAN NO.
NO.	DATE		
1		MANHOLE NO. 1 33" PIPE OR SMALLER	621
2			
3			
4			
APPROVED BY: <i>Edward J. [Signature]</i>		DATE: 6-26-89	SHEET
CITY ENGINEER R.E. No. 24233		EX. DATE 12-31-89	1 OF 2



**NOTES**

- H- HEIGHT H (in Sec. A-A and Sec. B-B) shall be not less than 4'-0", but may be increased provided that the value of M shall be not less than the minimum specified and that the reducer shall be used. For H (in Sec. C-C) see Note P.
- L- LENGTH L shall be 4 feet unless otherwise shown on plan. L may be increased or location of manhole shifted to meet pipe ends.
- M- SHAFT shall be constructed as per Sec. C-C and Detail N when depth M from street grade to top of box is less than 2'-10½" for paved streets or 3'-6" for unpaved streets.
- P- DEPTH P may be reduced to an absolute limit of 6" when larger values of P would reduce H (in Sec. C-C) to 3'-6" or less.
- T- T shall be 8" for values of H up to and including 8 feet.  
T shall be 10" for values of H over 8 feet.

1. Unless otherwise shown, steps shall be spaced 14" to 15" O.C. The lowest step shall be not more than 2 feet above the ledge at side of manhole floor.
2. Reinforcing bars shall be 1½" clear from face of concrete.
3. STATIONS of manholes shown on Plan apply at center line of shaft. Elevations are shown at shaft center and refer to the prolonged invert grade line. See Note L for shifting location.
4. FLOOR of manhole shall be steel-troweled.

REVISIONS		CITY OF LONG BEACH, CALIFORNIA DEPARTMENT OF PUBLIC WORKS	STANDARD PLAN NO.
NO.	DATE		
1		MANHOLE NO. 1 33" PIPE OR SMALLER	621
2			
3			
4			
APPROVED BY: <i>Edward J. Fritz</i>		DATE: <u>6-26-89</u>	SHEET
CITY ENGINEER R.E. No. <u>24233</u>		EX. DATE <u>12-31-89</u>	<u>2</u> OF <u>2</u>