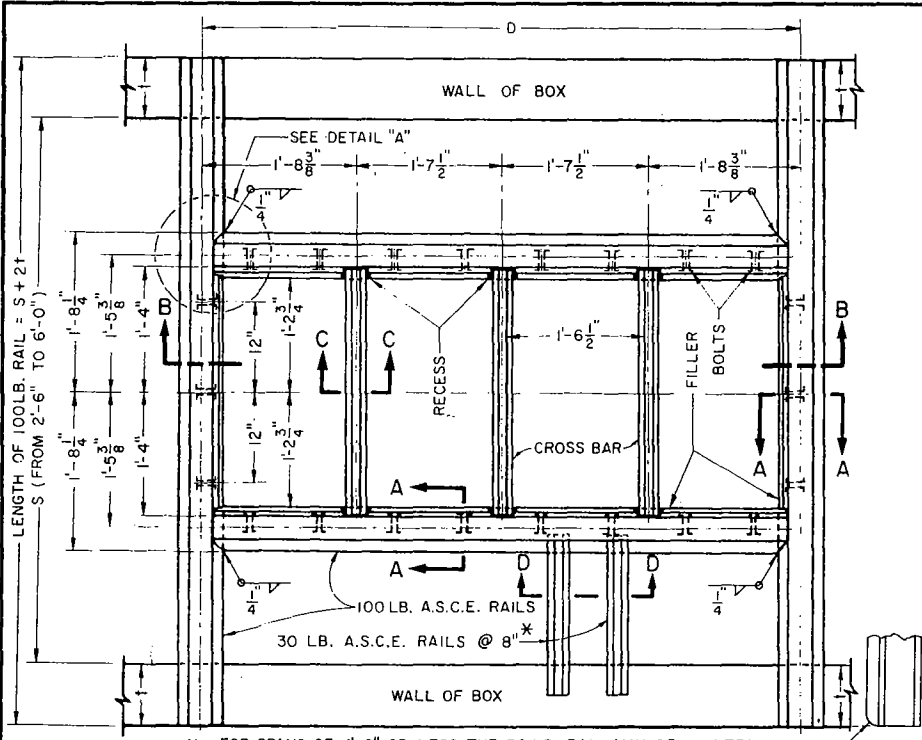
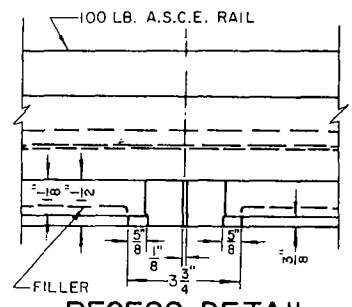


NO. OF COVERS	1	2	3	4
"D"	0'-2 1/4"	3'-4 3/4"	5'-1 1/4"	6'-7 3/4"

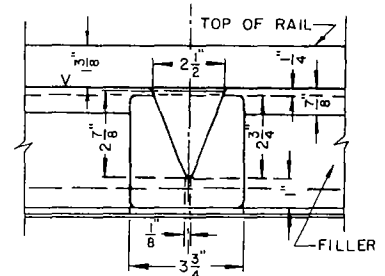


* FOR SPANS OF 4'-0" OR LESS THE 30 LB. RAIL MAY BE OMITTED.
 LENGTH OF 30 LB. RAIL = $\frac{1}{2}(L - 12\frac{1}{2})$.

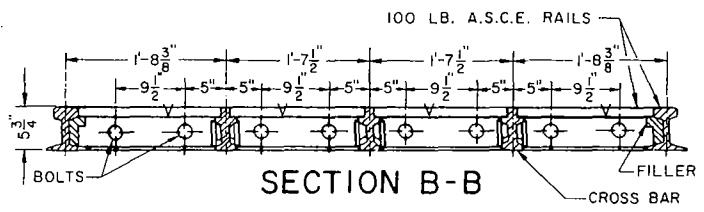
GENERAL PLAN



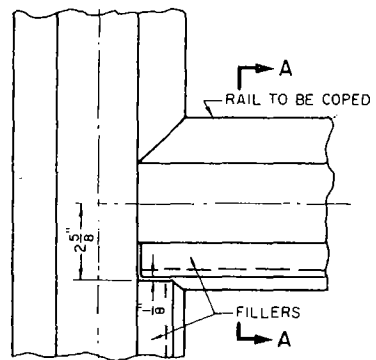
RECESS DETAIL PLAN



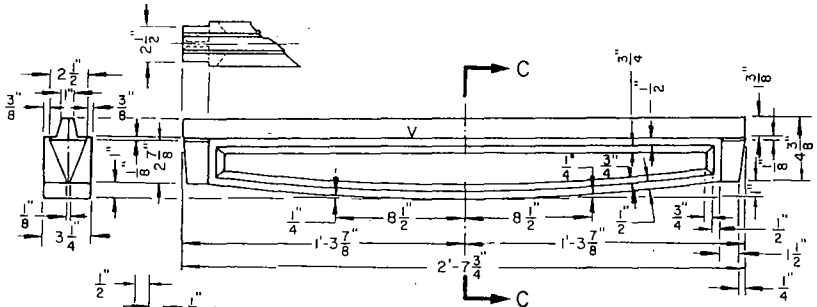
RECESS DETAIL ELEVATION



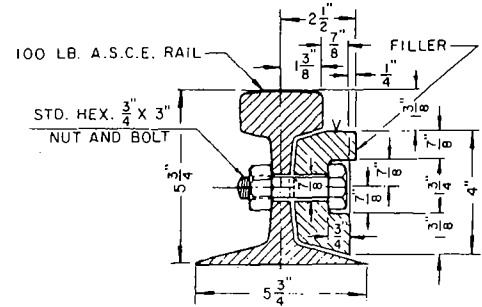
SECTION B-B



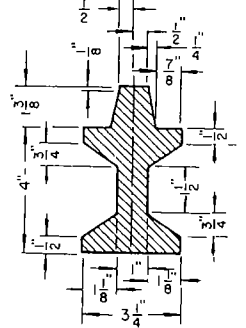
DETAIL A



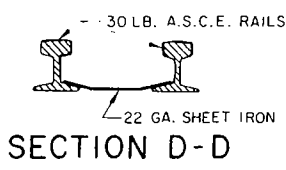
CROSS BAR DETAIL



SECTION A-A SHOWING DETAIL OF BOLT & FILLER



SECTION C-C



SECTION D-D

CHECKED BY: N.H. TEMPLIN, 3-29.

DRAWN BY: P.E. THOMPSON, 3-29.
 REV. 1-69: ADDED PAGE 2.

LOS ANGELES COUNTY ROAD DEPARTMENT

MANHOLE FRAME AND COVER NO. 4

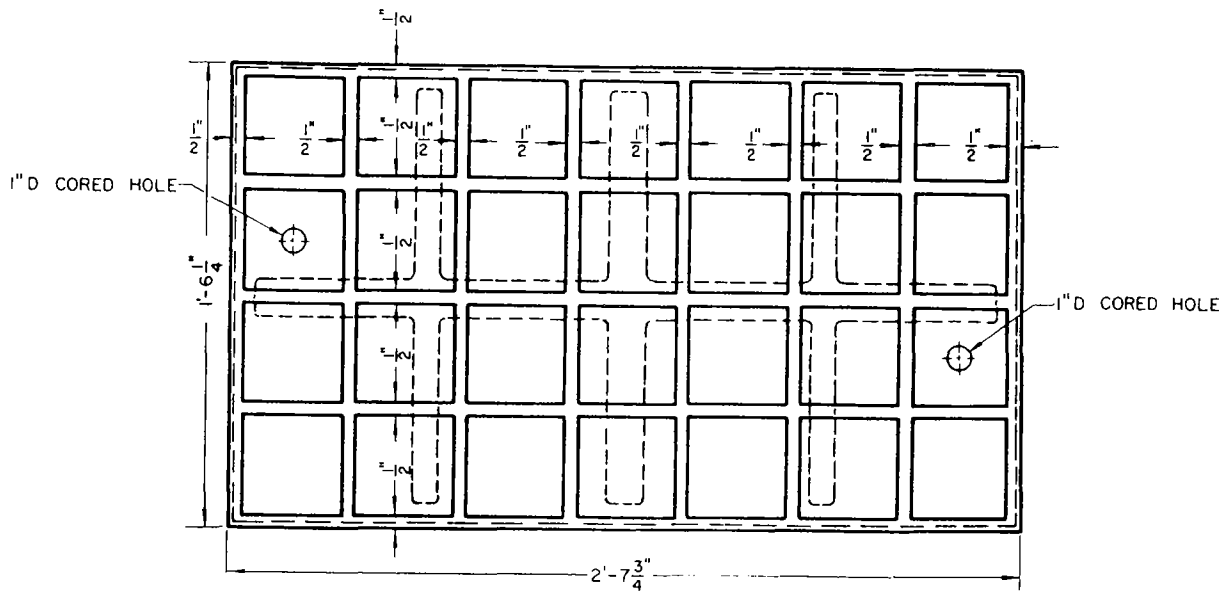
STANDARD PLAN
 74-04

APPROVED

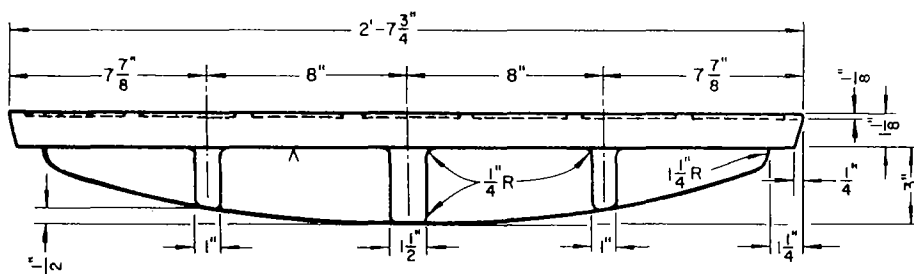
J. J. Mosher 15 Jan 69
 ROAD COMMISSIONER DATE

PAGE 1 OF 2

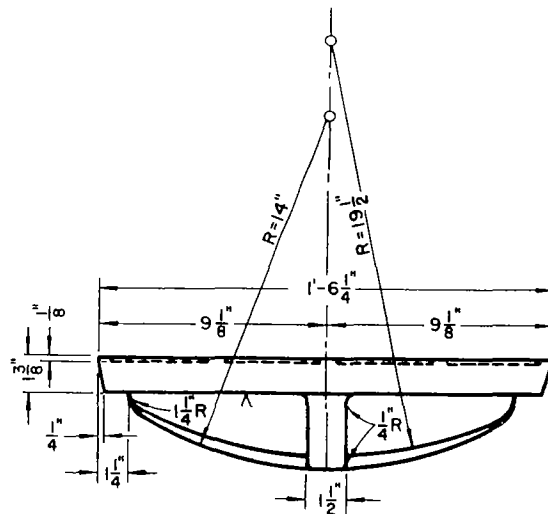
REVISED 1-69



PLAN



SIDE VIEW



END VIEW

NOTES:

1. COVER, CROSS BAR, AND FILLER SHALL BE CAST IRON.
2. USE (3) COVERS UNLESS OTHERWISE SPECIFIED.
WEIGHT OF (1) COVER = 255 LBS.
3. MANHOLE FRAME AND COVER FOR USE IN TRAFFIC AREAS.

DRAWN BY: P.E. THOMPSON, 3-29. CHECKED BY: N.H. TEMPLIN, 3-29.

LOS ANGELES COUNTY ROAD DEPARTMENT

MANHOLE FRAME AND COVER NO. 4

STANDARD PLAN

74-04

PAGE 2 OF 2