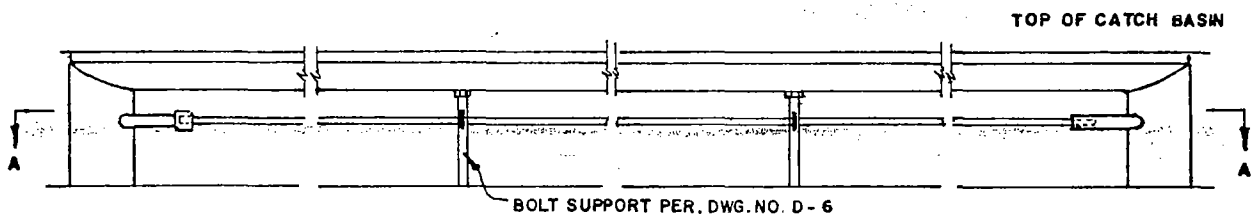
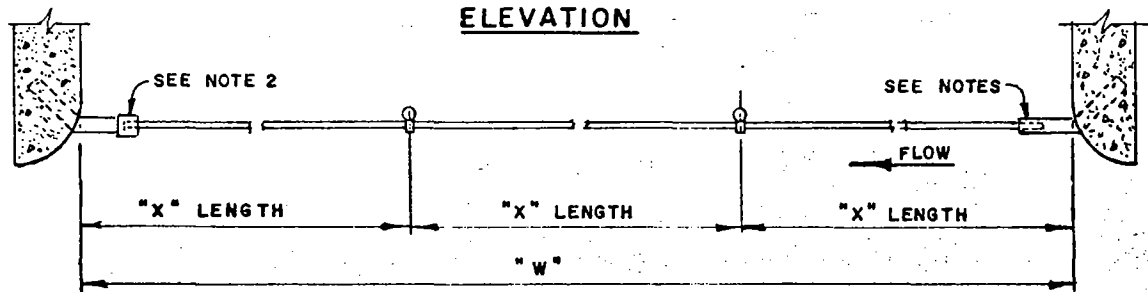


DETAIL OF ANCHOR

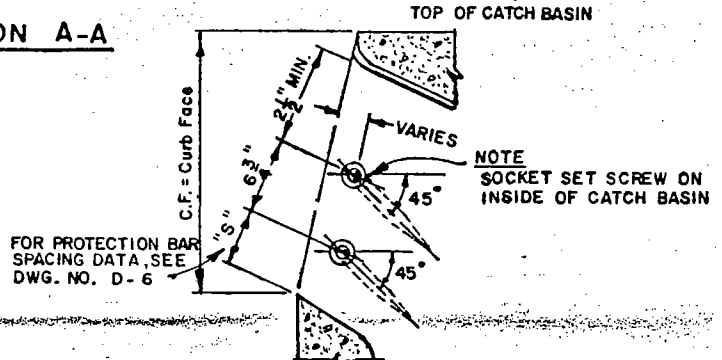


ELEVATION



SECTION A-A

"w" (Incl.)	Number of Support Bolts	Number of "x" Length
5' to 10'	1	2
10' to 15'	2	3
15' to 20'	3	4
20' to 25'	4	5
25' to 30'	5	6



SECTION SHOWING LOCATION OF ANCHOR AT WALL OF CATCH BASIN

NOTES

- ALL BARS SHALL BE 3/4" GALVANIZED, HOT-ROLLED STEEL PER. A.S.T.M. DESIGNATION A-36. BAR LENGTHS SHALL NOT EXCEED 21'-0", AND SHALL BE CUT TO FIT IN FIELD. WHEN "w" IS OVER 21'-0", PROTECTION BAR SHALL CONSIST OF TWO OR MORE SECTIONS DEPENDING UPON LENGTH OF BASIN. LOCATION OF SPECIAL SUPPORT BARS AND ADDITIONAL SOCKET SET SCREW SHALL BE DETERMINED BY THE ENGINEER IN THE FIELD.
- INSTALL COUPLING AT DOWNSTREAM END OF CATCH BASIN OPENING.

DATE 2-23-78	REMOVABLE PROTECTION BAR FOR CATCH BASINS	SCALE <u>NONE</u>
CITY ENGINEER	ENGINEERING DEPARTMENT CITY OF PALM DESERT	STD. DRAWING NO. D-7