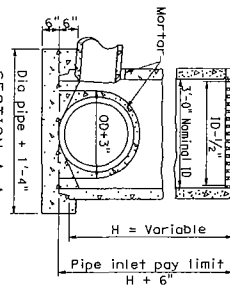
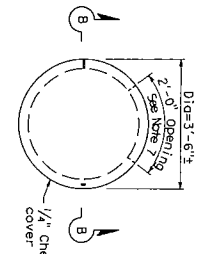


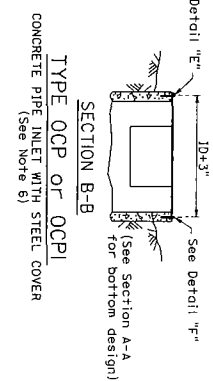
Cost 1" x 2 1/2" slot
In pipe to receive lug
Type 368 grate (see Notes 5 and 9)
Squarred end
H = Variable
Pipe inlet pay limit
H +



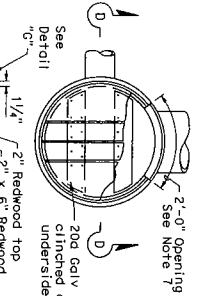
SECTION A-A
TYPE GCP
CONCRETE PIPE INLET WITH GRATE



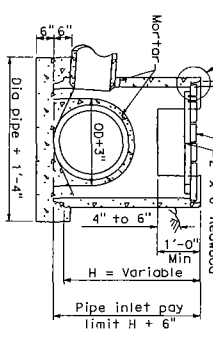
See Detail "E"
See Detail "F"
See Section A-A for bottom design



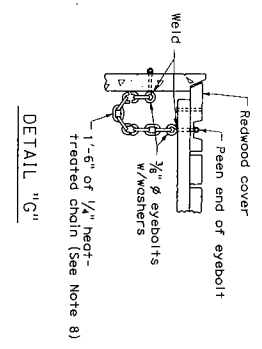
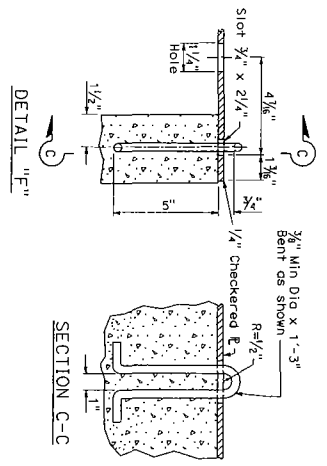
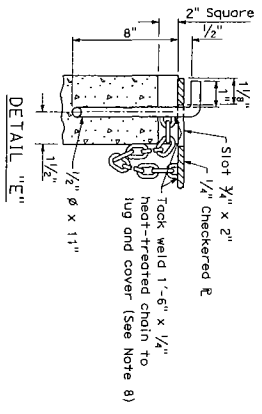
SECTION B-B
TYPE OCP or OCPI
CONCRETE PIPE INLET WITH STEEL COVER
(See Note 6)



See Detail "D"
2nd Gully rolls slanted on the underside



SECTION D-D
TYPE OCP or OCPI
CONCRETE PIPE INLET WITH REDWOOD COVER
(See Notes 6 and 10)



- NOTES:**
1. For details of steel pipe inlets, see Standard Plan D75A.
 2. For details of ladder and steps and when ladder or steps are required, see Standard Plan D75C.
 3. Inlet pipes shall not protrude into basin.
 4. Except for inlets used for junction boxes, basin floors shall have minimum slope of 4:1 from all directions toward outlet pipe, and a wood trowel finish.
 5. See Standard Plans D77A and D77B for Grate and Frame Details and Weights of Miscellaneous Iron and Steel.
 6. Designation of Type OCP pipe inlets on plans indicates trash racks are to be furnished and installed on all side openings. See Standard Plan D75C for Trash Rack details.
 7. More than one side opening may be required. Location and number as ordered by the Engineer. Opening may be cast in pipe.
 8. Chain to be provided when specified.
 9. Place pipe so bars of grate will be parallel with main surface flow.
 10. Redwood covers not to be used where there is a possibility of wheel loads.

DIST.	COUNTY	ROUTE	POST MILES TOTAL SHEETS	SHEET TOTAL NO. SHEETS
REGISTERED CIVIL ENGINEER May 1, 2006 PLANS APPROVAL DATE The State of California or its officers or employees are not responsible for consequences of selective copies of this plan when used for other purposes. To get the full plan visit the Web: http://www.dmv.ca.gov				
REGISTERED PROFESSIONAL ENGINEER Glenn Debra No. C34547 Exp. 8-30-07 CIVIL STATE OF CALIFORNIA				

CONCRETE PIPE INLETS

STATE OF CALIFORNIA
DEPARTMENT OF TRANSPORTATION

NO SCALE

D75B