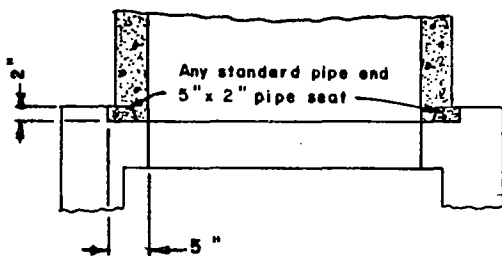
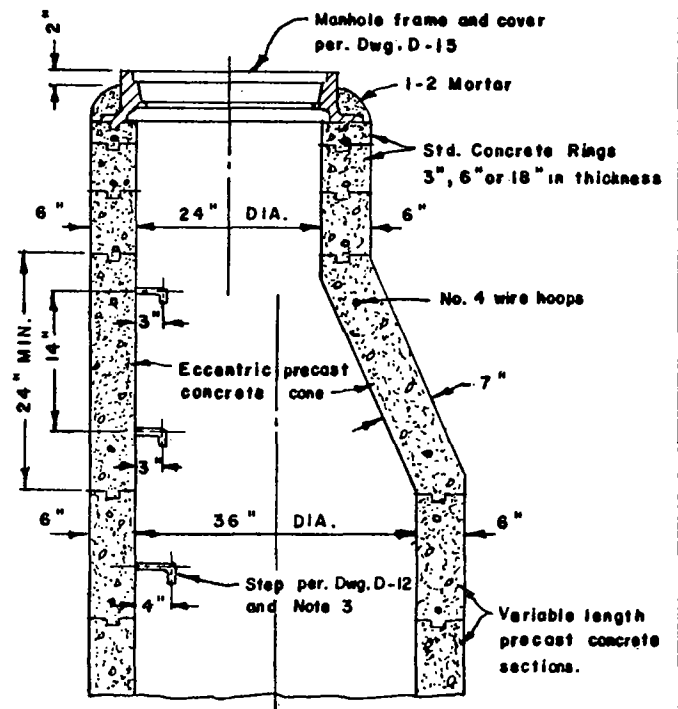


CROSS SECTION OF REINFORCED CONCRETE RING



VERTICAL SECTION OF REINFORCED CONCRETE ECCENTRIC MANHOLE SHAFT



VERTICAL SECTION OF PLAIN CONCRETE ECCENTRIC MANHOLE SHAFT

NOTES

1. ALL JOINTS SHALL BE FILLED WITH 1-2 MORTAR AND NEATLY PAINTED OR WIPED ON INSIDE.
2. COLLAR OF 1-2 MORTAR AROUND COVER FRAME SHALL BE OMITTED IN ROCK AND OIL STREETS AND PAVED STREETS.
3. STEPS SHALL BE 3/4" ROUND GALVANIZED STEEL. TOP STEP SHALL BE PLACED DIRECTLY BENEATH THE MANHOLE COVER FRAME. WIDTH OF ALL STEPS SHALL BE 14" BETWEEN LEG CENTERS. EXCEPT WHERE SHOWN OTHERWISE, SPACING OF STEPS IN SHAFT SHALL BE 14" ON CENTER.
4. ECCENTRIC MANHOLE SHAFT, REDUCER AND RINGS MAY BE PLAIN CONCRETE. FOR UNREINFORCED SECTIONS, THE MINIMUM THICKNESS SHALL BE 6". ALL CONCRETE SHALL BE 560 - C - 3250.
5. THE SURFACES OF CONES AND SHAFTS SHALL BE SMOOTH AND NEATLY FINISHED. CONES OR SHAFTS WITH IMPERFECT MOULDING OR HONEYCOMB SURFACES WILL NOT BE ACCEPTED.
6. THE PRECAST CONCRETE MANHOLE STRUCTURES WILL BE INSPECTED BY THE ENGINEER AND HE WILL INDICATE ACCEPTANCE BY MARKING THE STRUCTURES.

DATE 3 - 7 - 78	CONCRETE RINGS, REDUCER & PIPE FOR MANHOLE SHAFT	SCALE NONE
CITY ENGINEER	ENGINEERING DEPARTMENT CITY OF PALM DESERT	STD. DRAWING NO. D-14