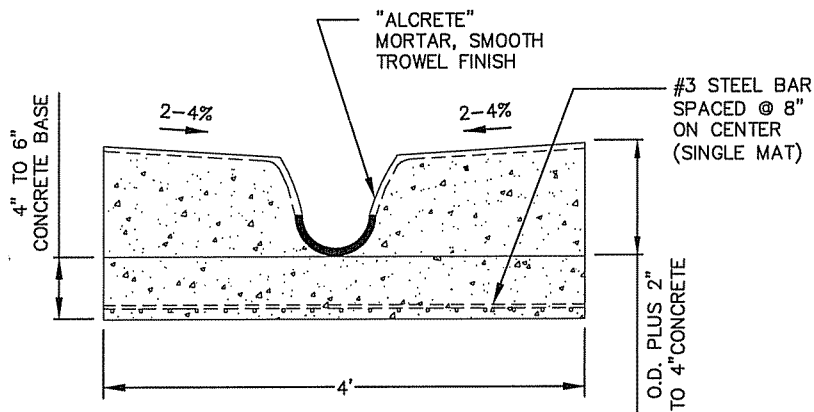
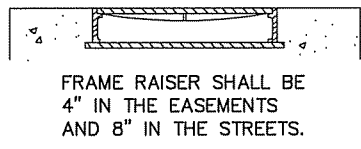
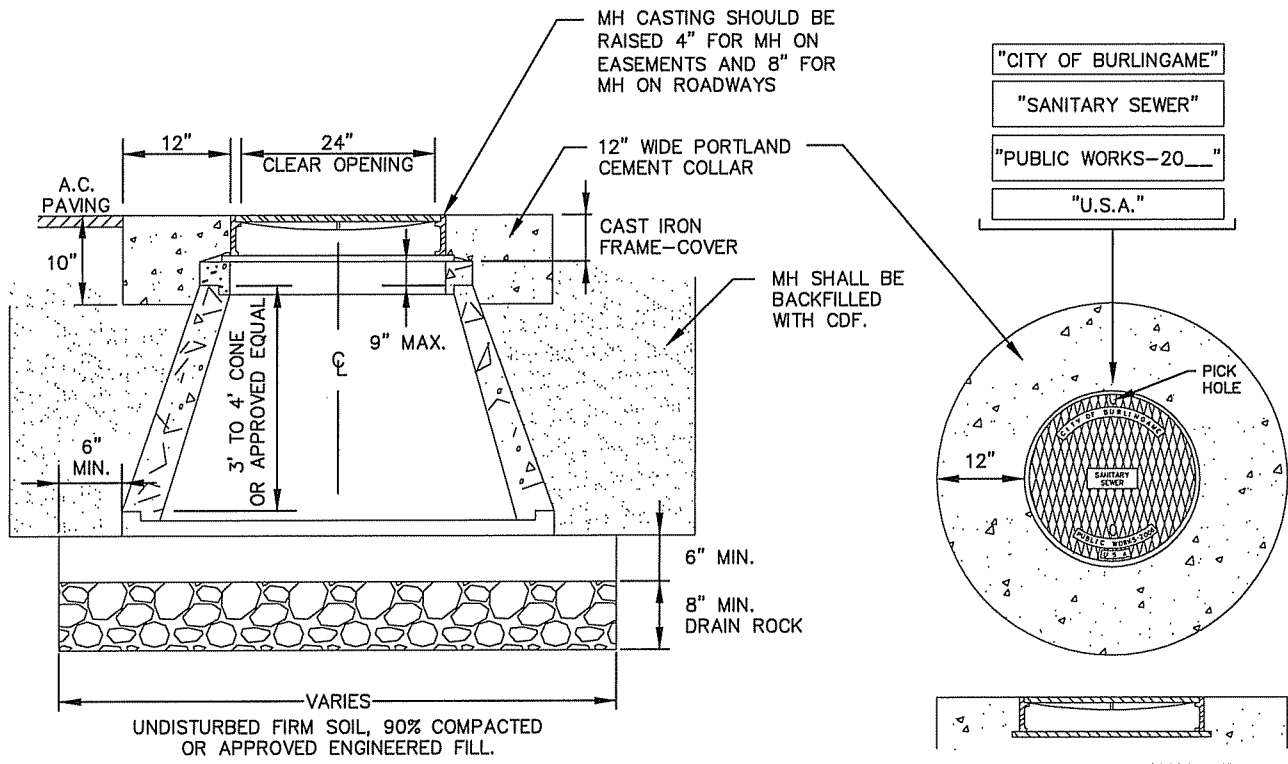


**STANDARD MANHOLE
(IN STREET RIGHT-OF-WAY)**
DEPARTMENT OF PUBLIC WORKS

APPROVED BY	DRAWING NO. SS-3 (1 of 4)
DATE 8/22/06	



**TYPE 2 MANHOLE DETAIL
(4' DEEP OR LESS)**

DEPARTMENT OF PUBLIC WORKS

APPROVED BY

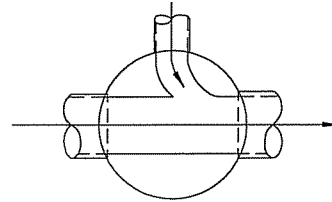
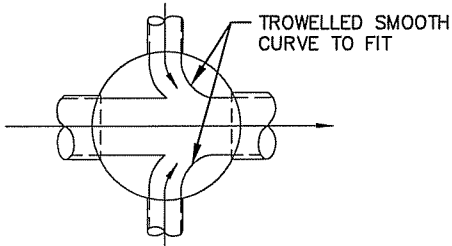
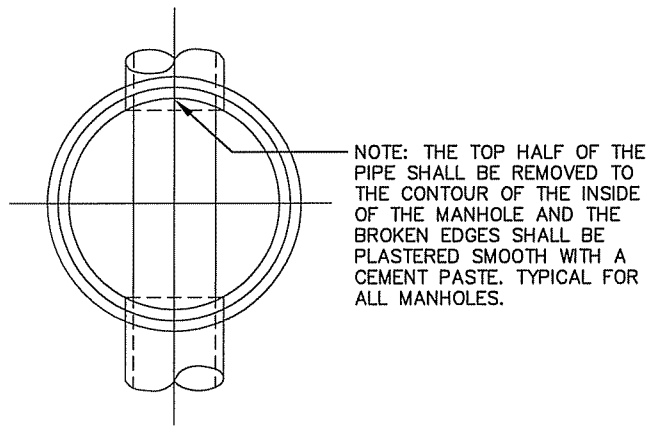
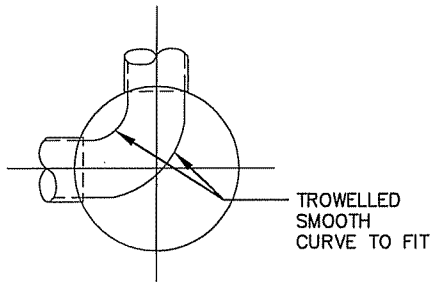
DATE

8/22/06

DRAWING NO.

SS-3

(2 of 4)



TYPICAL CHANNEL CONFIGURATION PLANS

* * * * *

REQUIREMENTS FOR CONSTRUCTION OF
SANITARY SEWERS MANHOLES

1. ALL JOINTS TO BE SEALED WATER TIGHT WITH CITY APPROVED FLEXIBLE WATER-TIGHT JOINT COMPOUND.
2. COVER PATTERN TO BE 1/2 BY 1-1/2" CHECKERED RAISED 1/4". CONFORM TO ASTM A-48, CL 35B, H-20 WHEEL LOADING.
3. CAST IRON FRAME AND COVER TO BE D&L FOUNDRY, OR APPROVED EQUAL.
4. FOR PIPES OVER 36" DIAMETER, CHECK WITH CITY ENGINEER FOR REQUIREMENTS.
5. USE A 5-SACK, CLASS "B" CONCRETE FOR THE BASE AND COLLAR SECTION, HAVING A 28-DAY COMPRESSIVE STRENGTH OF 2,500 P.S.I.
6. FRAME AND COVER TO BE MACHINED AND FITTED.
7. PRECAST CONCRETE BARREL, CONE AND RISER SECTIONS MUST CONFORM TO AASHTO DESIGNATION: M199 AND ASTM: C478.
8. PORTLAND CEMENT COLLAR SHALL BE 12" IN WIDTH AND 10" IN HEIGHT, LEVEL WITH RIM OF MANHOLE COVER.
9. MANHOLE IN THE EASEMENT AREA SHALL BE 36"-42" IN DIAMETER. RUB'R-NEK WRAP (1-800-231-4549) OR EQUIVALENT SHALL VE USED AROUND ALL JOINTS. MANHOLE FRAME AND COVER SHALL BE PAMREX HINGED TYPE OR EQUAL.
10. MANHOLE CASTING IN EASEMENT AREAS SHALL BE 4" RAISE WHILE MANHOLE CASTING ON STREETS SHALL BE 8" RAISE.
11. BACKFILL AROUND MANHOLE SHALL BE CDF IN THE STREET. CDF SHALL BE 1.5-SACK MIX WITH FINE AGGREGATE PER CUBIC YARD. IN THE EASEMENT, NATIVE SOIL BACKFILL MAYBE ACCEPTED WITH A MINIMUM OF 90% RELATIVE COMPACTION OR WITH ENGINEER'S APPROVAL.
12. 8" MINIMUM DRAIN ROCK SHALL BE PLACED UNDERNEATH MANHOLE BASE.



STANDARD SANITARY SEWER MANHOLE

DEPARTMENT OF PUBLIC WORKS

APPROVED BY

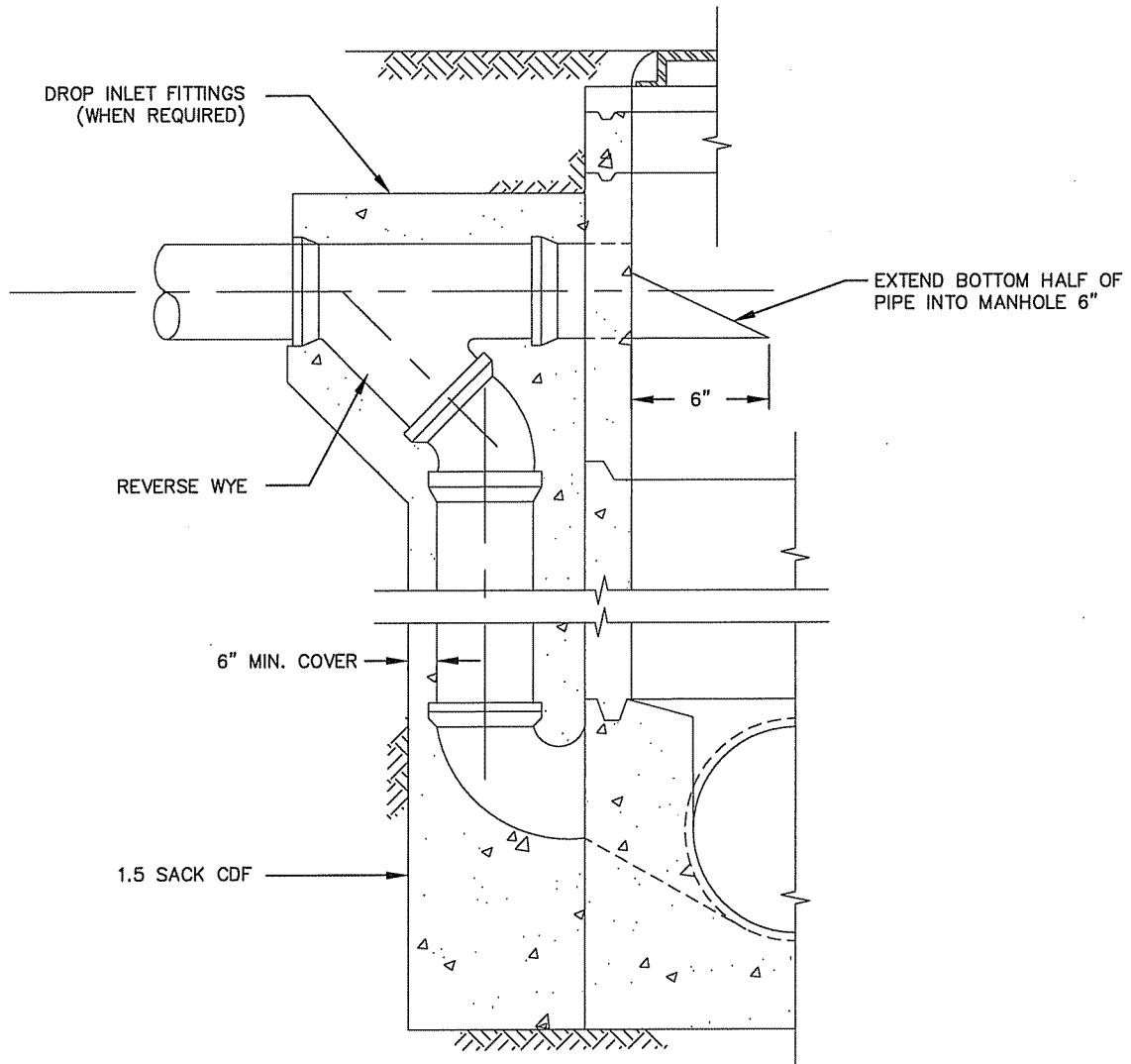
DATE

8/22/06

DRAWING NO.

SS-3

(3 of 4)



NOTE:

1. USE DROP INLET WHEN THE DISTANCE BETWEEN THE OUTLET PIPE INVERT AND THE INLET PIPE INVERT IS GREATER THAN 2 FEET (2").
2. WHERE DROP IS TOO LOW TO USE 1/8 AND 1/4 BENDS, ADJUST LOCATION OF WYE SO THAT PIPE EXTENDS STRAIGHT FROM WYE TO MANHOLE PENETRATION.



MANHOLE DROP INLET

DEPARTMENT OF PUBLIC WORKS

APPROVED BY

DATE

8/23/06

DRAWING NO.

SS-3

(4 of 4)