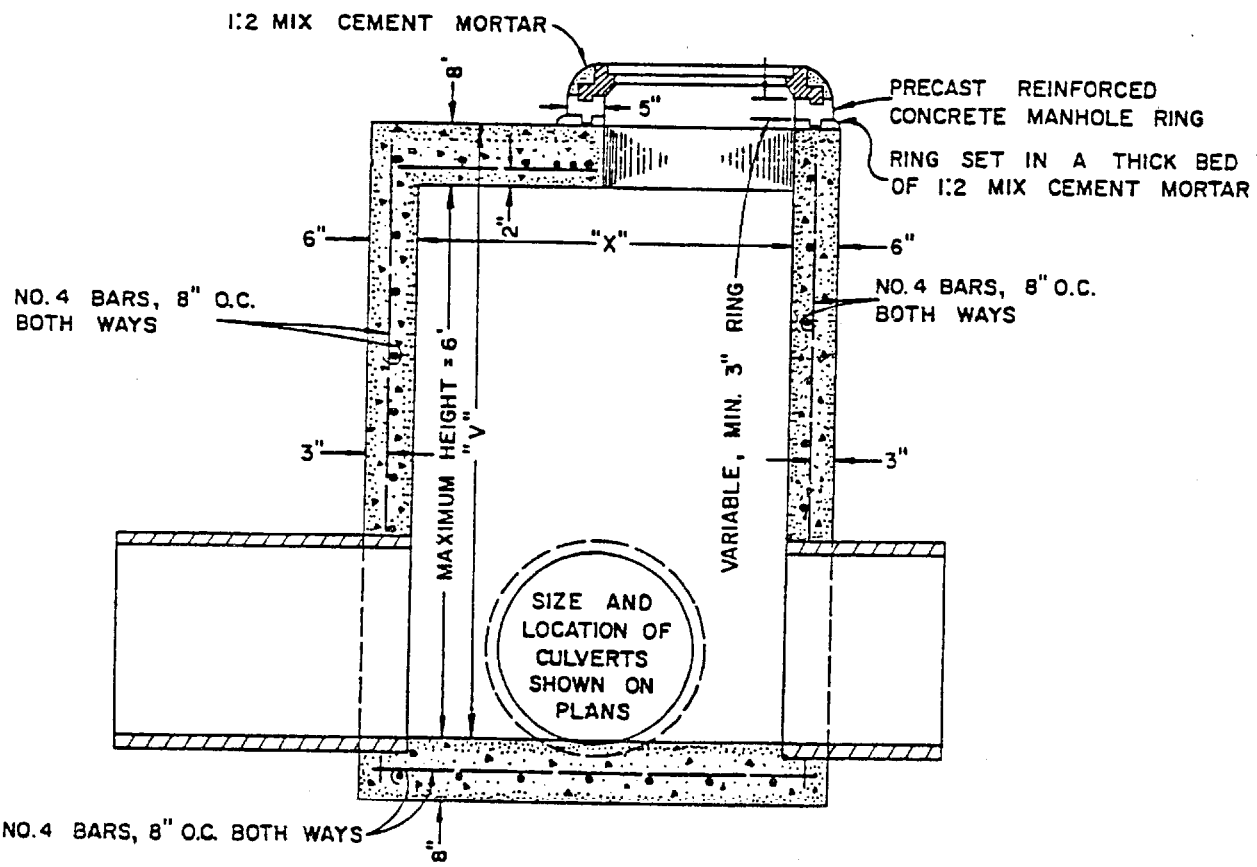


NO. 6 BARS PLACED DIAGONALLY

"X": SHOWN ON PLANS.
 "Y": SHOWN ON PLANS.
 "V": SHOWN ON PLANS.
 MAX. "X" DISTANCE = 4'
 MAX. "Y" DISTANCE = 7'

NO. 6 BARS, 8" O.C. BOTH WAYS.



- NOTES:**
1. STORM DRAIN CLEANOUT SHALL BE CONSTRUCTED OF CLASS "A" CONCRETE.
 2. CLEARANCE FROM I.D. OF PIPE TO CLEANOUT WALL SHALL BE 4" MIN.
 3. APPROVED PRECAST CONCRETE MANHOLE SHAFT RINGS WILL BE ACCEPTED IN LIEU OF CAST-IN-PLACE SHAFT

Revisions	CITY OF BIG BEAR LAKE	Standard Plan No.
4	STORM DRAIN CLEANOUT	
3		213
2	APPROVED	
1	DRAFT	
	16 OCT 89	