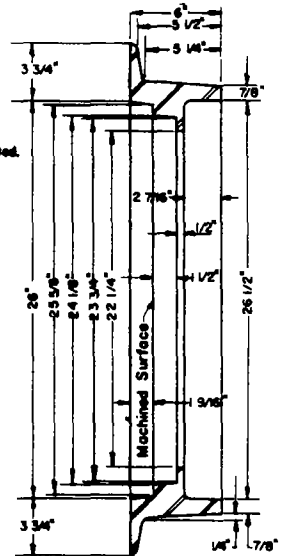


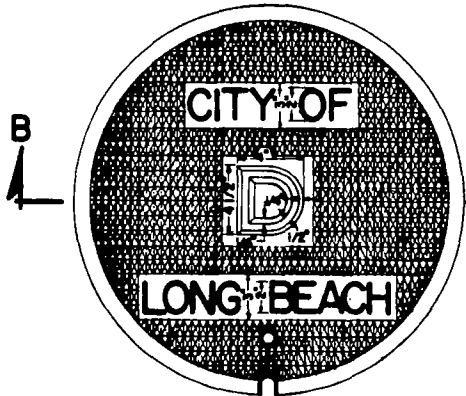
PLAN VIEW  
A

NOTE -  
All fillet radii 1/8" unless otherwise noted.

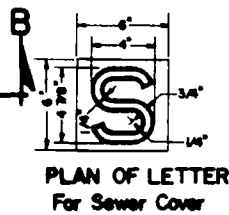


SECTION A-A

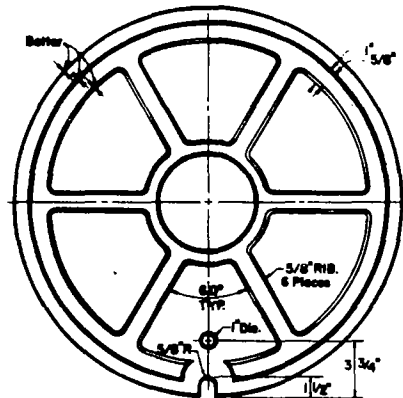
MANHOLE FRAME



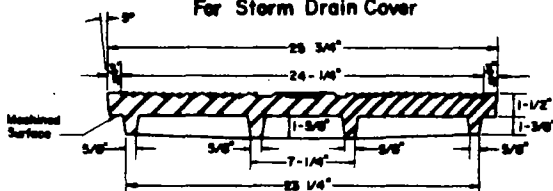
PLAN OF TOP  
For Storm Drain Cover



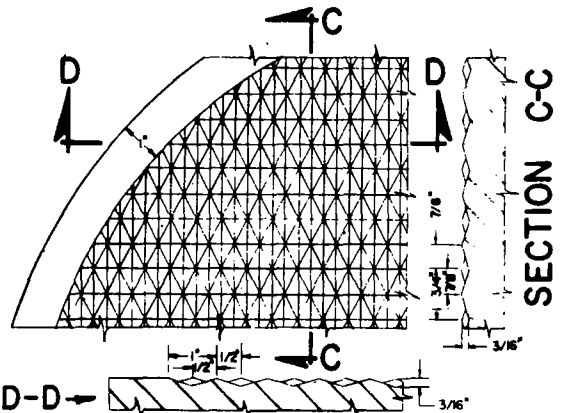
PLAN OF LETTER  
For Sewer Cover



PLAN OF BOTTOM



SECTION B-B



SECTION C-C

SECTION D-D

MANHOLE COVER

FOR NOTES SEE STANDARD PLAN 616

REVISIONS		CITY OF LONG BEACH, CALIFORNIA DEPARTMENT OF PUBLIC WORKS	STANDARD PLAN NO.
NO.	DATE		
1		INVERTED MANHOLE FRAME AND COVER	617
2			
3		APPROVED BY: <i>Edward J. Gutz</i> CITY ENGINEER R.E. No. 24233	DATE: 6-26-89 EX. DATE 12-31-89
4			
			SHEET 1 OF 1