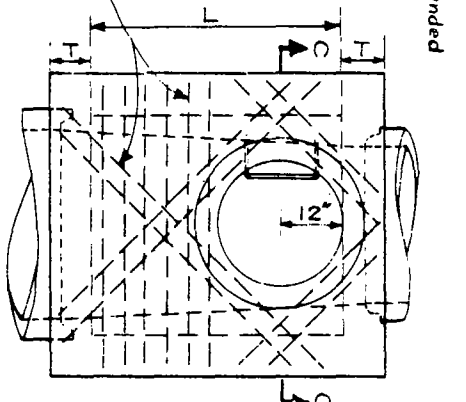
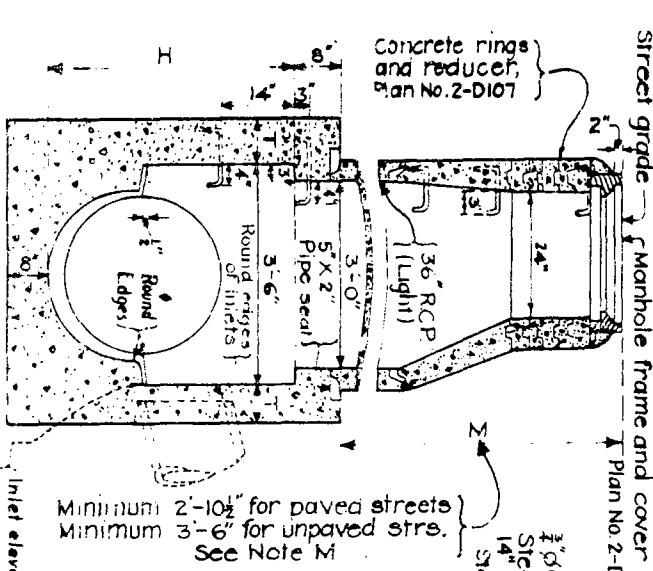


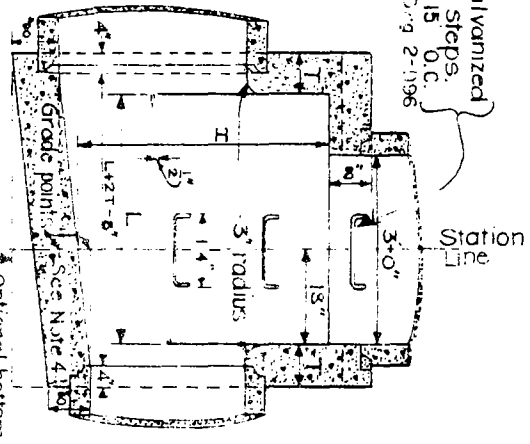
PLAN  
(Shaft not shown)



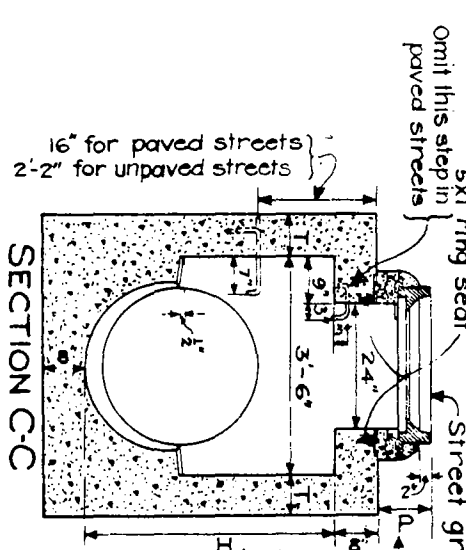
DETAIL N PLAN  
(Shaft not shown)  
See Note M



SECTION A-A



SECTION B-B



SECTION C-C

NOTES

- H- HEIGHT H (in Sec A-A and Sec B-B) shall be not less than 4'-0" but may be increased if approved by the Engineer. For H (in Sec. C-C) see Note P.
- L- LENGTH L shall be at least 18" unless otherwise shown on plan. L may be increased if location of manhole shaft is offset to meet pipe grade.
- M- SHAFT shall be constructed as per Sec. C-C and Detail N when depth M from street grade to top of box is less than 2'-10 1/2" for paved streets or 3'-6" for unpaved streets.
- P- DEPTH P may be reduced to an absolute limit of 6" when larger values of P would reduce H (in Sec. C-C) to 3'-6" or less.
- T- T shall be 8" for values of H up to and including 6 feet.
- 7 Where Pressure Manhole Nolis specified on plans see Std Dwg. 2-0210 note 3.
- 1- STEPS shall be 3" round, galvanized steel and anchored not less than 6 inches in the walls of structure. Unless otherwise shown, steps shall be spaced 14" to 15" O.C. See Std Dwg. 2-0196.
- 2- REINFORCING STEEL shall be per 2-D171, straight bars 1 1/2" clear from face of concrete.
- 4- STATIONS of manholes shown on plan apply at center line of shaft. Elevations are shown at shaft center and refer to the prolonged invert grade line. See Note 5.
- 5- FLOOR or manhole shall be steel-troweled.
- 6- RINGS, reducer and pipe for access shaft shall be sealed in mortar and neatly pointed or wiped inside shaft.

REFERENCES

NAME	DATE	REVISIONS	DESCRIPTION

LOS ANGELES COUNTY  
FLOOD CONTROL DISTRICT  
MANHOLE NO. 1  
PLAN, SECTION AND  
DETAIL

APPROVED BY: *[Signature]*  
DATE: 5-1-74  
NO. 2-D102

DESIGNED BY: *[Signature]*  
CHECKED BY: *[Signature]*  
SCALE: AS SHOWN