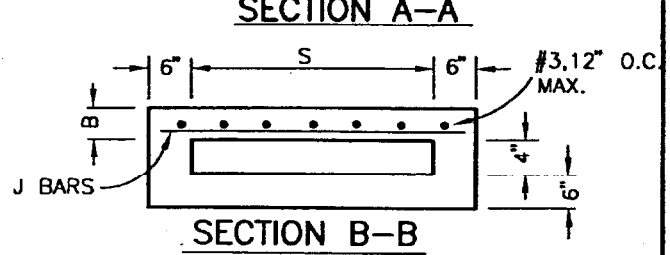
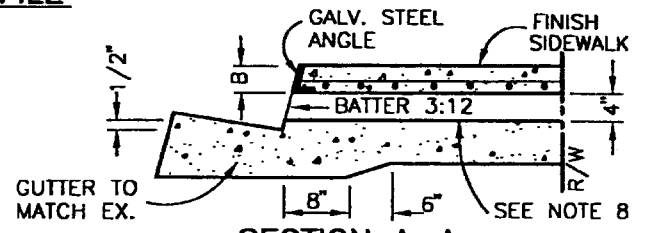


S	J BAR SPACING
12"	7"
18"	7"
24"	7"
30"	7"
36"	7"
42"	6"
48"	5"
54"	6 1/2"
60"	5"
66"	4"
72"	3 1/2"

FOR S=30" AND LESS USE 2 ANCHORS OTHERWISE USE 3 ANCHORS  
 FOR S=48" AND LESS, B=3"  
 USE 2-1/2" x 2" x 3/8" GALVANIZED STEEL ANGLE. OTHERWISE B=4". USE 3-1/2" x 3" x 1/2" GALVANIZED STEEL ANGLE.  
 J BARS ARE #3



REV.	APPR. BY	DATE

REV.	APPR. BY	DATE

	<b>PARKWAY DRAIN</b>		STANDARD PLAN 2002
	DRAWN: STAFF Department of Public Works	CKD.: STAFF	APPR. <i>Granville M. Bowman</i> Granville M. Bowman

NOTES:

1. FLOOR OF BOX SHALL BE TROWLED SMOOTH.
2. IF THE TOE OF SLOPE IS ALLOWED WITHIN THE R/W, INLET TYPE 1 BEGINS AT THE TOE RATHER THAN AT THE R/W LINE.
3. FOR OPEN DITCH (TYPE 2), THE 24" EXTENSION BEYOND THE R/W LINE IS NOT REQUIRED WHEN BACK OF WALK IS 24" OR MORE FROM THE R/W LINE: HOWEVER, THE PIPE SHALL EXTEND TO THE R/W LINE IN ANY EVENT.
4. TOP OF INLET STRUCTURE (TYPE 1 & 2) SHALL BE FLUSH WITH ADJACENT SURFACE WHERE PRACTICAL.
5. A HEADED STEEL STUD WITH A  $\frac{5}{8}$ " x  $6-\frac{3}{8}$ " 1" HEAD ATTACHED BY A FULL PENETRATION BUTT WELD MAY BE USED AS AN ALTERNATE ANCHOR.
6. NORMAL CURB FACE AT POINT M AND Q. CURB FACE IS B + 5" AT POINT N AND P.
7. THE 3" LEG OF THE  $\frac{5}{8}$ " DIA. ANCHORS SHALL BE PARALLEL TO THE TOP OF SIDEWALK.
8. SLOPE = 2.0%

REV.	APPR. BY	DATE

REV.	APPR. BY	DATE

 <p>CITY OF <b>Oxnard</b> Department of Public Works</p>	<p><b>PARKWAY DRAIN</b></p>		<p>STANDARD PLAN 2002</p>
	<p>DRAWN: STAFF</p>	<p>CKD.: STAFF</p>	<p>APPR.  Granville M. Bowman</p>
			<p>SHEET 2 OF 2</p>