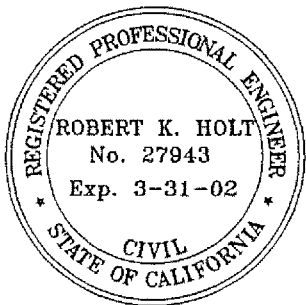
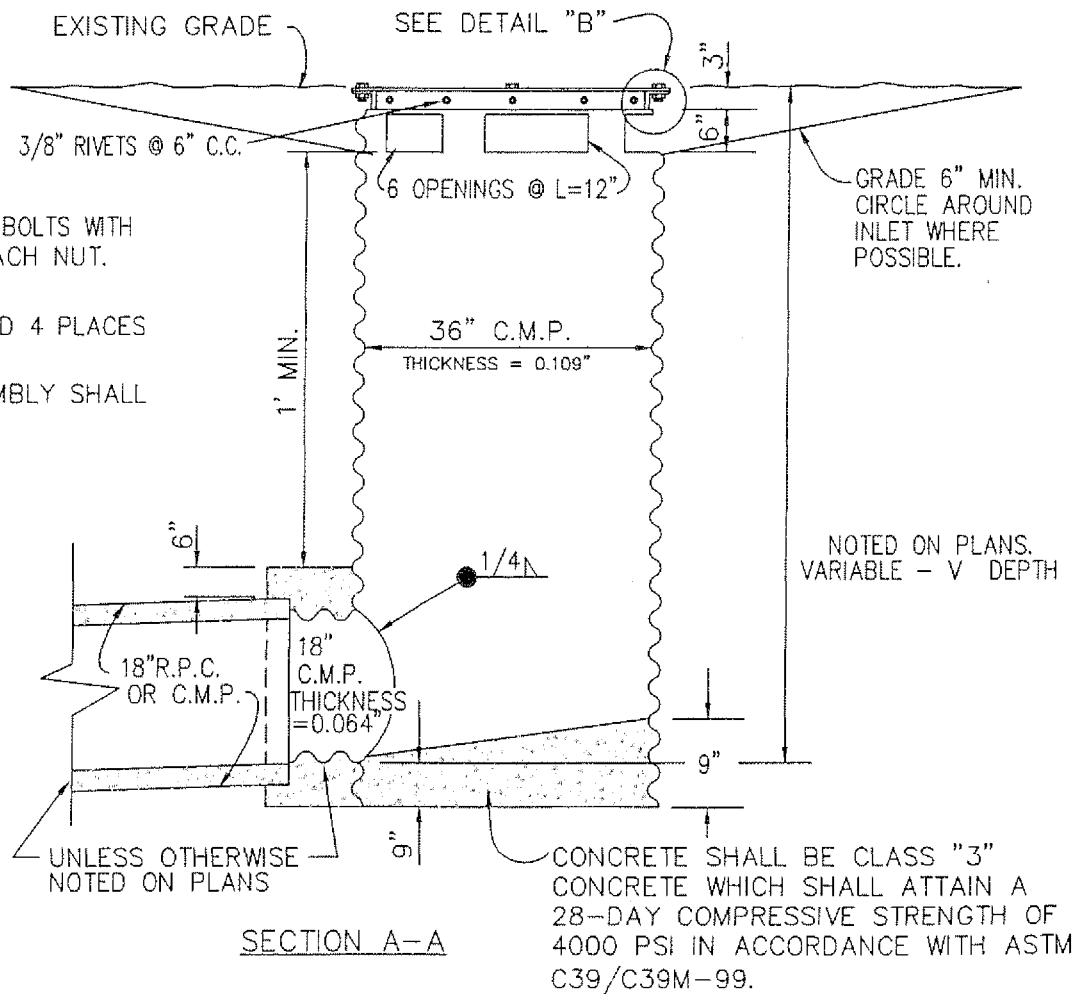


NOTE:
SEE SHEET 513A FOR COMPACTION
REQUIREMENTS AROUND THIS STRUCTURE.

NOTES:

1. 3/8" x 1 1/2" GALVANIZED BOLTS WITH HEX NUTS. FIELD WELD EACH NUT TO ANGLE.
2. DRILL HOLE 7/16" MATCHED 4 PLACES AS SHOWN IN PLAN.
3. PLATE AND ANGLE ASSEMBLY SHALL BE GALVANIZED.



APPROVED: PUBLIC WORKS DIRECTOR

James W. Rodkey Jr. DATE *9/7/00*
JAMES W. RODKEY, JR.

APPROVED: CITY ENGINEER
Robert K. Holt DATE *8/31/00*

ROBERT K. HOLT, P.E.

CITY OF
BLYTHE

INLET TYPE IX
(CHECKERED PLATE)

STANDARD DRAWING NO. SD-512

REVISION BY DATE