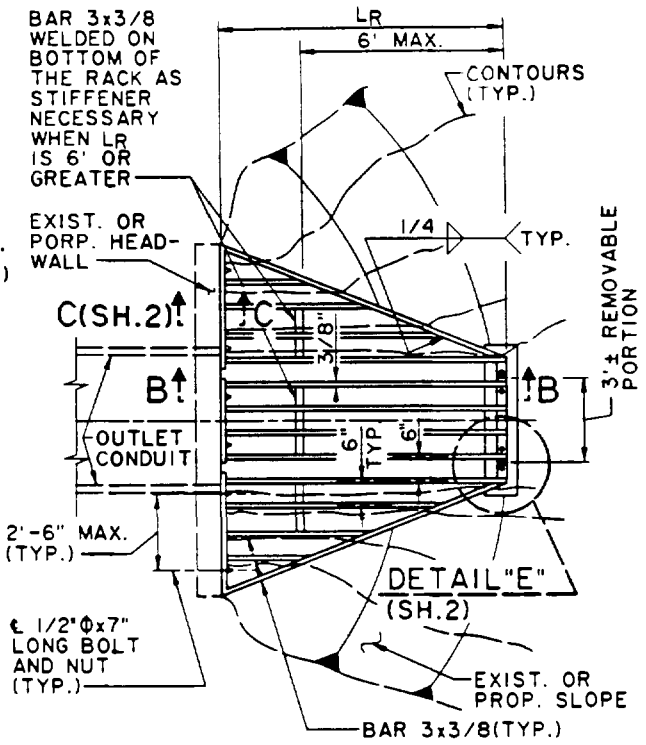
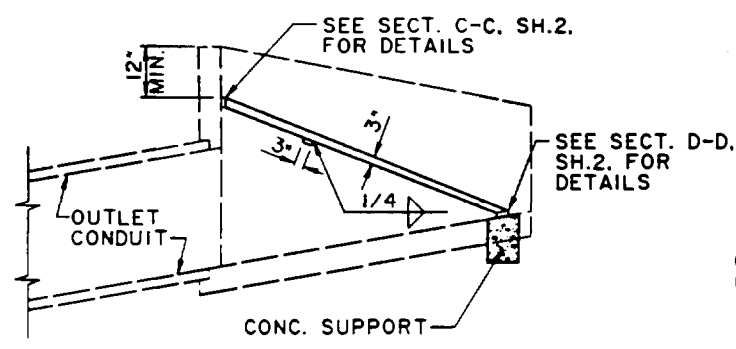


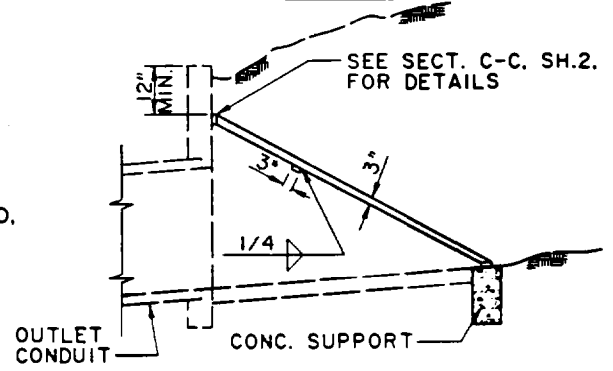
**PLAN CASE A**



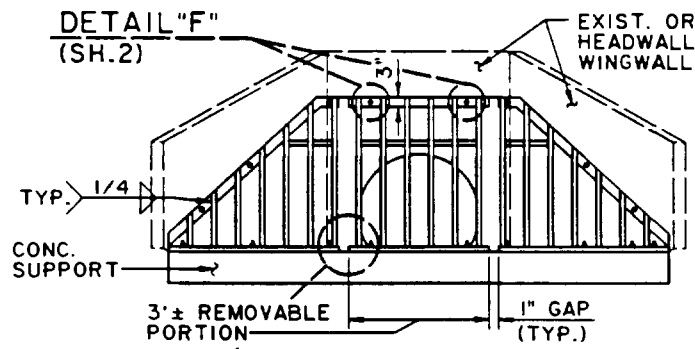
**PLAN CASE B**



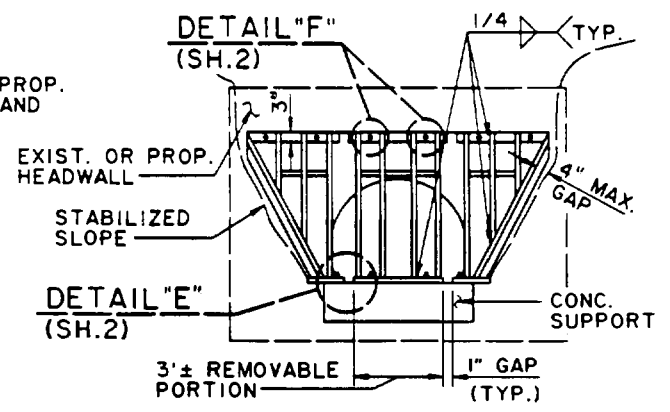
**SECTION A-A**



**SECTION B-B**



**ELEVATION CASE A**



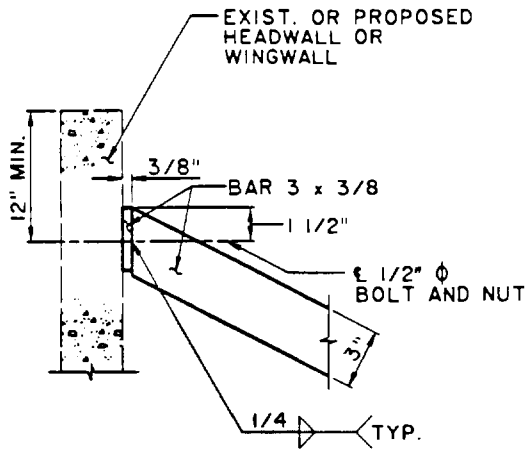
**ELEVATION CASE B**

**CITY OF RANCHO CUCAMONGA, CALIFORNIA**

APPROVED BY:  
*Whorrell* 6-1-92  
 CITY ENGINEER DATE  
 R.C.E. 24953

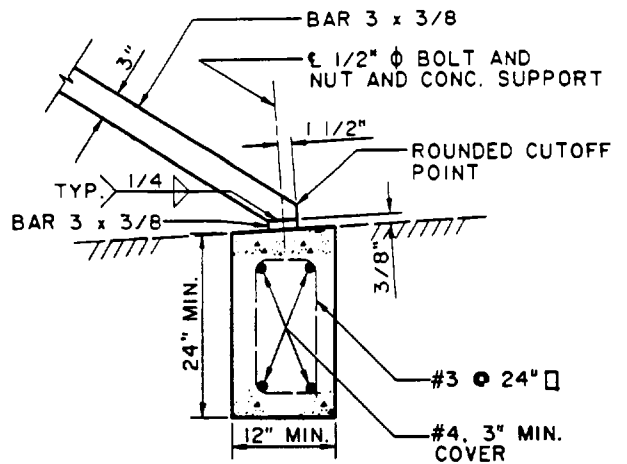
**TRASH RACK (INCLINED) FOR STORM DRAIN**  
 USE WITH STANDARD SPECIFICATIONS FOR PUBLIC WORKS CONSTRUCTION

STANDARD PLAN  
**312**  
 SHEET 1 OF 3



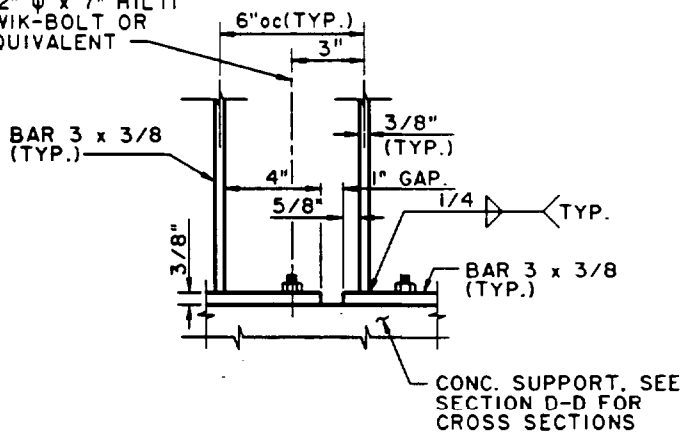
**SECTION C-C (SH. 1)**

**TYPICAL EXCEPT ON REMOVABLE PORTION**

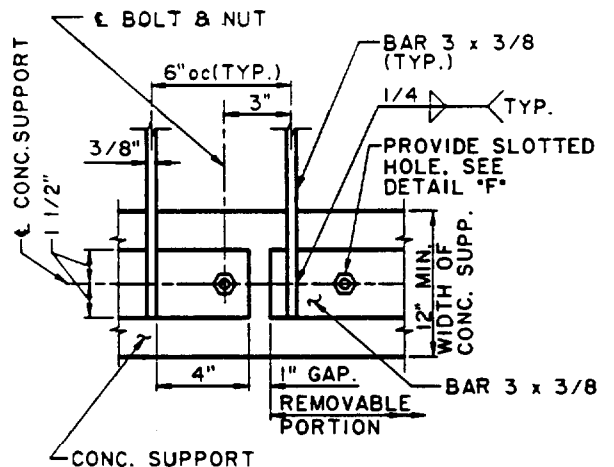


**SECTION D-D (SH. 1)**

€ STAINLESS STEEL  
1/2" Ø x 7" HILTI  
KWIK-BOLT OR  
EQUIVALENT

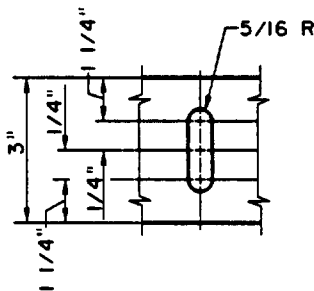


**ELEVATION**



**PLAN**

**DETAIL "E" (SH. 1)**



**DETAIL "F" (SH. 1)**

**APPLIES TO THE TOP AND BOTTOM BARS OF THE REMOVABLE PORTION ONLY**

**CITY OF RANCHO CUCAMONGA, CALIFORNIA**

APPROVED BY:

*W. McNeil* 6-1-92  
CITY ENGINEER DATE  
R.C.E. 24953

**TRASH RACK (INCLINED) FOR  
STORM DRAIN**

USE WITH STANDARD SPECIFICATIONS FOR PUBLIC WORKS CONSTRUCTION

STANDARD PLAN

312

SHEET 2 OF 3

**NOTES:**

1. MAXIMUM SIZE OF OUTLET TO BE USED WITH THIS RACK IS 48" PIPE OR 48" WIDE BOX. MAXIMUM LENGTH OF RACK  $L_R$  IS 10'.
2.  $L_R$  CAN BE ADJUSTED SO THAT THE SLOPE OF THE RACK IS APPROXIMATELY 2 HORIZONTAL TO 1 VERTICAL. AS LONG AS  $L_R$  IS NOT GREATER THAN L. (SEE PLANS. SHEET 1)
3. THE CONCRETE SUPPORT IS NECESSARY IF EXISTING OR PROPOSED INLET STRUCTURE HAS INADEQUATE SUPPORT. IT DOES NOT ELIMINATE THE NEED FOR A CUTOFF WALL BUT CAN BE INTEGRATED WITH ONE WHEN REQUIRED AT A PARTICULAR INSTALLATION.
4. GALVANIZE ALL EXPOSED FERROUS PARTS AFTER FABRICATION.
5. IF FIELD WELDS ARE NECESSARY, USE CALVICON, GALVALLOY OR CITY APPROVED EQUAL FOR COATING.
6. ALL BOLTS SHALL BE 1/2" IN DIAMETER AND 7" IN LENGTH. ON REMOVABLE PORTION OF THE RACK. USE STAINLESS STEEL BOLTS AND NUTS. WHERE HEADWALL AND WINGWALL ARE EXISTING, HILTI KWIK-BOLT OR EQUIVALENT CAN BE USED.

7-20-92	CITY OF RANCHO CUCAMONGA, CALIFORNIA		
REVISED	APPROVED BY:	TRASH RACK(INCLINED) FOR STORM DRAIN	STANDARD PLAN
	[Signature] 6-1-92		312
	CITY ENGINEER R.C.E. 24953	DATE	SHEET 3 OF 3
	USE WITH STANDARD SPECIFICATIONS FOR PUBLIC WORKS CONSTRUCTION		