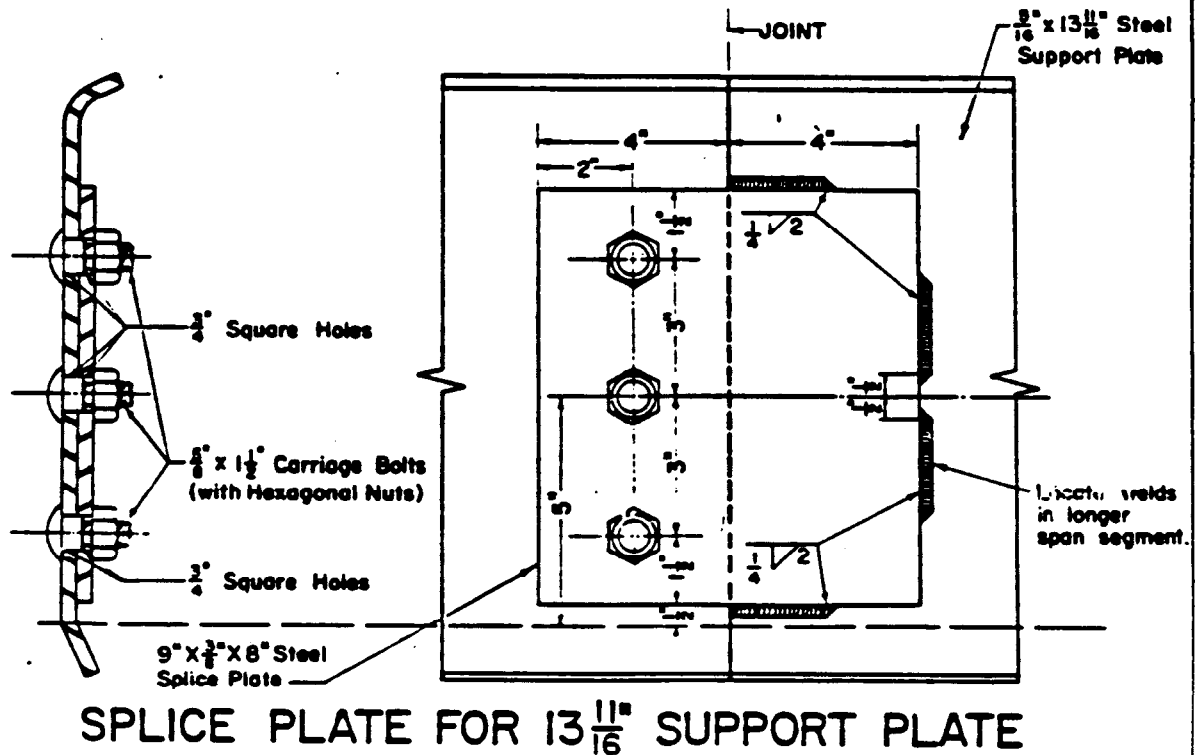
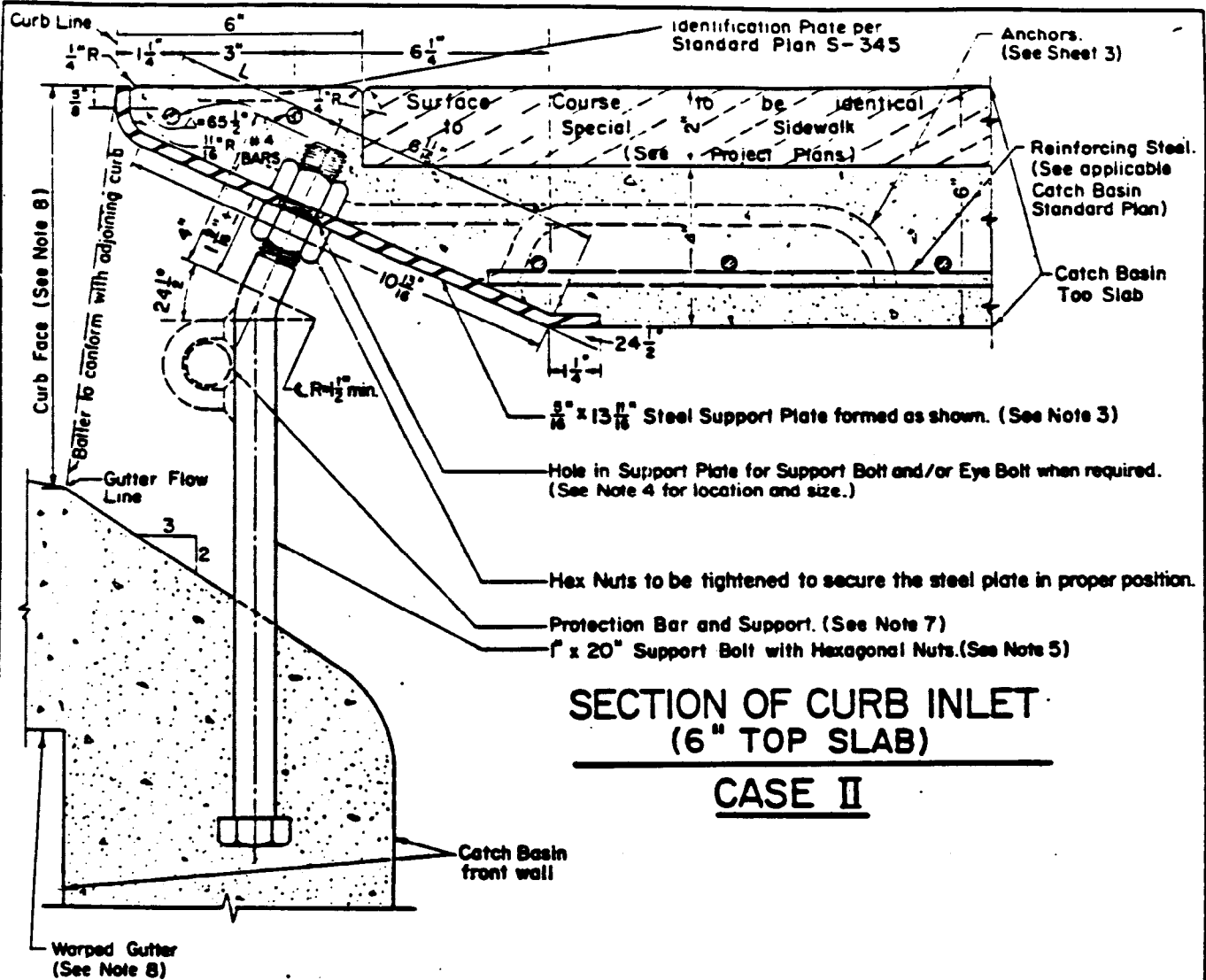
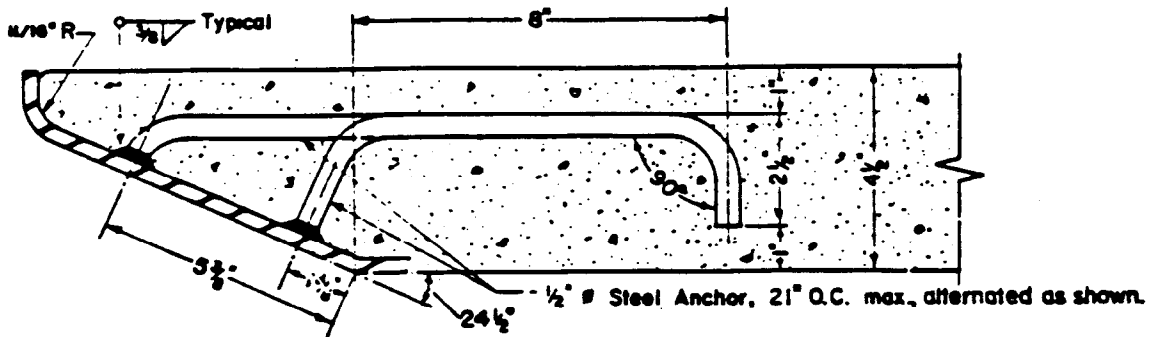


BUREAU OF ENGINEERING		DEPARTMENT OF PUBLIC WORKS		CITY OF LOS ANGELES	
CATCH BASIN CURB INLET AND SUPPORT DETAILS			STANDARD PLAN		
			S-340-0		
SUBMITTED <i>April 30, 1972</i>		REVISIONS		SUPERSEDES	
<i>Clifford M. Jimenez</i> <small>ENGINEER</small>		NO	DATE	DESCRIPTION	CITY ENGR
<i>Richard J. Johnson</i> <small>ENGINEER</small>					
APPROVED <i>May 21, 1972</i>					
<i>Richard J. Johnson</i> <small>ENGINEER</small>					
DESIGNED BY: WRN		DRAWN BY: RGM		CHECKED BY: LIE	
				VAULT INDEX NUMBER B-3365	
				SHEET 1 OF 4 SHEETS	

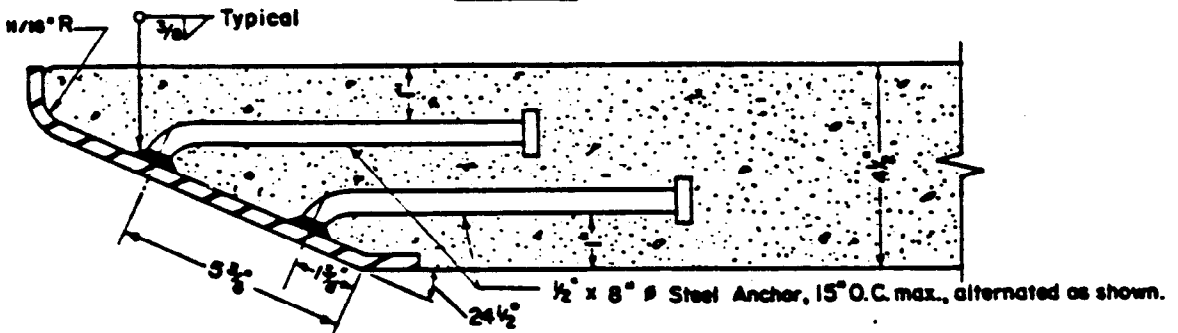


SPlice PLATE FOR 13 11/16" SUPPORT PLATE



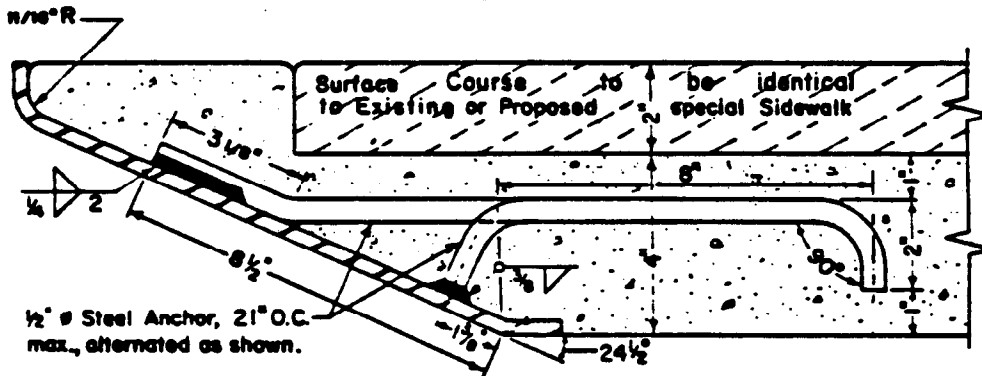
**HOOK ANCHOR FOR 4 $\frac{1}{2}$ '' TOP SLAB**

**CASE I**



**ROUND HEAD ANCHOR FOR 4 $\frac{1}{2}$ '' TOP SLAB**

**CASE I**



**HOOK ANCHOR FOR SPECIAL 6'' TOP SLAB**

**CASE II**

**ALTERNATE METHODS FOR SUPPORT PLATE ANCHORAGE**

NOTES FOR CATCH BASIN CURB INLET AND SUPPORT DETAILS

1. ALL METAL PARTS SHALL BE GALVANIZED AFTER FABRICATION.
2. LOCATION AND SPACING OF ANCHORS
  - a. SET ONE ANCHOR 3 INCHES FROM EACH END OF THE SUPPORT PLATE.
  - b. SPACE ANCHORS AS SHOWN FOR EACH ALTERNATE.
  - c. PLACE ONE ANCHOR WITHIN 6 INCHES AND ON EACH SIDE OF SPLICE JOINT.
3. THE LENGTH OF THE SUPPORT PLATE SHALL BE EQUAL TO THE NORMAL CATCH BASIN LENGTH, PLUS 1 FOOT. INSTALL THE SUPPORT PLATE SO THAT IT EXTENDS 6 INCHES BEYOND THE ENDS OF THE CATCH BASIN OPENING WHEN THE LENGTH OF SUPPORT PLATE IS LONGER THAN 22 FEET, THE SUPPORT PLATE MAY BE FABRICATED IN SECTIONS PROVIDED THE SECTIONS ARE SPLICED AS SHOWN HEREON, AND THE JOINT IS LOCATED A MINIMUM OF ONE FOOT FROM A SUPPORT BOLT.
4. PROVIDE A 1-1/8 INCH DIAMETER HOLE IN THE SUPPORT PLATE AT L = 4-1/8 INCHES AT EACH LOCATION A SUPPORT BOLT IS REQUIRED. PROVIDE A 3/4 INCH DIAMETER HOLE IN THE SUPPORT PLATE AT L = 3-5/8 INCHES, 12 INCHES FROM EACH END OF THE SUPPORT PLATE, WHENEVER A PROTECTION BAR IS REQUIRED.
5. SUPPORT BOLTS ARE REQUIRED WHEN THE LENGTH OF CATCH BASIN OPENING IS 7 FEET, OR GREATER, AND SHALL BE EVENLY SPACED ACROSS THE OPENING. SPACING SHALL NOT BE LESS THAN 3 FEET 6 INCHES O.C. NOR GREATER THAN 5 FEET O.C.
6. CASE II CURB INLET AND SUPPORT DETAILS SHALL APPLY WHEN SPECIAL SIDEWALK IS INDICATED ON THE PROJECT PLANS. OTHERWISE CASE I CURB INLET AND SUPPORT PLATE DETAILS SHALL APPLY.
7. PROTECTION BAR AND SUPPORT CONFORMING TO STANDARD PLAN S-349 ARE REQUIRED WHEN CURB FACE AT CATCH BASIN EXCEEDS 9-1/4 INCHES.
8. SEE STANDARD PLAN S-311 FOR DETAILS OF WARPED GUTTER AND FOR CURB FACE AT THE INLET (9 INCHES UNLESS OTHERWISE INDICATED ON THE PROJECT PLANS).