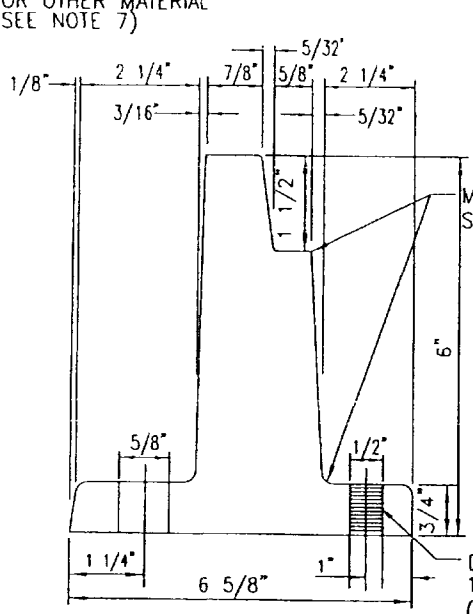


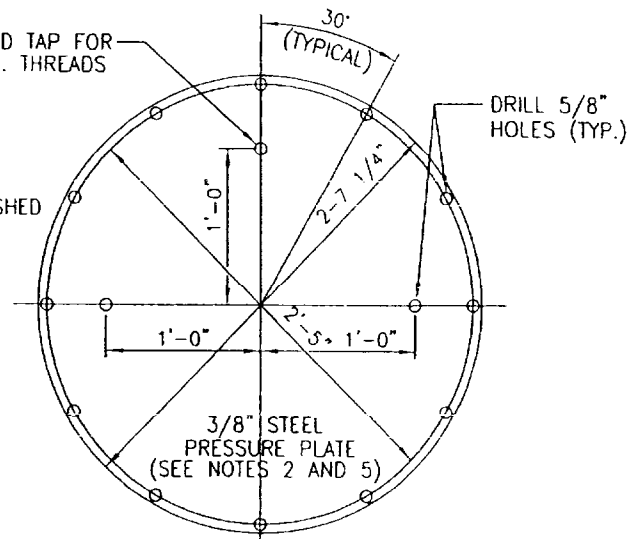
SECTION
MANHOLE FRAME AND COVER

MANHOLE WALL
(CONCRETE, MORTAR,
OR OTHER MATERIAL
SEE NOTE 7)

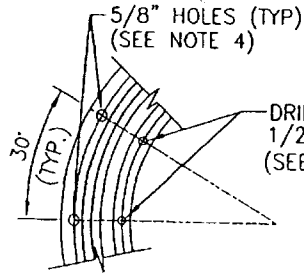


DETAIL OF FRAME

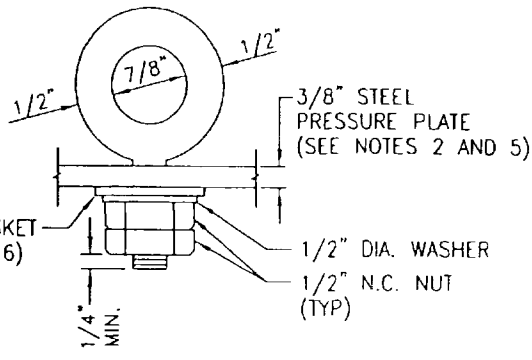
DRILL AND TAP FOR
1/2" N.C. THREADS



PRESSURE PLATE

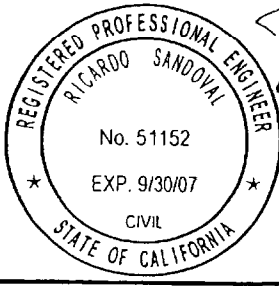


DETAIL OF BOLT HOLE
SPACING IN FRAME



EYEBOLT DETAIL
(2 REQUIRED)

NOT TO SCALE



APPROVED BY: *Ricardo Sandoval* 10.18.06
CITY ENGINEER DATE
RICARDO SANDOVAL
REVIEWED BY: *[Signature]*
DATE OF LAST REVISION: _____

CITY OF FONTANA	
MANHOLE FRAME AND COVER PRESSURE TYPE	
STD. PLAN NO. 3018	SHT 1 OF 2

07/10/06

NOTES

1. THE PRESSURE PLATE SHALL BE STEEL CONFORMING TO A 36, AND SHALL BE GALVANIZED AFTER FABRICATION, BUT BEFORE INSTALLATION OF SCREWS AND BOLTS.
2. CAP SCREWS AND EYEBOLTS, INCLUDING WASHERS AND NUTS ATTACHED THERETO, SHALL BE FABRICATED FROM ANY SERIES 300 STAINLESS STEEL.
3. ALL HOLES IN CAST IRON SHALL BE DRILLED AFTER CASTING, OR PLUGGED PRIOR TO CASTING. THEY SHALL NOT BE PUNCHED.
4. ALL IRON CASTING SHALL RECEIVE AN ASPHALTIC COATING AFTER FABRICATION.
5. GASKET MATERIAL SHALL BE 1/16" THICK NEOPRENE RUBBER. PRESSURE PLATE GASKET SHALL BE 2'-7 1/4" O.D.
6. ALL NUTS AND BOLTS SHALL BE TIGHTENED TO A MINIMUM TORQUE OF 25 FOOT-POUNDS.
7. FRAME SHALL BE SET ON 1/2" THICK MINIMUM WET MORTAR BASE, CLASS "B" MORTAR.
8. MANHOLE FRAME AND COVER AND PRESSURE PLATE ASSEMBLY SHALL BE TESTED FOR ACCURATE FIT PRIOR TO DELIVERY TO JOBSITE AND MARKED IN SETS.
9. DIMENSIONS SHOWN ON THIS PLAN ARE NOT EXACT EQUAL VALUES.



APPROVED BY: *[Signature]*
 CITY ENGINEER DATE
RICARDO SANDOVAL
 REVIEWED BY: 76
 DATE OF LAST REVISION: _____

CITY OF FONTANA	
MANHOLE FRAME AND COVER PRESSURE TYPE	
STD. PLAN NO. 3018	SHT 2 OF 2

07/10/06