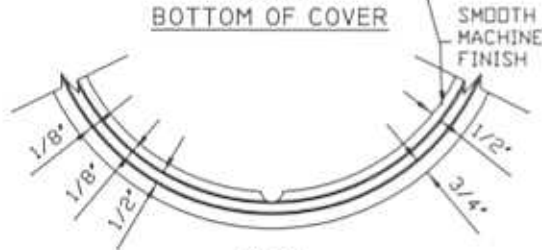


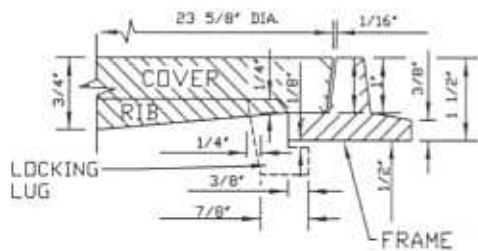
PLAN
TOP OF COVER



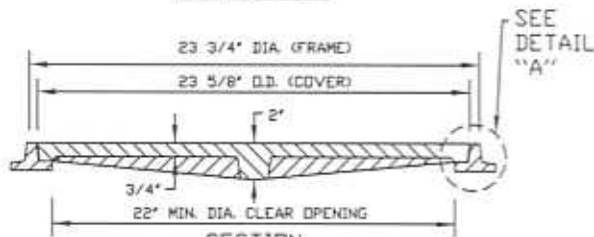
PLAN
BOTTOM OF COVER



PLAN
PORTION OF FRAME

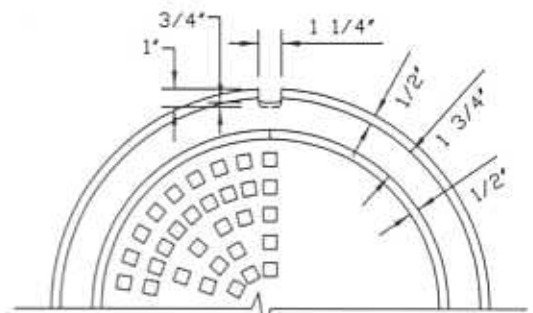


DETAIL "A"

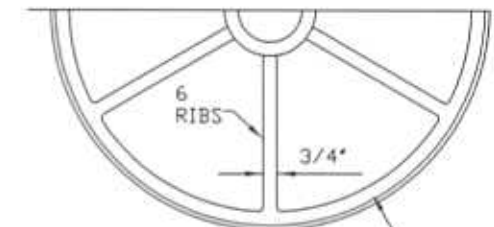


SECTION
COVER PARKWAY

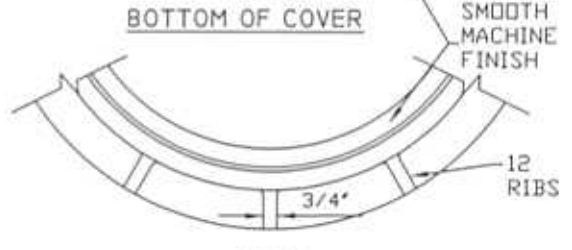
TOTAL WEIGHT- APPROX. 130 LBS. (58.97KG)



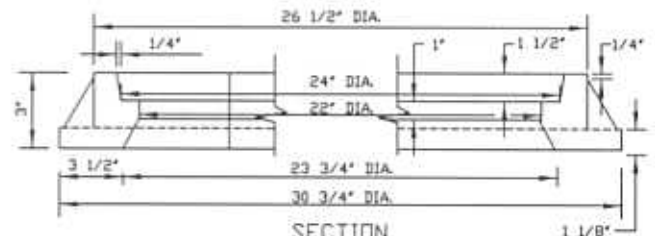
PLAN
TOP OF COVER



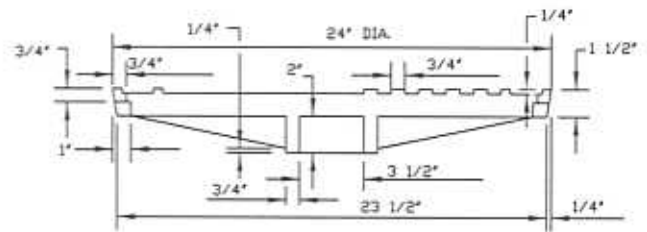
PLAN
BOTTOM OF COVER



PLAN
PORTION OF FRAME



SECTION
FRAME



SECTION
COVER ROADWAY

TOTAL WEIGHT- APPROX. 380 LBS. (172.37KG)

REVISIONS

DATE	INIT.
12/1/06	R.M.

APPROVED

DATE 12/1/06

 RONALD J. PARKS
 DEPUTY DIRECTOR, PUBLIC WORKS
 R.C.E. NO. 19744 EXP. 9-30-07

CITY OF TEMECULA

MANHOLE FRAMES
AND COVERS

STANDARD NO. 500