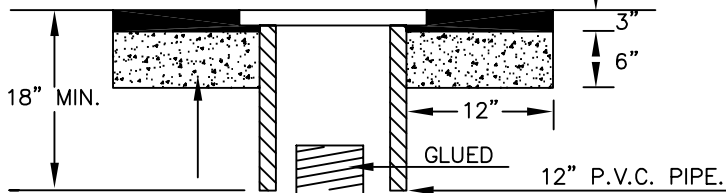
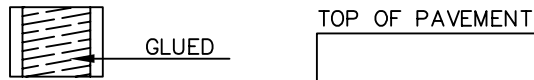
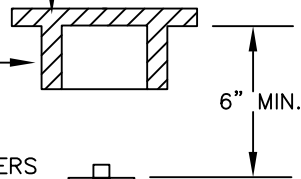


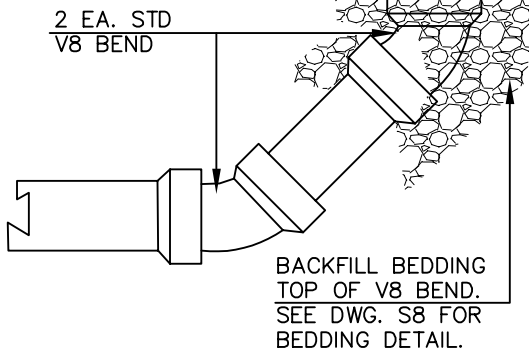
12" CAST IRON GATE CAP
PER DETAIL HEREON.

ALHAMBRA FOUNDRY
#29612 CAST IRON
BOX/LID MARKED
SEWER #

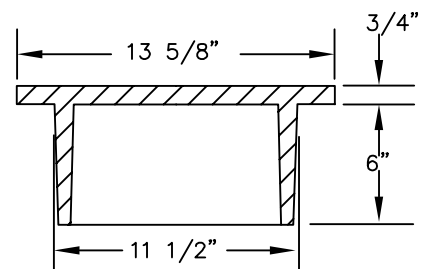
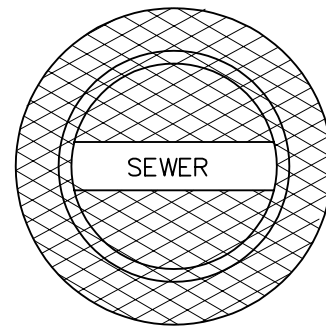
SEWER CLEAN-OUT RISERS
TO BE FITTED WITH MALE
SCREW IN PLUG.



12" WIDE X 6" THICK
CONCRETE COLLAR
WITH 3" ASPHALT
CONCRETE OVERLAY
(TYPICAL).



GATE CAP (HEAVY DUTY)



NOTES:

1. GATE CAP SHALL BE LABELED SEWER.
2. CLEANOUTS MAY BE USED WITH P.V.C. SEWER MAIN.
3. RISER SHALL BE SAME DIAMETER AS SEWER MAIN.

REV.	APPROVED	DATE	CITY OF CARLSBAD			
			SEWER MAIN CLEANOUT		6-04	
					CITY ENGINEER	DATE
					SUPPLEMENTAL STANDARD NO.	S-6