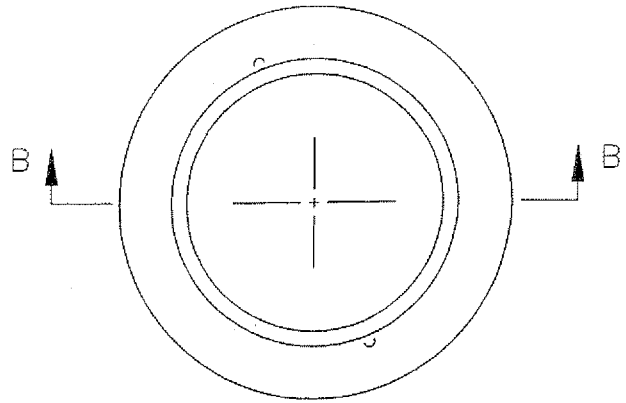
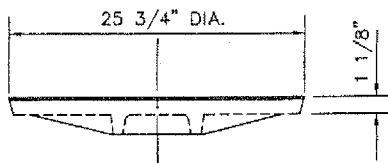


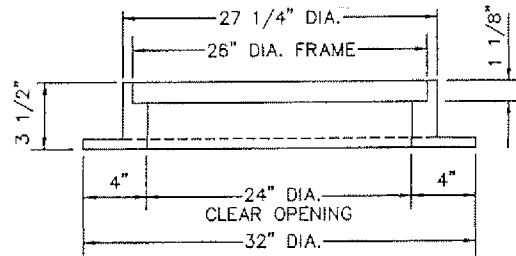
TOP PLAN OF COVER



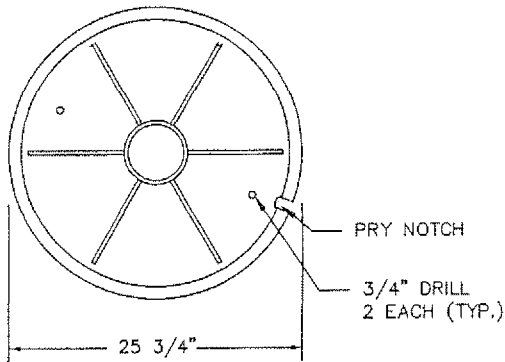
PLAN OF FRAME



SECTION A-A



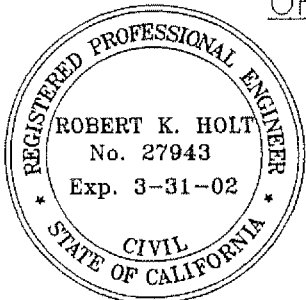
SECTION B-B



BOTTOM PLAN OF COVER

NOTES:

1. THE PRY NOTCH SHALL BE COMPLETELY COVERED BY THE FRAME SEATS TO PREVENT SURFACE WATER INTRUSION.
2. MACHINE SEATS AND GRIND LUGS SMOOTH, PERIMETER OF COVER SHALL BE GROUND SMOOTH, DIAMETER TOLERANCE $\pm 1/16"$.
3. THE CAST IRON USED SHALL HAVE A TENSILE STRENGTH OF 30,000 LBS. PER SQUARE INCH.
4. "COB SEWER" SHALL BE ON THE COVER AS SHOWN ABOVE.
5. MANHOLE COVER SHALL BE NON-ROCKING ALHAMBRA A-1254, OR APPROVED EQUAL.
6. SEALED MANHOLE COVER SHALL BE ALHAMBRA A-1254B, OR APPROVED EQUAL.
7. TO BE USED ON 48" DIAMETER MANHOLE SHAFTING.



APPROVED: PUBLIC WORKS DIRECTOR
James W. Rodkey, Jr. DATE *9/7/00*
 JAMES W. RODKEY, JR.
 APPROVED: CITY ENGINEER
Robert K. Holt DATE *8/31/00*
 ROBERT K. HOLT, P.E.

CITY OF
BLYTHE

MANHOLE FRAME AND COVER
 TYPE A

STANDARD DRAWING NO. SS-411

REVISION	BY	DATE