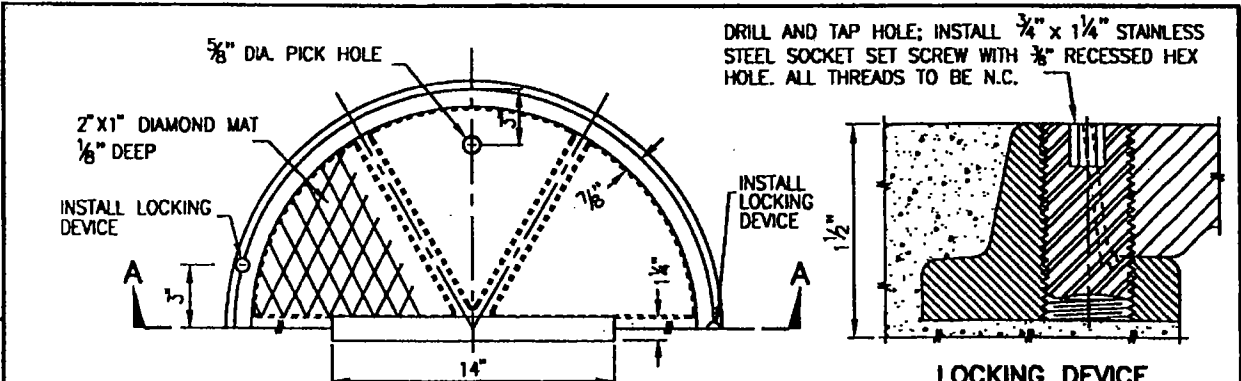
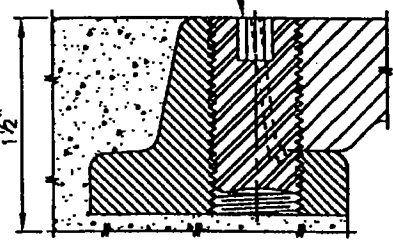


REV.	APPR. BY	DATE

REV.	APPR. BY	DATE



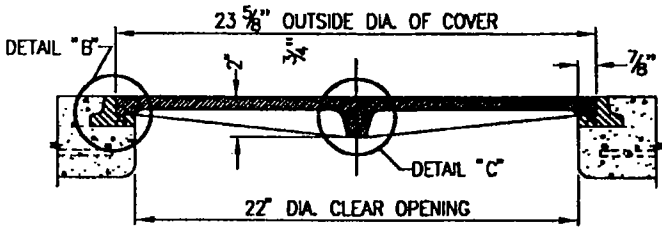
DRILL AND TAP HOLE; INSTALL 3/4" x 1/4" STAINLESS STEEL SOCKET SET SCREW WITH 3/8" RECESSED HEX HOLE. ALL THREADS TO BE N.C.



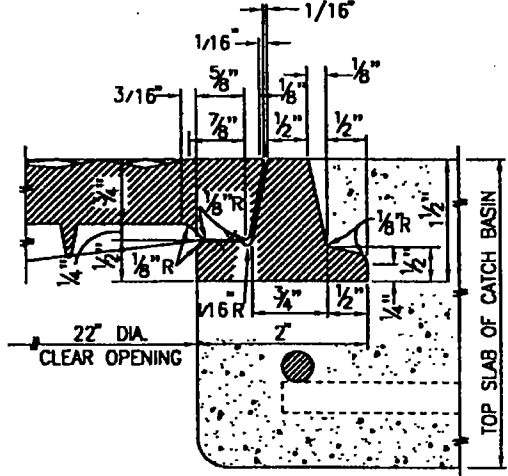
LOCKING DEVICE

AGENCY DESIGNATED INSCRIPTION. ALL LETTERS 1" HIGH. NO OTHER INSCRIPTION TO APPEAR ON EXPOSED SURFACES.

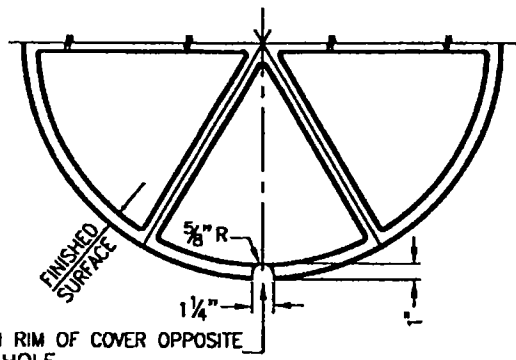
PLAN



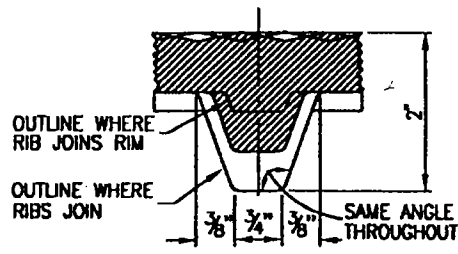
SECTION A-A



DETAIL "B"



BOTTOM OF MANHOLE COVER



DETAIL "C"

NOTES:

1. THE CAST IRON USED SHALL CONFORM WITH ASTM A-48M CLASS 35B.
2. THE FRAME AND COVER SHALL BE COATED WITH ASPHALTUM OR BITUMINOUS PAINT AFTER TESTING AND INSPECTION.
3. FOUNDRY IDENTIFYING MARK, HEAT AND DATE SHALL BE CAST ON THE BOTTOM OF THE COVER AND ON THE INSIDE OF THE FRAME.
4. IMPORTED COVERS AND FRAMES SHALL HAVE THE COUNTRY OF ORIGIN MARKING IN COMPLIANCE WITH FEDERAL REGULATIONS.
5. WEIGHT OF FRAME SHALL BE 30 LBS.. WEIGHT OF COVER SHALL BE 85 LBS. ACTUAL WEIGHTS SHALL BE WITHIN A RANGE OF 95% TO 110%.

	CATCH BASIN MANHOLE FRAME AND COVER		STANDARD PLAN 2002
	DRAWN: STAFF	CKD.: STAFF <i>LB</i>	PLATE 510
Department of Public Works		APPR. <i>Granville M. Bowman</i> Granville M. Bowman	SHEET 1 OF 1