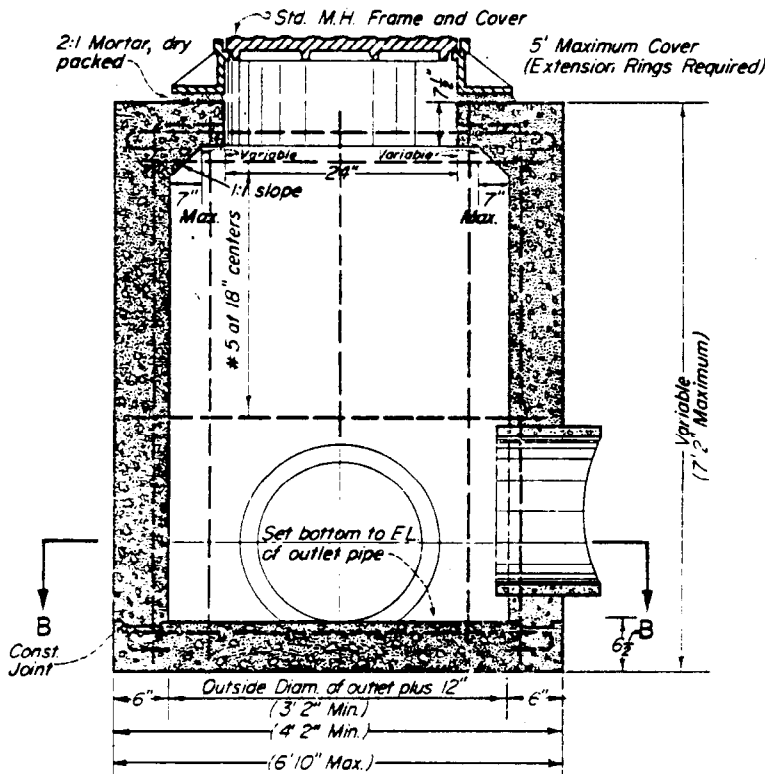


PLAN

SECTION B-B



SECTION A-A

GENERAL NOTES:

All concrete to be of Class "A" unless otherwise specified.

All reinforcing steel shall be of # 5 round bars and bent as shown.

Pipe shall be as specified or as directed by the Engineer.

Manhole casting shall be to specifications for "Standard Manhole Frame and Cover" - Manhole cover shall have cast thereon in raised letters "DRAIN", lettering to be 3" in height and raised $\frac{5}{8}$ "

All work shall conform to the applicable sections of the specifications entitled "Standard Specifications, State of California, Department of Transportation", current edition.

REVISED JUL '89

APPROVED BY THE CITY COUNCIL <i>Feb 3 1963</i>	STANDARD DRAINAGE STRUCTURES JUNCTION BOX	DATE <i>Jan 12, 1963</i>
CITY CLERK <i>[Signature]</i>		DRAWN <i>Hillis</i>
APPROVED <i>H.E. Bergon</i> CITY ENGINEER	CITY OF BAKERSFIELD CALIFORNIA ENGINEERING DEPARTMENT	CHECKED <i>J.D.H.</i>
		SCALES <i>None</i>
		S-19