

STANDARD CAST IRON ACCESSHOLE
 FRAME & COVER - SEE DWG. NO. S4.

PAVEMENT OR
 FINISH GRADE.

MIN. SLOPE
 1" PER FT.

WIDTH SHALL EQUAL
 INSIDE DIA OF PIPE.

12" WIDE X 6" THICK
 CONCRETE COLLAR
 WITH 3" ASPHALT
 CONCRETE OVERLAY
 (TYPICAL).

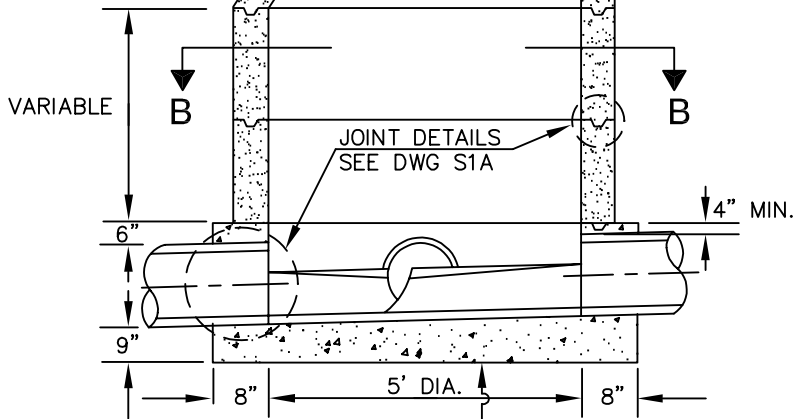
3' DIA.

ADJUST
 RINGS AS
 REQUIRED.
 MAX.=11",
 MIN.=5",
 TOP=2-2 1/2"
 RINGS.

INVERT
 GRADE

DEPTH=MIN.
 3/4" PIPE DIA.

SECTION C-C



SECTION A-A

NOTES:

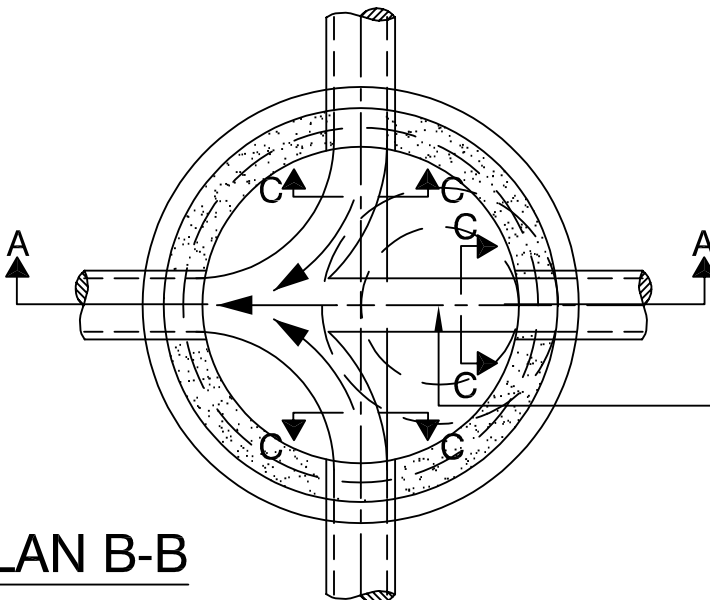
ALL CAST IN PLACE CONCRETE SHALL BE TYPE 564-B-3250.

ALL PIPE IN ACCESSHOLE SHALL BE PVC AND SHALL BE INCLUDED AS PART OF ACCESSHOLE.

ACCESSHOLE SHALL BE CONSTRUCTED IN ACCORDANCE WITH ASTM C-478.

STUB OUTS SHALL HAVE A MINIMUM LENGTH OF 2 FEET.

SDR 35 PVC PIPE MAY BE INSTALLED IN STRAIGHT-THROUGH ACCESS HOLES WITH NO JUNCTIONS. THE TOP SECTION OF PIPE SHALL BE REMOVED FLUSH WITH TOP OF SHELF. CUTS SHALL BE NEAT AND DRESSED MINIMIZING BURRS AND ROUGH EDGES.



PLAN B-B

WHEN ACCESSHOLE FORMS THE JUNCTION OF SEWERS AND/OR AN ANGLE IN MAIN ALIGNMENT, SPECIAL CARE SHALL BE USED IN FORMING THE CHANNELS TO FACILITATE THE FLOW OF SEWAGE. INVERTS SHALL BE TRUE TO GRADE AND ALIGNMENT AND FINISHED WITH SMOOTH SURFACE.

NOT TO SCALE

REV.	APPROVED	DATE	CITY OF CARLSBAD		6-04
			STANDARD		
			SEWER ACCESSHOLE		CITY ENGINEER
					DATE
					SUPPLEMENTAL STANDARD NO.
					S-1