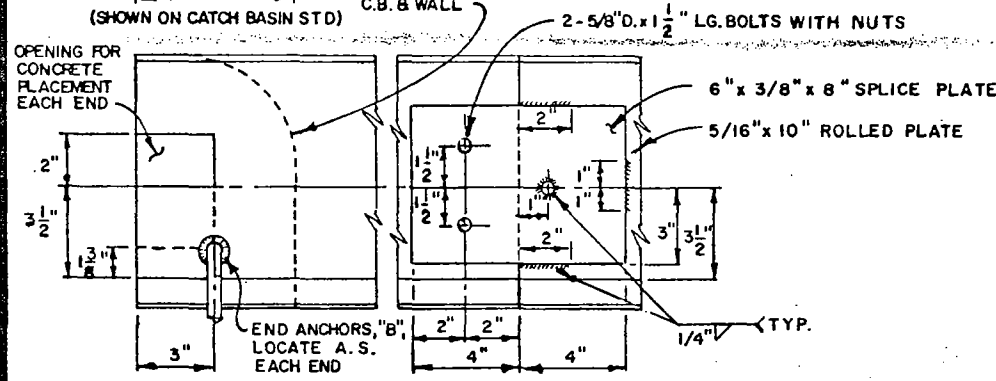


FACE PLATE ANCHORAGE



FACE PLATE END AND SPLICE DETAILS

NOTES

1. SUPPORT BOLT ANGLE α SHALL VARY TO CONFORM WITH BATTER OF ADJOINING CURB.
2. PROTECTION BAR SHALL BE INSTALLED, AND SUPPORT BOLTS SPACED, ACCORDING TO STANDARD DRAWING D-7
3. SUPPORT BOLTS SHALL BE EQUAL IN LENGTH TO CURB FACE PLUS 4" FOR ALL CURB BATTERS.
4. ALL EXPOSED METAL PARTS SHALL BE GALVANIZED AFTER FABRICATION.
5. PROTECTION BAR SHALL BE INSTALLED WHEN THE MINIMUM CLEAR OPENING OF THE CATCH BASIN EXCEEDS 6". BAR SHALL BE PLACED SUCH THAT NO MINIMUM CLEAR OPENING EXCEEDS 6".
 - (A) WHEN ONE BAR IS REQUIRED "S" SHALL BE 6 3/8", HOWEVER, THIS SHALL BE REDUCED IF NECESSARY, SO THAT THE CENTER OF THE PROTECTION BAR IS NOT LESS THAN 2 1/2" FROM THE ROLLED PLATE.
 - (B) WHEN TWO OR MORE BARS ARE REQUIRED "S" SHALL BE 6 3/8" WITH REMAINING BARS SPACED AT 6 3/4" C.C. THE SPACING OF THE TOP BAR SHALL BE REDUCED, IF NECESSARY, SO THAT THE CENTER OF THE BAR IS NOT LESS THAN 2 1/2" FROM THE ROLLED PLATE.
6. WHERE CATCH BASINS ARE TO BE CONSTRUCTED ON CURVES, THE MAXIMUM CHORD LENGTH FOR FACE PLATE SHALL BE SUCH THAT THE MAXIMUM DIMENSION FROM SAID CHORD (MEASURED PERPENDICULAR THERETO) TO THE TRUE CURVE WILL NOT EXCEED ONE INCH. WHERE MORE THAN ONE CHORD IS REQUIRED, CHORD LENGTHS SHALL BE EQUAL.
7. WHEN LENGTH OF FACE PLATE IS BETWEEN 22' AND 43', TWO SECTIONS MAY BE USED. WHEN LENGTH EXCEEDS 43', THREE SECTIONS MAY BE USED. SECTIONS SHALL BE SPLICED ACCORDING TO THE SPLICE DETAIL. SPLICES SHALL BE PLACED ONE FOOT FROM SUPPORT BOLT PER. STANDARD DRAWING D-7
8. LENGTH OF FACE PLATE IS W = 12" FOR ALL CATCH BASINS.
9. SET END ANCHORS 3" FROM ENDS OF FACE PLATE. PLACE ONE "A" ANCHOR AT EACH SIDE OF ANY AND ALL SPLICE JOINTS AND WITHIN 6" THEREOF.
10. CURB FACE SHALL BE AS SHOWN ON THE GENERAL PLAN.

DATE 1-25-78
CITY ENGINEER

CATCH BASIN OPENING DETAIL		
ENGINEERING DEPARTMENT	CITY OF PALM DESERT	

SCALE NONE
STD. DRAWING NO. D-6