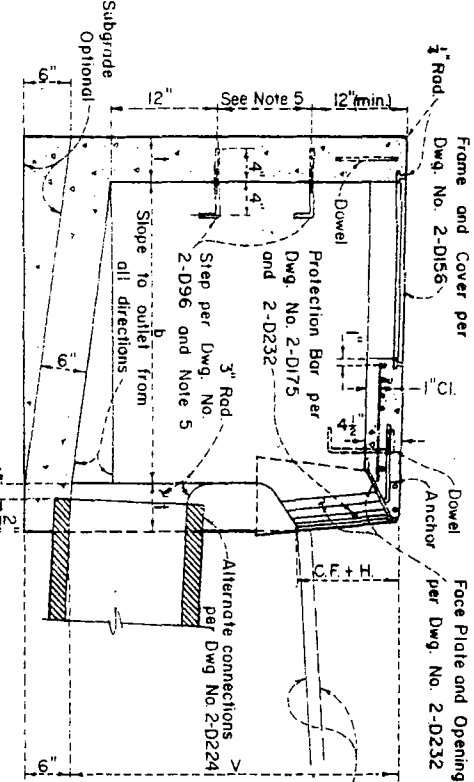
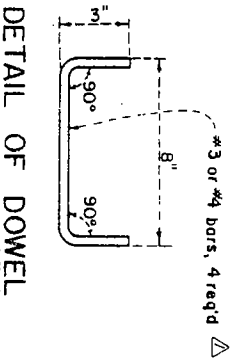


TOP SLAB STRUCTURAL PLAN



SECTION A-A



DETAIL OF DOWEL

NOTES

- 1 CONNECTOR PIPE:
Locate pipe on any alignment around the walls of the basin as shown on the general plan.
Pipe shall be trimmed to the final slope and length before the placement of concrete.
- 2 CONCRETE:
Design, $f_c = 3,000$ psi compressive strength at 28 days
Floor of the basin shall slope from all walls to the outlet and shall be given a steel-troweled surface finish
Curvature of the sill and side walls of the guller opening shall be formed by curved forms.
Surface of all exposed concrete shall conform in slope, grade, color, and finish to the existing, or proposed, curb and walk adjacent to the basin.
- 3 REINFORCEMENT: (Std Dwg. No. 2-D-171)
Top Slab - No. 3 or No. 4 bars required as spaced on the Structural Plan.
Walls and Floor - As required by Standard Drawing No. 2-D-172.
- 4 DIMENSIONS:
Curb face at catch basin opening (Exist. C.F.+H) shall be as required by Standard Drawings Nos. 2-D-188, 2-D-415, or as shown on the general plan.
V = 3'-6", t = 6 inches, and b = 3'-2" unless otherwise shown.
- 5 STEPS: (Std. Dwg. No. 2-D-96)
V to 3'-0" (incl), place one step 12 inches above the floor of the basin.
V over 3'-0" . place steps at 12-inch intervals from the floor of the basin with the top step at 12 inches (minimum) below the top surface of the top slab.

Supersedes drawing of the same number dated Aug. 1950

LOS ANGELES COUNTY
FLOOD CONTROL DISTRICT
**CATCH BASIN NO. 1
PLAN, SECTION,
AND DETAILS**

DATE	REVISIONS
7/24	4" x 3" opening

DATE	REVISIONS
7/24	4" x 3" opening

RECOMMENDED BY <i>C. E. Caldwell</i>	APPROVAL RECOMMENDED BY <i>W. J. ...</i>
DIVISION ENGINEER (LOCAL)	SAFETY CHIEF DEPUTY ENGINEER
APPROVED BY <i>Walter ...</i>	CHIEF ENGINEER
SCALE NONE	DWG. NO. 2-D-160
DATE 5-15-68	SHEET 1 OF 1