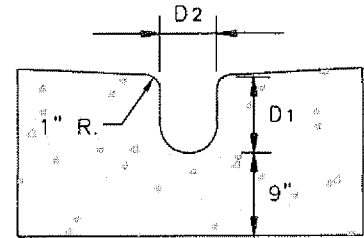
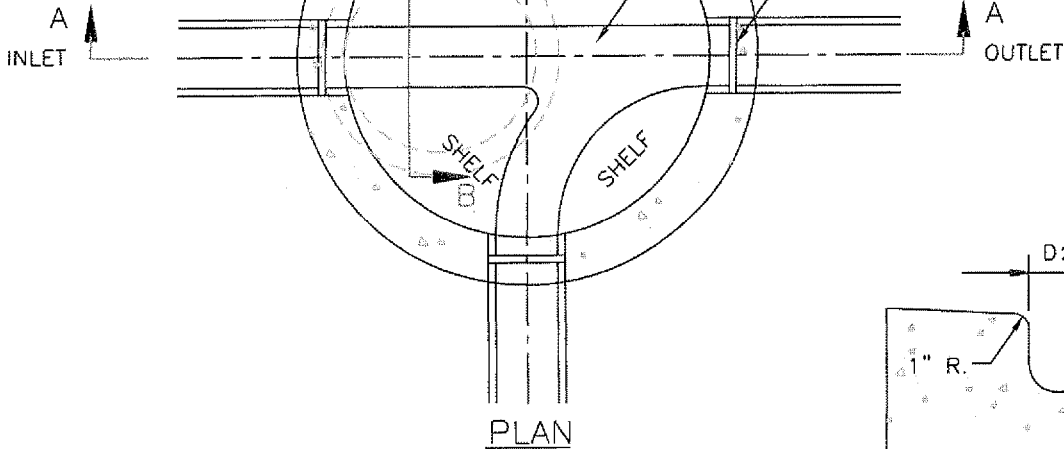


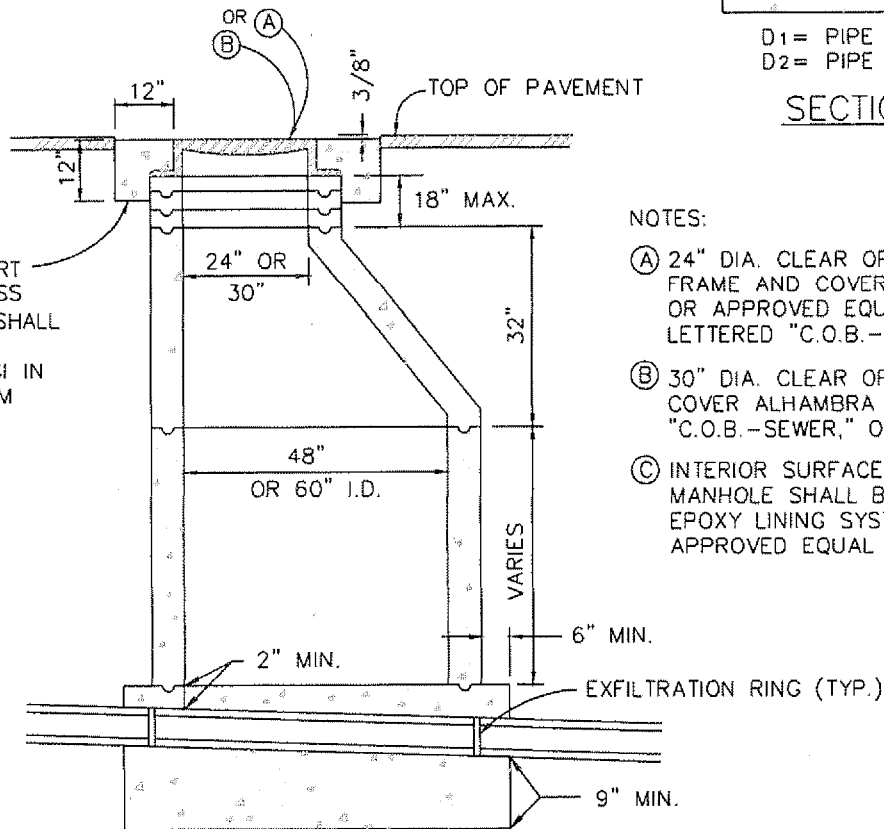
* SLOPE SHELF FROM PERIMETER CHANNEL 1" IN 12"

SEE NOTE 12, STD. DWG. 402A



D1 = PIPE O.D., 12" MIN.
D2 = PIPE I.D.

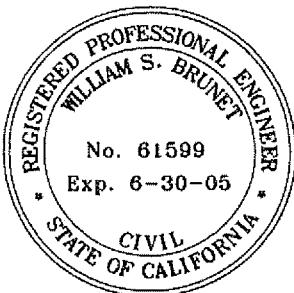
SECTION B-B



CONCRETE FOR SUPPORT COLLAR SHALL BE CLASS "3" CONCRETE WHICH SHALL ATTAIN A COMPRESSIVE STRENGTH OF 4000 PSI IN ACCORDANCE WITH ASTM C39/C39M-99.

NOTES:

- (A) 24" DIA. CLEAR OPENING MANHOLE FRAME AND COVER ALHAMBRA #A-1254, OR APPROVED EQUAL FOR 48" MANHOLE LETTERED "C.O.B.-SEWER."
- (B) 30" DIA. CLEAR OPENING FRAME AND COVER ALHAMBRA #A-1252 LETTERED "C.O.B.-SEWER," O.A.E.
- (C) INTERIOR SURFACE OF THE PRECAST MANHOLE SHALL BE COATED WITH AN EPOXY LINING SYSTEM, ZEBRON OR APPROVED EQUAL



APPROVED: PUBLIC WORKS DIRECTOR
James W. Rodkey Jr. DATE 1/14/02
 JAMES W. RODKEY, JR.
 APPROVED: CITY ENGINEER
William S. Brunet DATE 1/14/02
 WILLIAM S. BRUNET, P.E.

CITY OF
BLYTHE

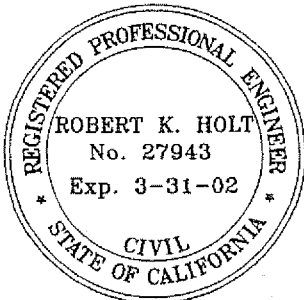
PRECAST MANHOLE
 DETAIL

STANDARD DRAWING NO. SS-402

REVISION BY DATE

GENERAL NOTES:

1. MANHOLE SECTIONS SHALL BE PRECAST REINFORCED CONCRETE HAVING A MINIMUM THICKNESS OF SIX INCHES AND CONFORMING TO ASTM C-478 REQUIREMENTS FOR MATERIALS AND MANUFACTURE AND ASTM REQUIREMENTS FOR REINFORCEMENT.
2. VERTICAL WALL OF CONE SHALL BE OPPOSITE OUTLET SIDE OF MANHOLE.
3. CONE SHALL BE RAISED WHEN GRADE RINGS EXCEED 18".
4. SUPPORT COLLAR SHALL CONSIST OF CLASS "3" CONCRETE.
5. JOINTS SHALL CONSIST OF 1-2 CEMENT MORTAR, NEATLY STRUCK AND POINTED, 3/8" MIN. THICKNESS, OR RAM-NECK, EXCEPT FOR GRADE ADJUSTING RINGS WHICH SHALL BE 1-2 CEMENT MORTAR ONLY.
6. CONCRETE SHALL BE CLASS "3" CONCRETE WHICH SHALL ATTAIN A 28-DAY COMPRESSIVE STRENGTH OF 4000 PSI IN ACCORDANCE WITH ASTM C39/C39M-99.
7. SHELF SHALL HAVE A MEDIUM BROOM FINISH.
8. THE MAXIMUM DROP BETWEEN THE OUTLET AND INLET OF THIS STRUCTURE IS 0.60' FOR STRAIGHT THROUGH FLOW AND 1.00' FOR SIDE INLET FLOW.
9. THIS MANHOLE IS FOR DEPTHS GREATER THAN 3'-0" AND LESS THAN 20'. MAXIMUM CARRIER PIPE 24" INTERNAL DIAMETER.
10. TROUGH:
 - A. SHALL NOT HAVE A FLAT BOTTOM.
 - B. SHALL HAVE A STEEL TROWELED FINISH.
 - C. DIAMETER OF FEEDLINE SHALL NOT "FLARE OUT" WHERE IT JOINS THE MAINLINE TROUGH.
11. "JIFFY RINGS" SHALL NOT BE ALLOWED.
12. FOR STRAIGHT THROUGH FLOW THE "Y" SHALL NOT BE CONSTRUCTED UNLESS A STUB OR LATERAL IS SHOWN ON THE PLANS AS BEING REQUIRED.
13. PVC T-LOCK LINING MAY BE REQUIRED AS DIRECTED BY THE CITY.
14. MANHOLE RING AND COVER SHALL BE RAISED TO FINISHED GRADE AND SUPPORT COLLAR INSTALLED AFTER PAVING OR FINE GRADING.
15. EXFILTRATION RINGS SHALL BE CONSISTENT WITH PIPE MANUFACTURER'S RECOMMENDATIONS.



APPROVED: PUBLIC WORKS DIRECTOR	
<i>James W. Rodkey, Jr.</i>	DATE <i>9/7/00</i>
JAMES W. RODKEY, JR.	
APPROVED: CITY ENGINEER	
<i>Robert K. Holt</i>	DATE <i>8/31/00</i>
ROBERT K. HOLT, P.E.	

CITY OF
BLYTHE

PRECAST MANHOLE
DETAIL

STANDARD DRAWING NO. SS-402A