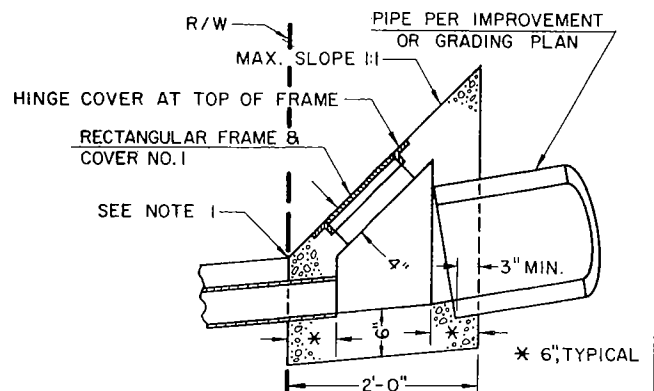
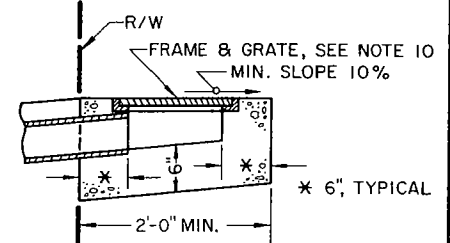


**NOTES:**

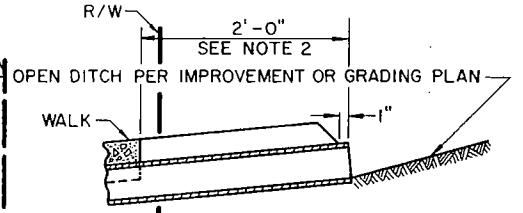
1. WHEN THE TOE OF SLOPE IS WITHIN THE R/W, INLET CASE I BEGINS AT THE TOE RATHER THAN AT THE R/W LINE.
2. FOR OPEN DITCH APPROACH (CASE III INLET), THE EXTENSION BEYOND THE R/W LINE IS NOT REQUIRED WHEN BACK OF WALK IS MORE THAN 2' FROM THE R/W LINE.
3. TOP OF INLET STRUCTURE (CASE I AND II) TO BE FLUSH WITH ADJACENT SURFACE WHERE PRACTICABLE.
4. ASBESTOS CEMENT CONDUIT OF EQUIVALENT AREA MAY BE SUBSTITUTED AT THE CONTRACTORS OPTION OR SPECIFIED ON PLAN FOR CASE I & II INLETS. HOWEVER, FULL WIDTH WALK MUST BE CONSTRUCTED.
5. CONSTRUCT P.C.C. WALK WHEN SPECIFIED ON PLAN. THE CONTRACT PRICE PAID FOR P.C.C. WALK ITEM SHALL INCLUDE WALK CONSTRUCTED IN CONJUNCTION WITH PARKWAY CULVERT.
6. "N" EQUALS NUMBER OF PIPES (MAXIMUM OF SIX) AS SPECIFIED ON PLAN.
7. INLET CASE TO BE SPECIFIED ON IMPROVEMENT OR GRADING PLAN.
8. ANGLE "α" EQUALS 0° UNLESS OTHERWISE SPECIFIED.
9. TYPE, DIMENSIONS, AND ELEVATIONS OF P.C.C. CURB AND GUTTER PER IMPROVEMENT PLAN.
10. UNLESS OTHERWISE SPECIFIED, FRAME AND GRATE FOR INLET CASE II SHALL BE ALHAMBRA FOUNDRY 14"x24" TYPE A-2422 (GALVANIZED) OR EQUAL.



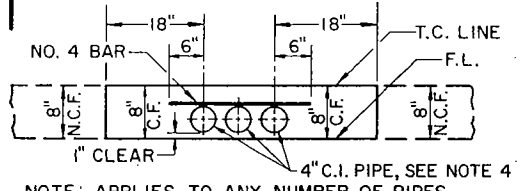
**CASE I INLET**  
TRANSITION STRUCTURE SECTION



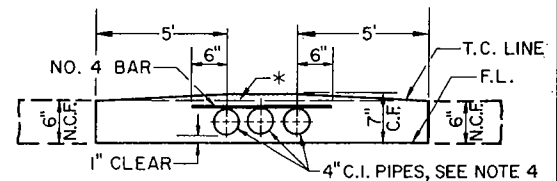
**CASE II INLET**  
DROP INLET CATCH BASIN SECTION



**CASE III INLET**  
GRADED DITCH SECTION



**CURB PROFILE**  
8" NORMAL CURB FACE



**CURB PROFILE**  
6" NORMAL CURB FACE

**LOS ANGELES COUNTY ROAD DEPARTMENT**

**PARKWAY DRAIN NO.2**

STANDARD PLAN

62-02

APPROVED J. A. Morhan 1 Dec 67  
ROAD COMMISSIONER DATE

DRAWN BY L.L.L. 12-67, CHECKED BY G.J.B. 12-67, REV. 6-70: CHANGED TITLE.