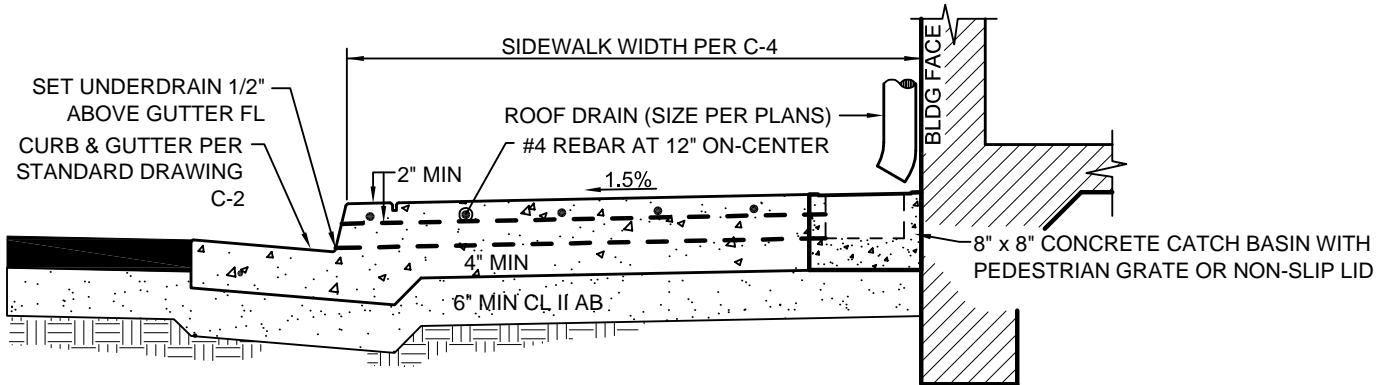
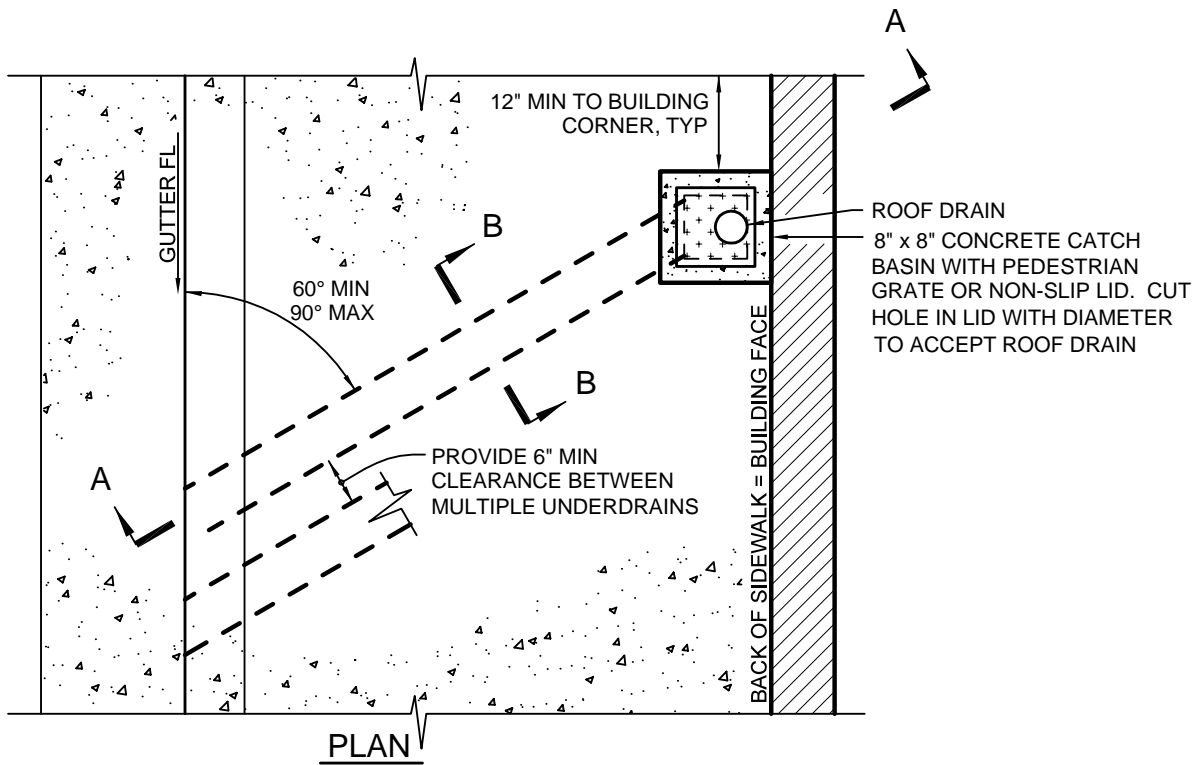


Revisions

| Description | Approved | Date | Description | Approved | Date |
|-------------|----------|------|-------------|----------|------|
| | | | | | |



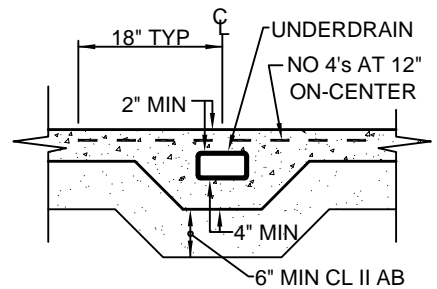
SECTION A-A
SHOWN AT 90°



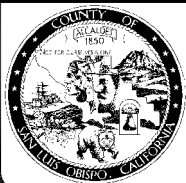
PLAN

NOTES:

1. THE UNDERDRAIN SHALL BE A 3-INCH TALL BY 5-INCH WIDE (MINIMUM) RECTANGULAR CAST IRON CONDUIT, ALHAMBRA A-470 OR DEPARTMENT APPROVED EQUAL. THE DESIGN WIDTH SHALL BE DETERMINED BY THE PROJECT ENGINEER AND SHOWN ON THE PLANS.
2. THE UNDERDRAIN SHALL BE SET FLUSH WITH THE CURB FACE AND PLACED 1/2-INCH ABOVE THE GUTTER FLOWLINE.
3. THE SLOPE OF THE UNDERDRAIN SHALL MATCH THE SIDEWALK CROSS SLOPE.
4. UNDERDRAIN SHALL NOT BE LOCATED CLOSER THAN 5-FEET TO A DRIVEWAY OR CURB RETURN.
5. MULTIPLE DRAINS SHALL HAVE 6-INCH MINIMUM CLEARANCE WITH MAXIMUM OF 3 DRAINS PER 10-FOOT OF SIDEWALK.
6. ALL JUNCTION BOXES SHALL HAVE A PEDESTRIAN RATED GRATE OR NON-SLIP LID AND BE APPROVED BY THE DEPARTMENT.



SECTION B-B



SAN LUIS OBISPO COUNTY DEPARTMENT OF PUBLIC WORKS
SIDEWALK UNDERDRAIN
COMMERCIAL (ZERO SETBACK)

| | |
|----------------------------|----------------------|
| Scale: NTS | Issued: Aug. 2006 |
| Drawing No: D-4a | |
| Sheet No: 1 OF 1 | |