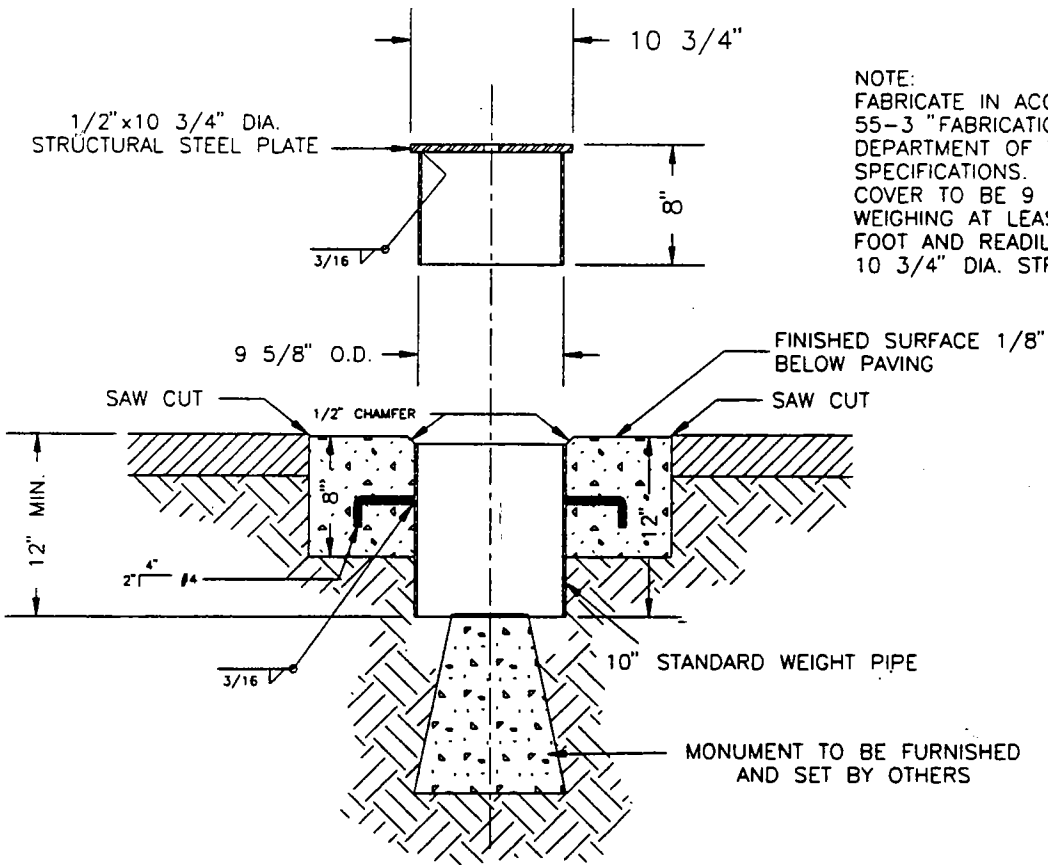


CONCRETE SHALL BE EITHER:  
 (A) 5-SACK (MIN.) WHERE STREET IS NOT COUNTY MAINTAINED OR OPEN TO TRAFFIC FOR 2 WEEKS AFTER PLACING.  
 (B) 6-SACK (MIN.) WHERE IN EXISTING STREET OR STREET BEING USED BY PUBLIC TRAFFIC.



NOTE:  
 FABRICATE IN ACCORDANCE WITH SECTION 55-3 "FABRICATION", OF THE CALIFORNIA DEPARTMENT OF TRANSPORTATION STANDARD SPECIFICATIONS.  
 COVER TO BE 9 5/8" O.D. CASING PIPE WEIGHING AT LEAST 32 LBS. PER LINEAR FOOT AND READILY WELDABLE TO 1/2" x 10 3/4" DIA. STRUCTURAL STEEL PLATE.

SECTION A-A

NOT TO SCALE

PLOTTED: 06/15/1995

ACAD FILE #23\R-58

Revisions	DATE:
Date Desc	6-15-1995
	DESIGNED BY: R.J.L.
	DRAWN BY: A.LUNA
	CHECKED BY:

COUNTY OF KERN  
 STATE OF CALIFORNIA  
**DEVELOPMENT  
 STANDARD**

STANDARD SURVEY  
 MONUMENT ENCASEMENT

PLATE NO.  
 R-58