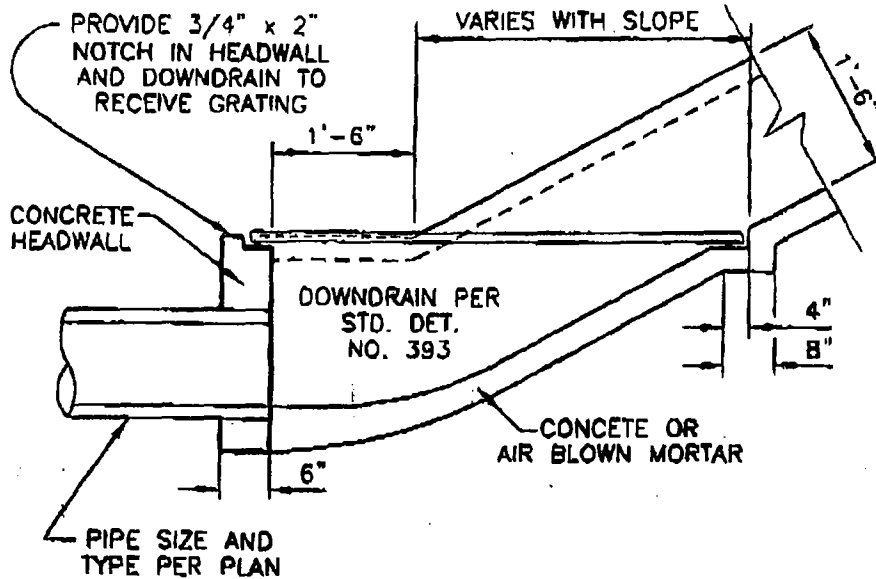
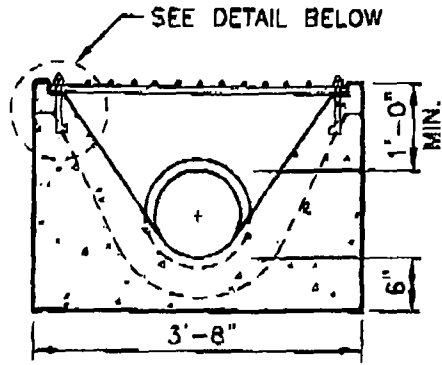


PLAN VIEW
N.T.S.

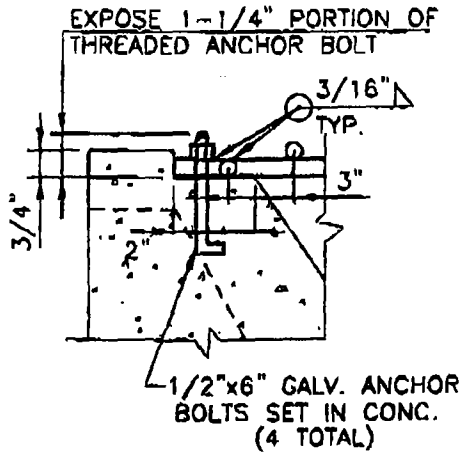


SECTION A-A
N.T.S.

REC'D	<i>[Signature]</i> DEPUTY CITY ENGINEER	DATE	11/17/04	APP.	<i>[Signature]</i> D.P.W. / CITY ENGINEER	DATE	11-18-04	REVISED	BY
CITY OF ANAHEIM DEPARTMENT OF PUBLIC WORKS								STANDARD DETAIL NO.	
DOWN DRAIN TO PIPE TRANSITION								395	
USE WITH STANDARD SPECIFICATIONS FOR PUBLIC WORKS CONSTRUCTION								SHEET 1 OF 3	



SECTION B-B
N.T.S.





EXPOSE 1-1/4" PORTION OF
THREADED ANCHOR BOLT

1/2"x6" GALV. ANCHOR
BOLTS SET IN CONC.
(4 TOTAL)

REC'D <i>[Signature]</i>	DATE 11/17/04	APP <i>[Signature]</i>	DATE 11-18-04	REVISED	BY
DEPUTY CITY ENGINEER		C.P.W. / CITY ENGINEER			
CITY OF ANAHEIM DEPARTMENT OF PUBLIC WORKS					
DOWN DRAIN TO PIPE TRANSITION				STANDARD DETAIL NO.	
USE WITH STANDARD SPECIFICATIONS FOR PUBLIC WORKS CONSTRUCTION				395	
				SHEET 2 OF 3	

NOTES:

1. DOWNDRAIN TO PIPE TRANSITION SHALL NOT BE USED WITHIN PUBLIC RIGHT-OF-WAY.
2. AFTER TRANSITION, PIPE SHALL OUTLET TO PARKWAY CULVERT, BACK OR SIDE OF CATCH BASIN, DRAINAGE SYSTEM OR RIPRAP OUTLET.
3. MATERIAL FOR CONSTRUCTION OF DOWNDRAIN SHALL BE CONCRETE OR AIR-BLOWN MOTAR REINFORCED WITH 6"x6"-W1.4xW1.4 WELDED WIRE FABRIC.
4. GROUND SHALL BE PRE-WETTED TO THE SATISFACTION OF THE CITY ENGINEER PRIOR TO PLACEMENT OF CONCRETE.
5. GRATE SHALL BE HOT DIP GALVANIZED AFTER FABRICATION.

REC'D		DATE	11/17/04	APP.		DATE	11-18-04	REVISED	BY
CITY OF ANAHEIM DEPARTMENT OF PUBLIC WORKS									
DOWN DRAIN TO PIPE TRANSITION								STANDARD DETAIL NO.	
USE WITH STANDARD SPECIFICATIONS FOR PUBLIC WORKS CONSTRUCTION								395	
								SHEET 1 OF 3	