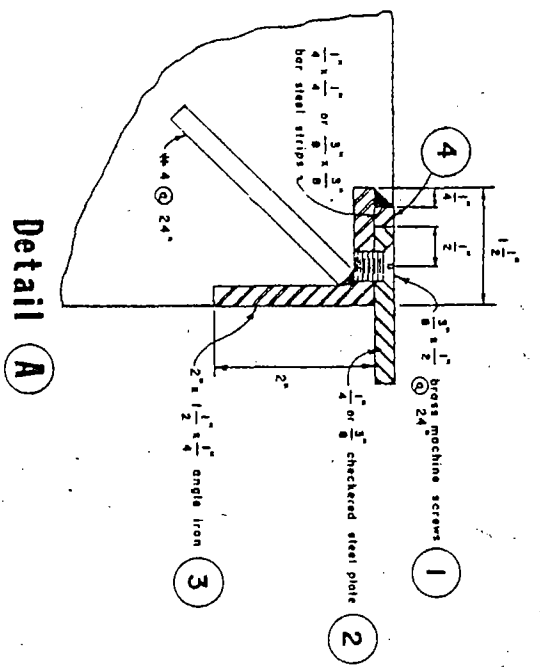
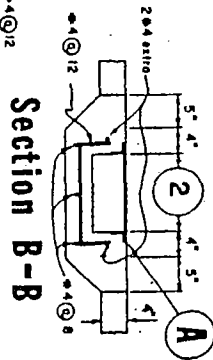
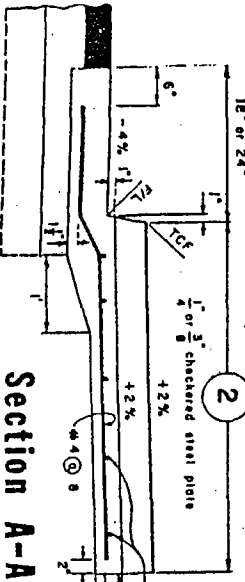
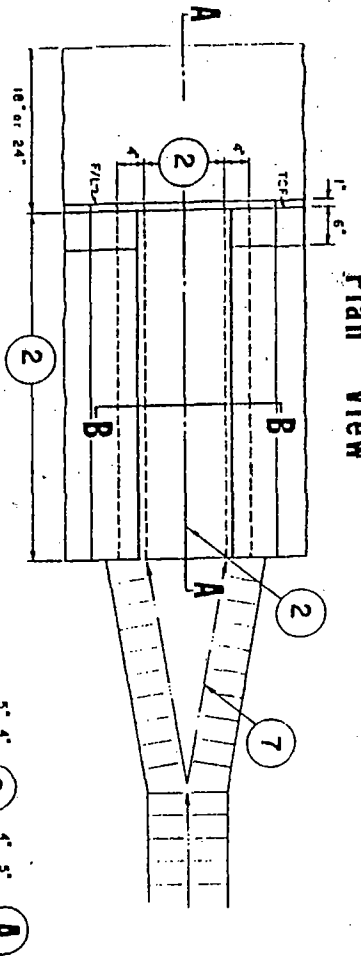


Plan View



- NOTES**
1. FLATHEAD MACHINE SCREWS 3/8" X 1 1/2". HOLES SHALL BE DRILLED AND TAPPED IN THE FIELD AT INTERVALS NOT TO EXCEED 2' CENTER TO CENTER.
 2. CHECKERED STEEL COVER PLATES ARE TO BE 1/4" WHEN WIDTH IS 2' OR LESS AND 3/8" WHEN WIDTH IS GREATER THAN 2'. PLATE WIDTHS SHALL NOT EXCEED 4'. WHEN THE LENGTH IS 6.5' OR LESS, PLATE SHALL BE ONE PIECE. WHEN THE LENGTH IS GREATER THAN 6.5', THE COVER PLATE SHALL BE SUPPLIED IN TWO EQUAL LENGTHS.

3. ANGLE IRON SUPPORT BRACKETS SHALL BE FABRICATED FROM 1-1/2" X 2" X 1/4" MATERIAL, WELD #4 BARS 2" LONG TO THE ANGLE IRON AS ANCHORS.
4. BAR STEEL STRIPS, 1/4" X 1/4" OR 3/8" X 3/8" SHALL BE TACK WELDED TO THE ANGLE IRON AT 12" INTERVALS.
5. A 1" LIP SHALL BE PROVIDED AT THE FLOW LINE AS SHOWN.
6. ALL CONCRETE SHALL BE CLASS B.
7. THE FLOW LINE OF GRADED V DITCHES SHALL HAVE A MINIMUM FLARE OF 5'.
8. THE CHECKERED STEEL COVER PLATES AND THE SUPPORT BRACKETS SHALL BE GALVANIZED AFTER FABRICATION.

COUNTY OF SANTA BARBARA, CA. - DEPARTMENT OF PUBLIC WORKS - ROADS DIV.

Approved by

2-070

SIDEWALK DRAIN

Charles J. Wagner 4/1/87
DIRECTOR OF PUBLIC WORKS DATE