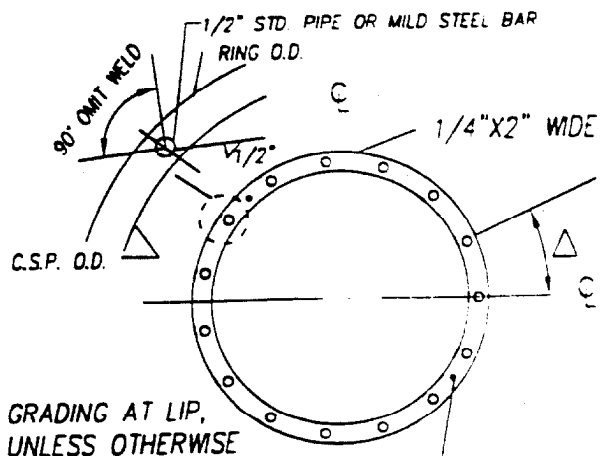
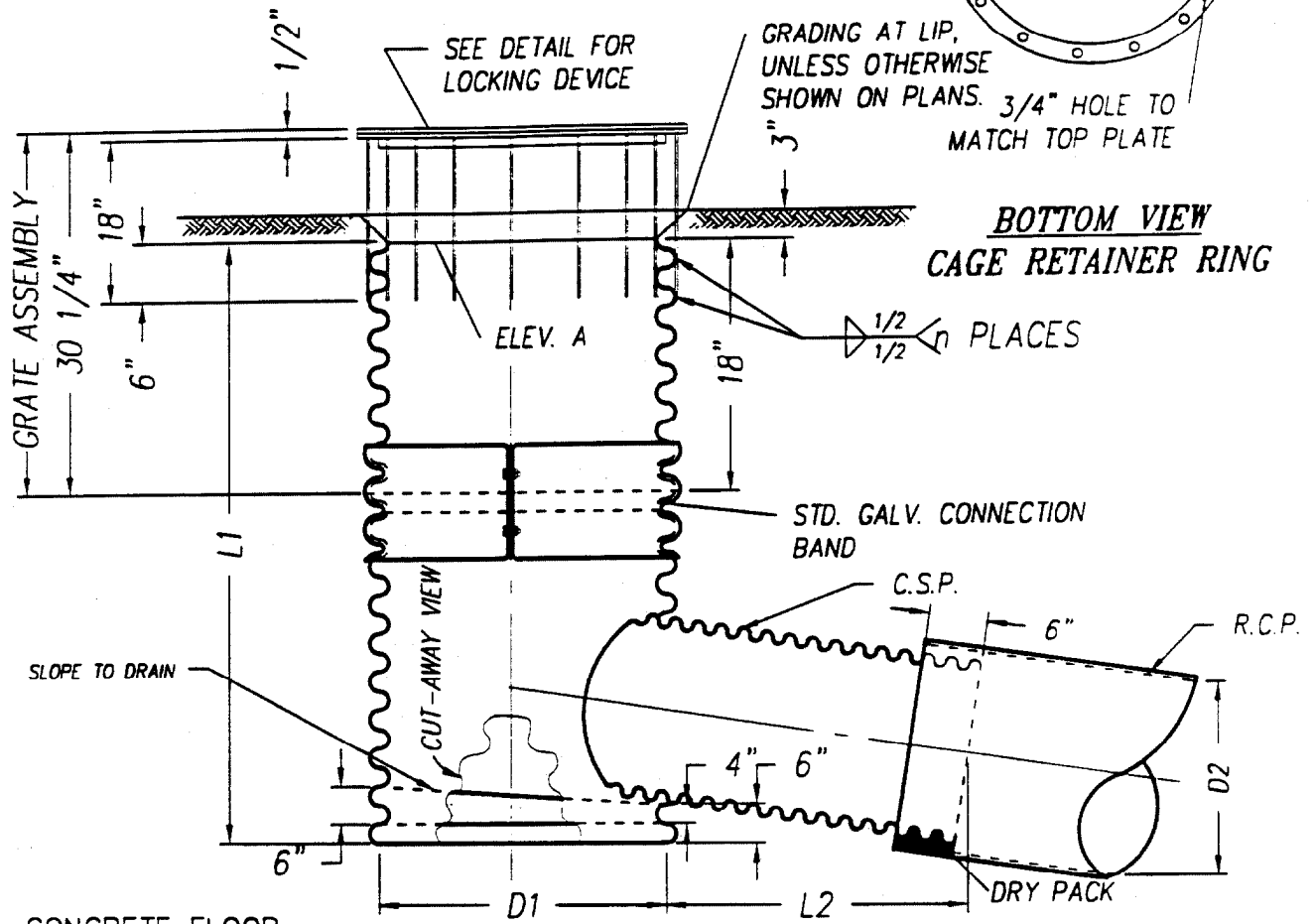


**BOTTOM VIEW  
TOP PLATE**



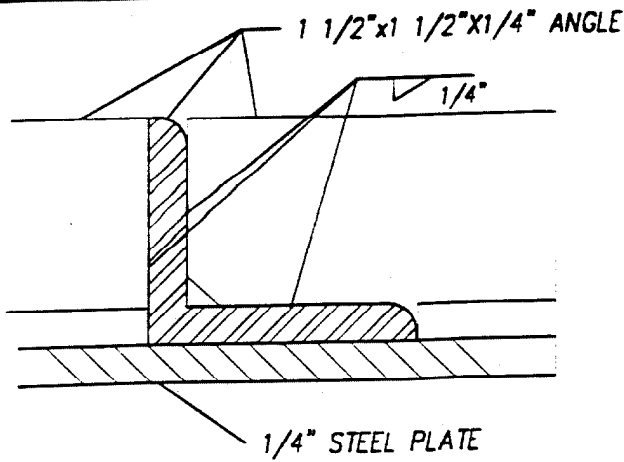
**BOTTOM VIEW  
CAGE RETAINER RING**



**ELEVATION**

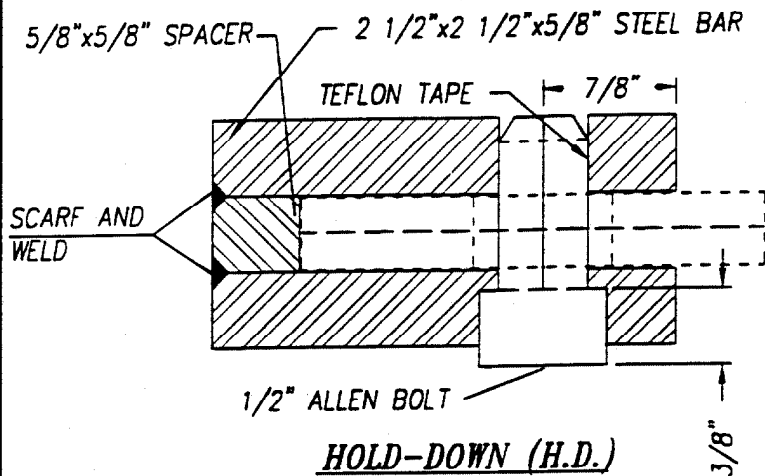
CONCRETE FLOOR -  
CLASS 560-C-3250 P.C.C.

<b>CITY OF RANCHO MIRAGE</b>		<b>STANDARD DETAIL 309 SHT. 1 OF 2</b>
<b>REVISIONS</b>	<b>CMP RISER INLET</b>	
	<i>William G. ...</i>	
	APPROVED BY: CITY ENGINEER	
	DATE	
	5/31/01	



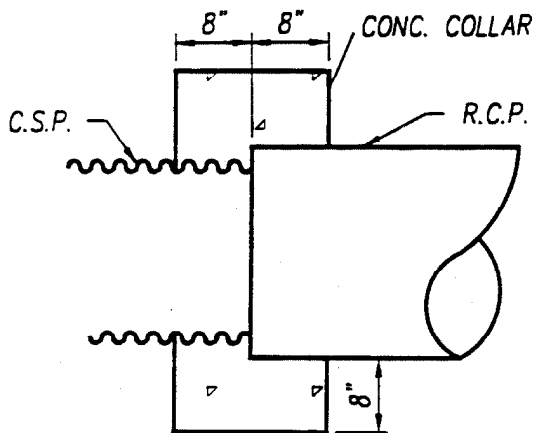
**DETAIL-PLATE STIFFENER**

D1	Δ	r	"HD"
18"	40°	9	
24"-27"	30°	12	2
30"-33"	20°	15	
36"-39"	20°	18	3
42"-45"	16.5°	22	
48"-51"	14.5°	25	
54"-57"	13°	28	4
60"-63"	11.5°	31	
66"	10.5°	34	



**HOLD-DOWN (H.D.)**

D1 RISER	C.S.P.
DIAMETER	GAUGE
18"-27"	16
30"-39"	14
42"-48"	12
51"-66"	10



**ALTERNATE JUNCTION**

**NOTES:**

1. RISER PIPE SHALL EXTEND TO "ELEV. A".
2. ELEVATION A, D1, D2 L1, L2 ARE SHOWN ON PLANS.
3. CORRUGATED STEEL PIPE SHALL CONFORM TO AASHO M-36.
4. GRATE ASSEMBLY SHALL BE GALVANIZED AFTER FABRICATION.
5. FOR D1=54" AND LARGER, WELD 1 1/2" X 1 1/2" X 1/4" ANGLES TO PLATE WITH 1" WELDS AT 6" O.C.
6. n=NUMBER OF BARS ON GRATE ASSEMBLY.
7. GAUGE OF PIPE FOR DIAMETER D2 SHALL BE SAME AS FOR RISER.
8. RISER AND STUB SHALL BE SHOP FABRICATED AND GALVANIZED AFTER WELDING.

**CITY OF RANCHO MIRAGE**

**STANDARD**

REVISIONS

**CMP RISER INLET**

**DETAIL**

**309**

APPROVED BY: *W. J. Harris* CITY ENGINEER DATE: *5/31/01*

**SHT. 2 OF 2**