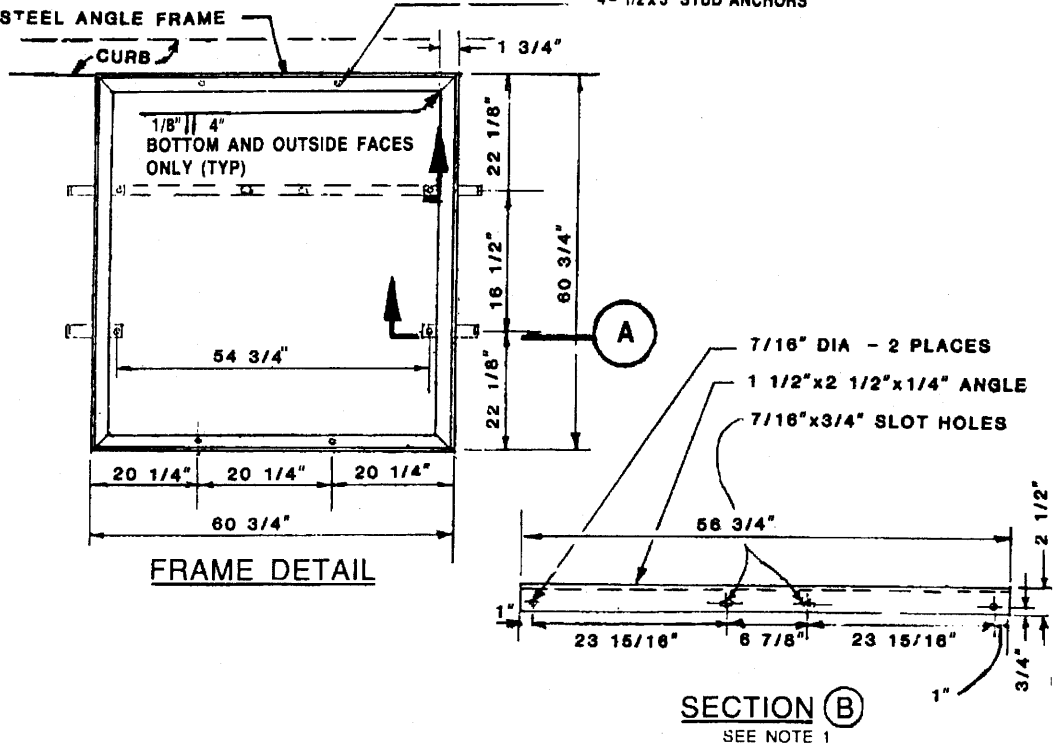


1 3/4"x1 3/4"x1/4"

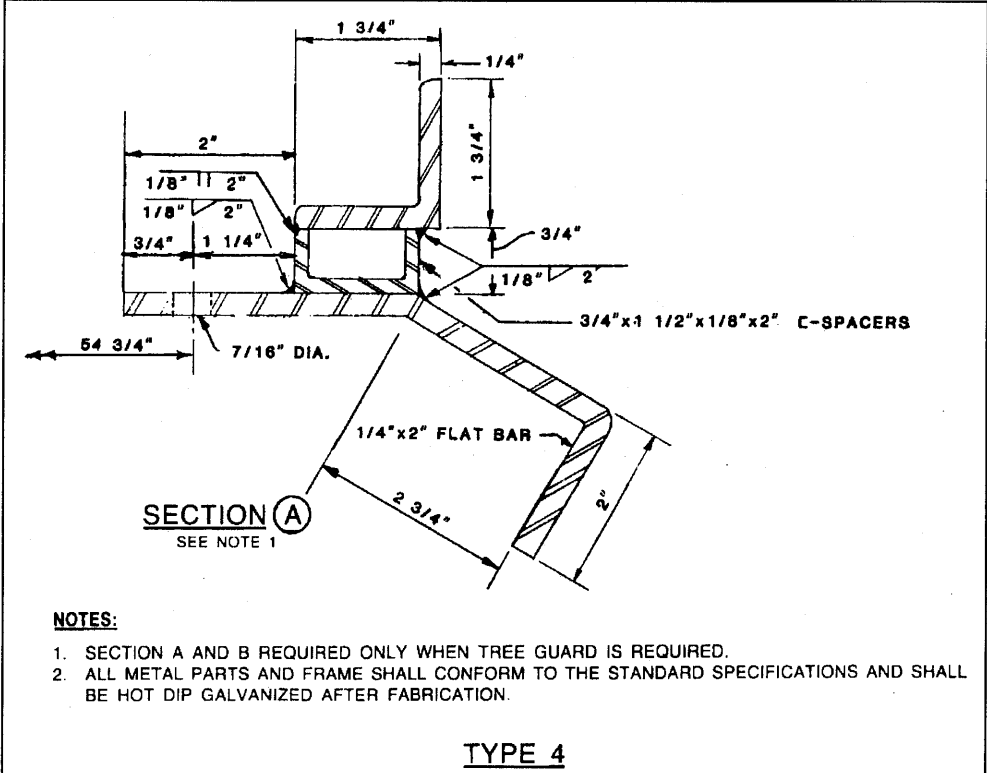
STEEL ANGLE FRAME

4- 1/2"x3" STUD ANCHORS



FRAME DETAIL

SECTION B  
SEE NOTE 1



SECTION A  
SEE NOTE 1

NOTES:

- 1. SECTION A AND B REQUIRED ONLY WHEN TREE GUARD IS REQUIRED.
- 2. ALL METAL PARTS AND FRAME SHALL CONFORM TO THE STANDARD SPECIFICATIONS AND SHALL BE HOT DIP GALVANIZED AFTER FABRICATION.

TYPE 4

A.P.W.A. STD. No. 519-1

REVISIONS:

APPROVED  
08/21/01

CHRIS A. VOGT  
CITY ENGINEER  
RCE 44250



City of La Quinta

TREE WELL

STANDARD

705

SHEET 6 OF 6