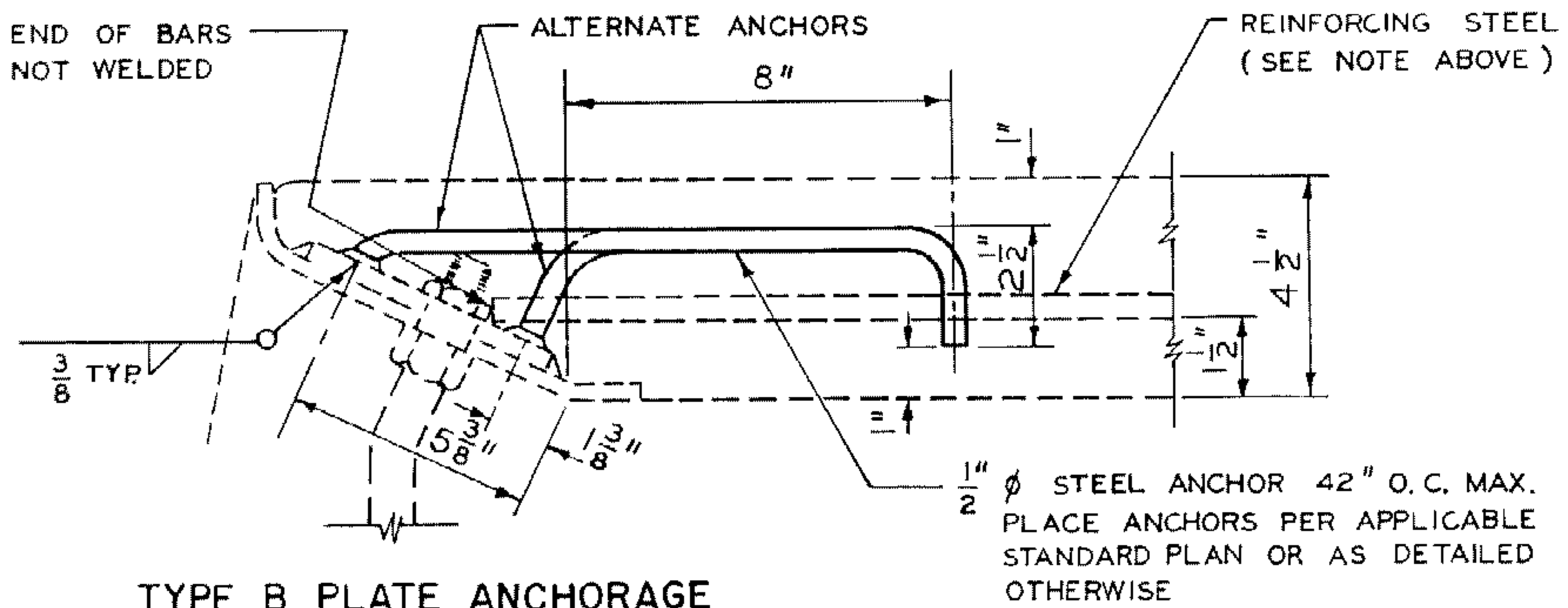


NOTES

1. PROTECTION BAR REQUIRED. BAR SHALL BE EMBEDDED 5" AT EACH END.
2. ALL EXPOSED METAL PARTS SHALL BE GALVANIZED.
3. WHEN REQUIRED BY LENGTH OF OPENING, PLATE ANGLE MAY BE DELIVERED IN SECTIONS AND BUTT WELDED IN PLACE. ALL GALVANIZING DAMAGED BY WELDING SHALL RECEIVE TWO COATS OF "GALVALLOY," "GALVICON" OR EQUAL.
4. TYPE "A" OR TYPE "B" ANCHORAGE MAY BE USED AT CONTRACTORS OPTION.
5. STIRRUP & SUPPORT BOLTS SHALL BE INSTALLED WHEN LENGTH OF OPENING EXCEEDS 7'-0" AND SHALL BE SPACED AT 7'-0" O.C. MAXIMUM.

SECTION OF BASIN INLET WITH TYPE A PLATE ANCHORAGE



TYPE B PLATE ANCHORAGE

DATE OF REVISIONS		NATURE OF	CITY OF SANTA ANA IMPROVEMENT STANDARD		STD. NO.
8-72	REN	# CHG.	AUXILIARY CATCH BASIN DETAILS		
12-73	REN	PROTECTION BAR	APPROVED <i>R. E. Wolford</i> CITY ENGINEER		305A
			DATE 4/27/72		