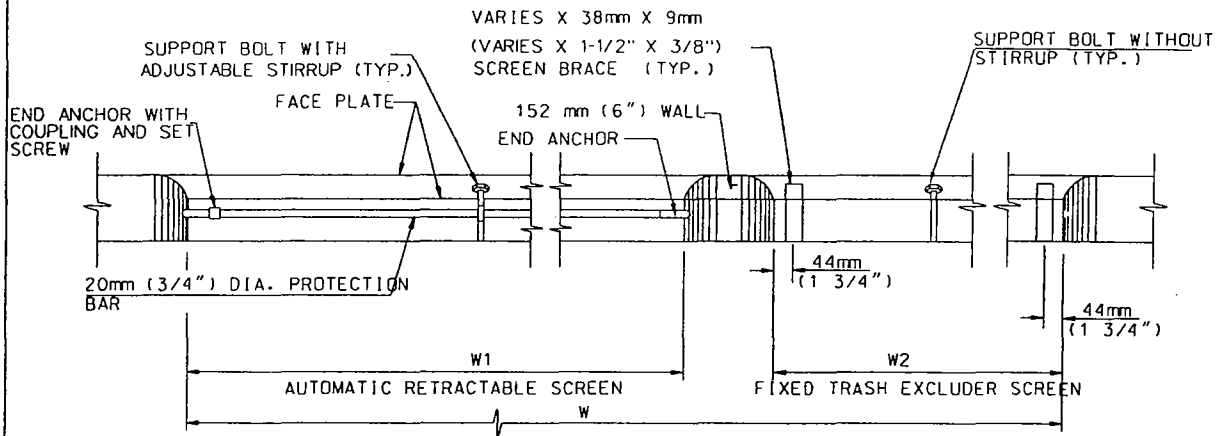
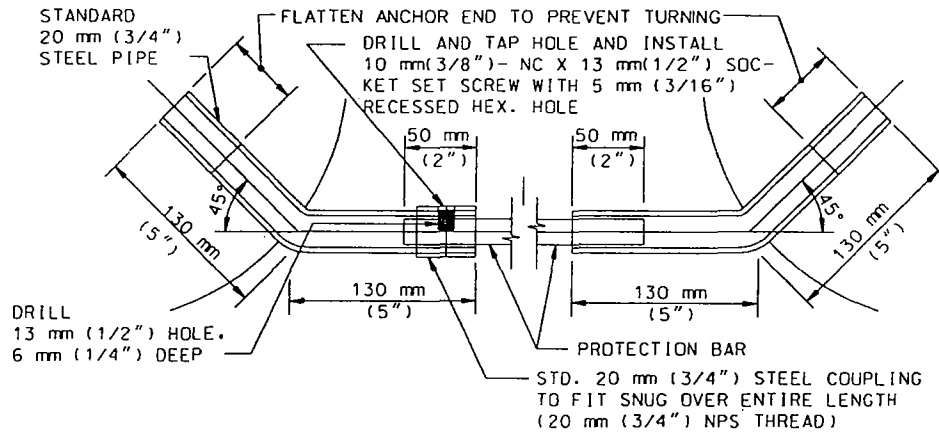


PROTECTION BAR AND SUPPORT BOLT WITH ADJUSTABLE STIRRUP



ELEVATION

NOTE: TRASH EXCLUDER SCREENS NOT SHOWN. SEE STANDARD PLANS FOR
CATCH BASINS WQ 300 AND WQ 315 FOR FIXED SCREEN BRACE DETAILS.



END ANCHOR WITH COUPLING AND SET SCREW DETAIL

LOS ANGELES COUNTY DEPARTMENT OF PUBLIC WORKS

CATCH BASIN FACE PLATE ASSEMBLY
AND PROTECTION BAR

STANDARD PLAN
WQ 310

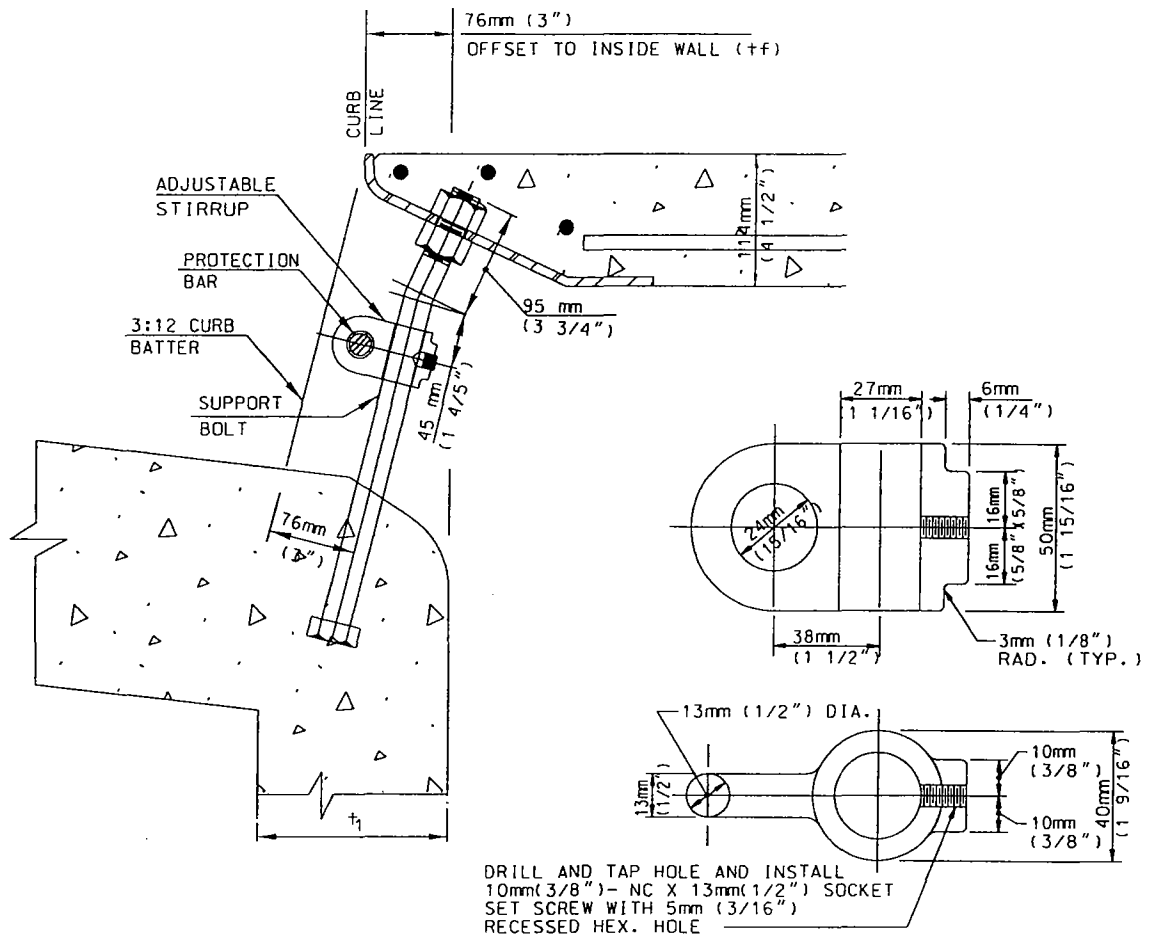
APPROVED _____

DIRECTOR OF PUBLIC WORKS

DATE _____

SHEET 1 OF 5

PROTECTION BAR AND SUPPORT BOLT WITH
ADJUSTABLE STIRRUP



STIRRUP DETAIL

PROTECTION BAR & STIRRUP LOCATION

LOS ANGELES COUNTY DEPARTMENT OF PUBLIC WORKS

CATCH BASIN FACE PLATE ASSEMBLY
AND PROTECTION BAR

STANDARD PLAN
WQ 310

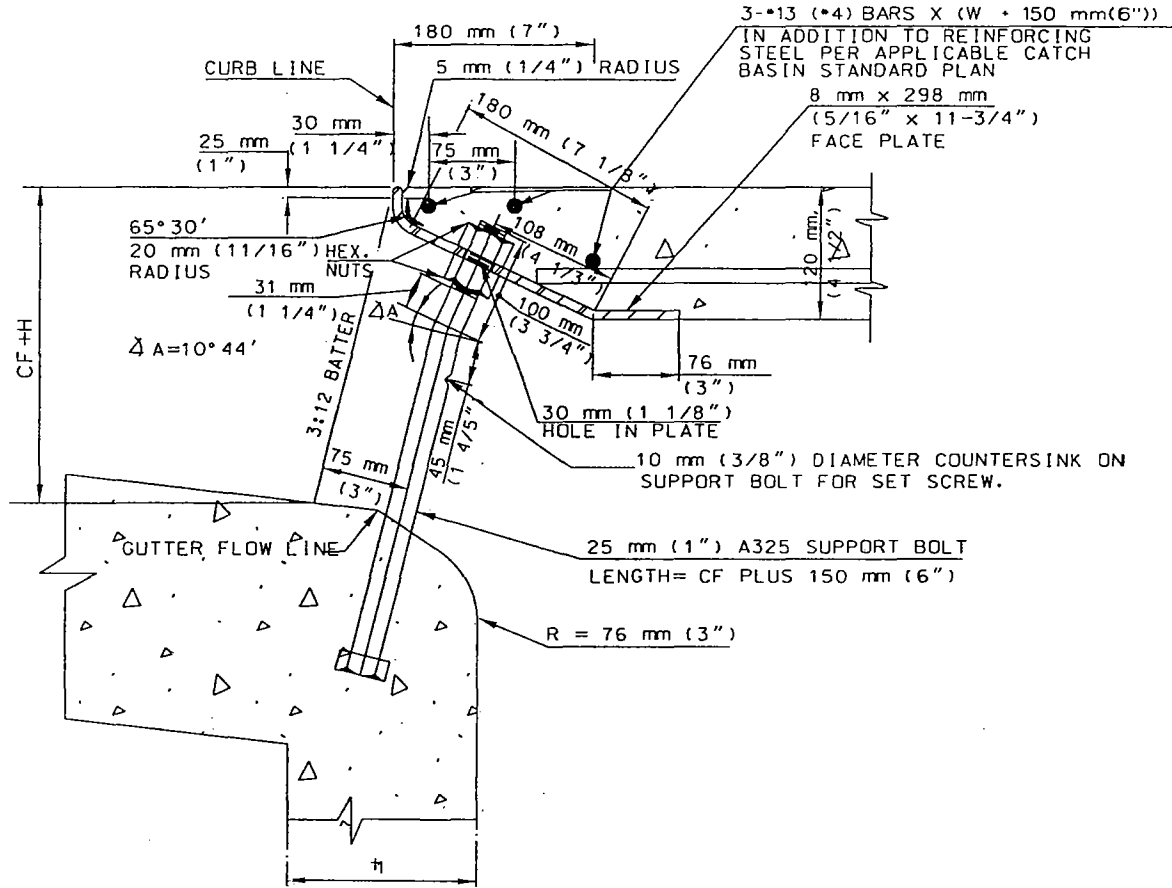
APPROVED _____

DIRECTOR OF PUBLIC WORKS

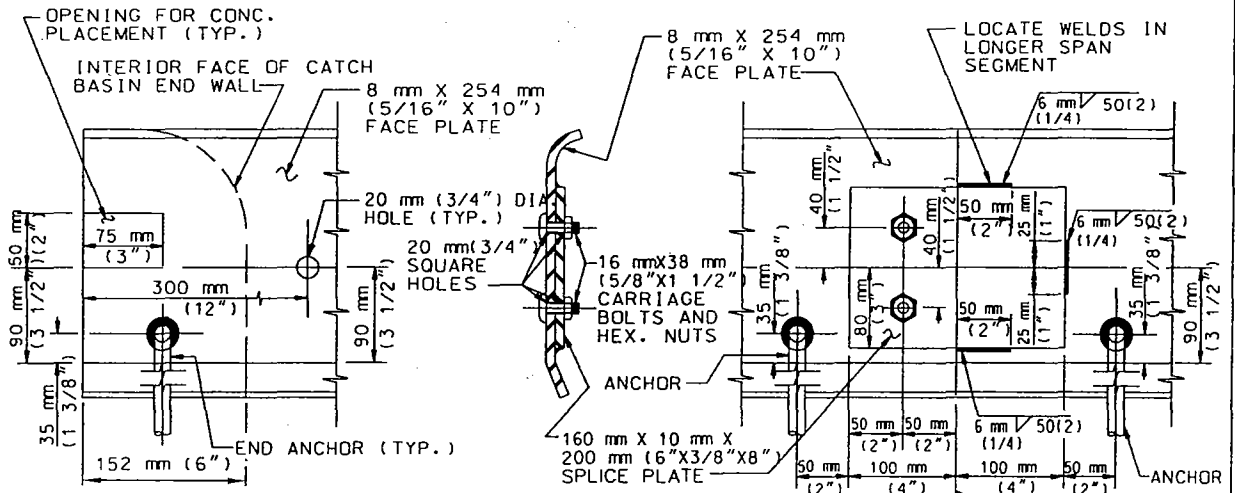
DATE _____

SHEET 2 OF 5

SUPPORT BOLT AND FACE PLATE (120 mm (4 1/2") TOP SLAB)



SECTION



END DETAIL

SPLICE DETAIL

LOS ANGELES COUNTY DEPARTMENT OF PUBLIC WORKS

CATCH BASIN FACE PLATE ASSEMBLY AND PROTECTION BAR

STANDARD PLAN

WQ 310

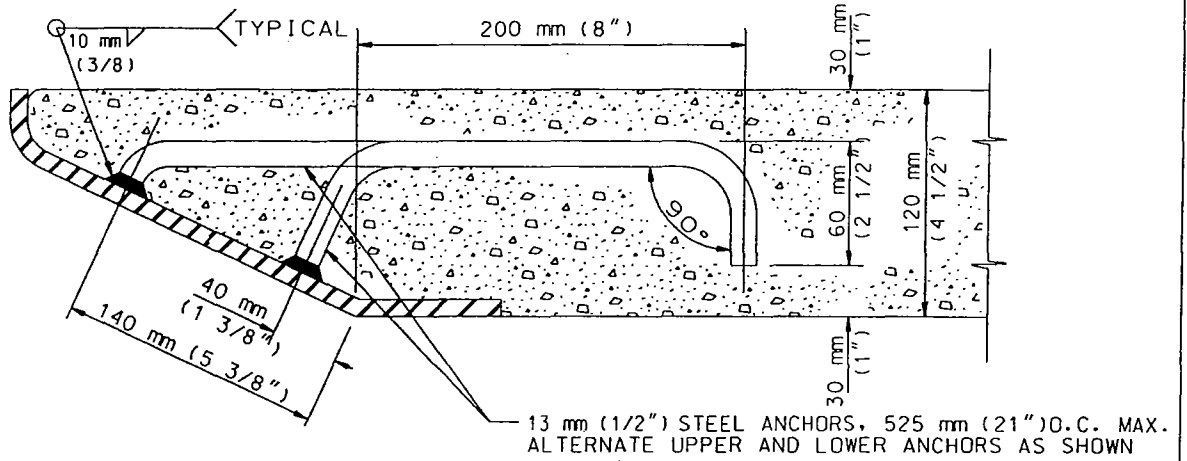
APPROVED

DIRECTOR OF PUBLIC WORKS

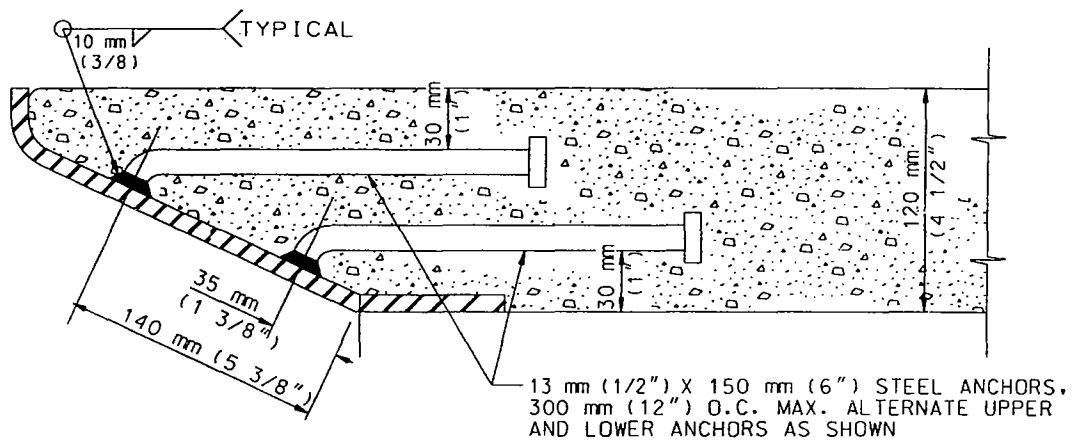
DATE

SHEET 3 OF 5

FACE PLATE ANCHORS



HOOK ANCHOR - 120 mm (4 1/2") TOP SLAB



ROUND HEAD ANCHOR - 120 mm (4 1/2") TOP SLAB (AT RECTANGULAR MANHOLE FRAME)

LOS ANGELES COUNTY DEPARTMENT OF PUBLIC WORKS

CATCH BASIN FACE PLATE ASSEMBLY
AND PROTECTION BAR

STANDARD PLAN
WQ 310

APPROVED _____

DIRECTOR OF PUBLIC WORKS

DATE _____

SHEET 4 OF 5

NOTES:

GENERAL

1. ALL PARTS SHALL BE STEEL, EXCEPT SET SCREWS, WHICH SHALL BE STAINLESS STEEL OR BRASS. ALL STRUCTURAL STEEL SHALL BE GRADE A36 AND BOLTS ARE A307 BOLTS EXCEPT AS NOTED.
2. EXCLUDING SET SCREWS, ALL EXPOSED METAL PARTS SHALL BE GALVANIZED AFTER FABRICATION.
3. CURB BATTER SHALL BE 3:12.
4. DIMENSIONS SHOWN ON THIS PLAN FOR METRIC AND ENGLISH UNITS ARE NOT EXACT EQUAL VALUES. IF METRIC VALUES ARE USED, ALL VALUES USED FOR CONSTRUCTION SHALL BE FOR METRIC BAR SIZES. IF ENGLISH UNITS ARE USED, ALL VALUES USED FOR CONSTRUCTION METRIC VALUES, EXCEPT REINFORCING BARS SIZES IN ENGLISH UNITS MAY BE SUBSTITUTED SHALL BE ENGLISH UNITS.
5. FOR DESIGN AND DETAILS NOT SHOWN, SEE STANDARD PLANS WQ 300 AND/OR WQ 301.
6. THE CATCH BASIN FACE PLATE ASSEMBLY AND PROTECTION BAR SHALL BE CONSTRUCTED PER SPPWC STANDARD PLAN 310, EXCEPT AS MODIFIED ON THIS STANDARD PLAN.
7. H= NOTED ON PROJECT PLANS, CF= CURB FACE

FACE PLATE

8. FACE PLATE LENGTHS SHALL BE CATCH BASIN W PLUS 300mm (12").
9. WHEN THE LENGTH OF THE FACE PLATE IS BETWEEN 6.5m (22') AND 13m (43'), TWO SECTIONS MAY BE USED. WHEN THE LENGTH EXCEEDS 13m (43'), THREE SECTIONS MAY BE USED. SECTIONS SHALL BE SPLICED. SPLICE SHALL BE PLACED 300mm (1') FROM A SUPPORT BOLT.
10. WHERE CATCH BASINS ARE TO BE CONSTRUCTED ON CURVES, THE MAXIMUM CHORD LENGTH FOR THE FACE PLATE SHALL BE SUCH THAT THE MAXIMUM PERPENDICULAR DISTANCE TO THE TRUE CURVE SHALL NOT EXCEED 25mm (1"). WHERE MORE THAN ONE CHORD IS REQUIRED, CHORD LENGTHS SHALL BE EQUAL. CHORD SECTIONS SHALL BE SPLICED AND MODIFIED TO FIT THE CHORD DEFLECTION
11. ROUND HEAD ANCHORS FOR THE FACE PLATE SHALL BE NELSON H-4F SHEAR CONNECTOR, KSN WELDING SYSTEMS DIVISION SHEAR CONNECTOR OR EQUAL.

SUPPORT BOLT

12. SUPPORT BOLTS ARE REQUIRED WHEN THE LENGTH OF THE CATCH BASIN OPENING W IS 2m (7') OR GREATER, AND SHALL BE EVENLY SPACED ACROSS THE OPENING. SPACING SHALL NOT BE LESS THAN 1m (3'-6") ON CENTER NOR GREATER THAN 2.1m (7') ON CENTER. SUPPORT BOLTS ARE REQUIRED IN THE W2 SECTION ONLY WHEN W2 IS GREATER THAN 2.1m (7'). A325 HIGH STRENGTH BOLTS SHALL BE USED FOR SUPPORT BOLTS.

STIRRUP

13. MATERIAL SHALL BE CAST STEEL.

PROTECTION BAR

14. THE BAR SHALL BE CUT TO FIT IN THE FIELD. WHEN "W" IS OVER 6 m (21'), THE PROTECTION BAR SHALL CONSIST OF 2 OR MORE SECTIONS. A SPECIAL CONNECTOR BETWEEN THE PROTECTION BAR PIECES SHALL CONSIST OF A 125 mm (5") LENGTH OF STANDARD 20 mm (3/4") PIPE WITH STANDARD COUPLINGS FULLY THREADED ONTO EACH END DRILLED AND TAPPED FOR A SOCKET SET SCREW AS DETAILED FOR THE DOWNSTREAM END ANCHOR.
15. BRACES FOR THE FIXED TRASH EXCLUDER SCREEN SHALL BE INSTALLED IN SECTION W2. SCREEN BRACES SHALL BE PLACED AT EACH END OF W2 AND AT A MAXIMUM SPACING OF 1.07m (3'-6").

LOS ANGELES COUNTY DEPARTMENT OF PUBLIC WORKS

CATCH BASIN FACE PLATE ASSEMBLY
AND PROTECTION BAR

STANDARD PLAN
WQ 310

APPROVED

DIRECTOR OF PUBLIC WORKS

DATE

SHEET 5 OF 5