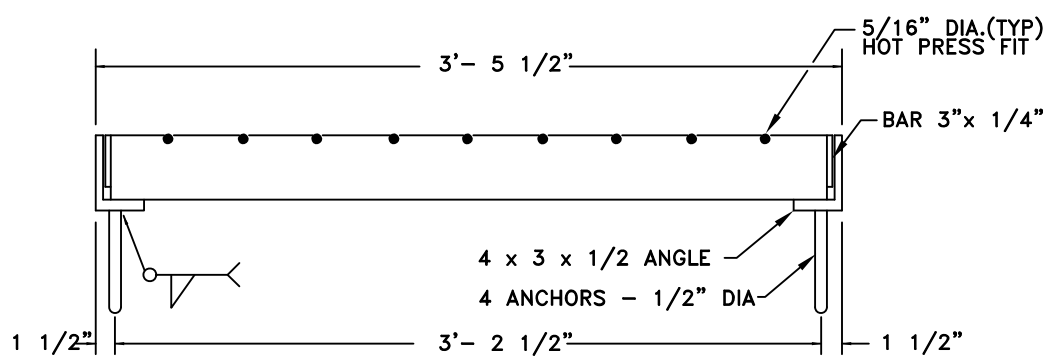


NOTE:
 AT THE CONTRACTOR'S
 OPTION, END SPACING OF 5/16"
 CROSS RODS MAY BE 2".
 INTERIOR SPACING SHALL
 REMAIN 4".



[Signature]
 ROB JENSEN
 DIRECTOR OF PUBLIC WORKS/CITY ENGINEER

 CITY OF ROSEVILLE CALIFORNIA	DEPARTMENT OF PUBLIC WORKS
---	-------------------------------

**DROP INLET FRAME AND GRATE
 FOR TYPE "C" INLETS**

SCALE: NONE
 REVISED: MARCH 2007
 DRAWN BY: STAFF
 APPROVED BY: R JENSEN

DR-9

NOTE:
 FOR CATCH BASINS EXCEEDING FOUR FEET IN DEPTH, AN 18 INCH LONG, 1/4 INCH X 1/8 INCH
 PROOF COIL CHAIN SHALL CONNECT THE GRATE AND FRAME. THE CHAIN SHALL BE WELDED
 TO THE STREET SIDE OF THE FRAME AND THE CURB SIDE OF THE GRATE AT THE SAME END.