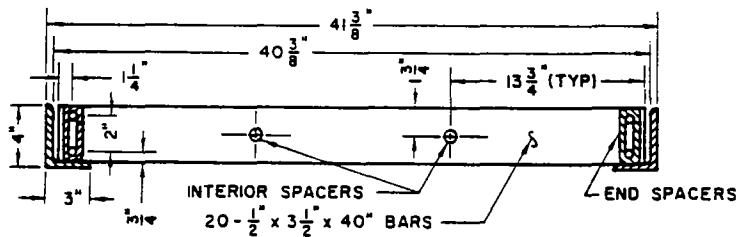


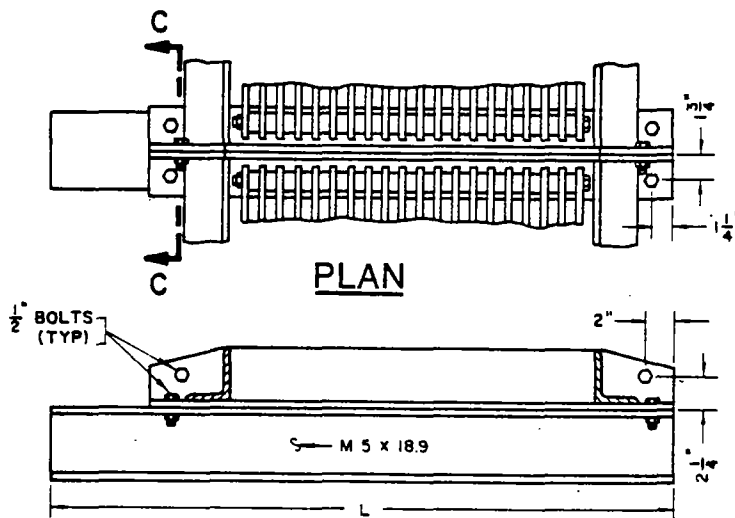
PLAN

SECTION A-A



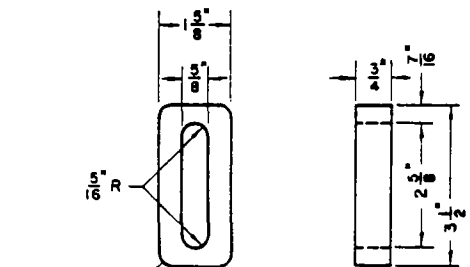
SECTION B-B

STANDARD 1/2" PIPE INTERIOR SPACERS

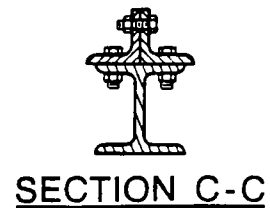


ELEVATION

CENTER SUPPORT ASSEMBLY



END SPACERS



SECTION C-C

REVISIONS		CITY OF LONG BEACH, CALIFORNIA DEPARTMENT OF PUBLIC WORKS	STANDARD PLAN NO.
NO.	DATE		
1		FRAME AND GRATING FOR CATCH BASINS	612
2			
3			
4			
APPROVED BY: <i>Edward J. Pate</i>		DATE: 6-26-89	SHEET
CITY ENGINEER R.E. No. 24233		EX. DATE 12-31-89	1 OF 2

NOTES:

1. ALL PARTS SHALL BE STEEL, EXCEPT THAT END SPACERS MAY BE CAST IRON.
2. ALL PARTS SHALL BE GALVANIZED AFTER FABRICATION, EXCEPT THAT GRATINGS SHALL BE ASSEMBLED AFTER COMPONENT PARTS ARE GALVANIZED.
3. ALL DIMENSIONS ARE FINISHED DIMENSIONS AND INCLUDE GALVANIZING.
4. ALL BOLT HOLES SHALL BE 5/8-"INCH DIAMETER.
5. ALL THREADS SHALL BE NATIONAL COARSE SERIES (NC).
6. CENTER SUPPORT ASSEMBLY REQUIRED WHEN TWO OR MORE GRATINGS ARE SPECIFIED ON PLANS.
 - L = 64 INCHES FOR CURB OPENING CATCH BASIN WITH GRATING(S) AND DEBRIS SKIMMER (STANDARD PLAN 301).
 - L = 44 INCHES FOR CURB OPENING CATCH BASIN WITH GRATING(S) (STANDARD PLAN 302).
 - L = 36 INCHES FOR CURBSIDE GRATING CATCH BASIN (STANDARD PLAN 303).
 - L = 36 INCHES FOR GRATING CATCH BASIN - ALLEY (LONGITUDINAL) (STANDARD PLAN 304).
7. WIDTH OF SPACERS MAY BE REDUCED AS NECESSARY TO OBTAIN CORRECT OVERALL GRATING WIDTH.
8. GRATES SHALL BE INSTALLED WITH APPROVED SAFETY DEVICES FOR BICYCLES.

REVISIONS		CITY OF LONG BEACH, CALIFORNIA DEPARTMENT OF PUBLIC WORKS	STANDARD PLAN NO.
NO.	DATE		
1		FRAME AND GRATING FOR CATCH BASINS	612
2			
3			
4			
APPROVED BY: <u>Edward J. Pety</u>		DATE: <u>6-26-89</u>	SHEET
CITY ENGINEER R.E. No. <u>24233</u>		EX. DATE <u>12-31-89</u>	<u>2</u> OF <u>2</u>