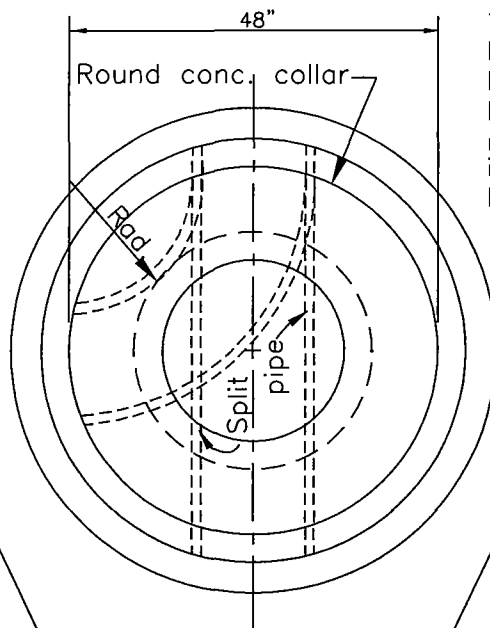


Plan view showing quarter bend to be used when making a turn.

Quarter turns to be constructed to form a smooth flow line of same shape and pattern as bottom wall of pipe.

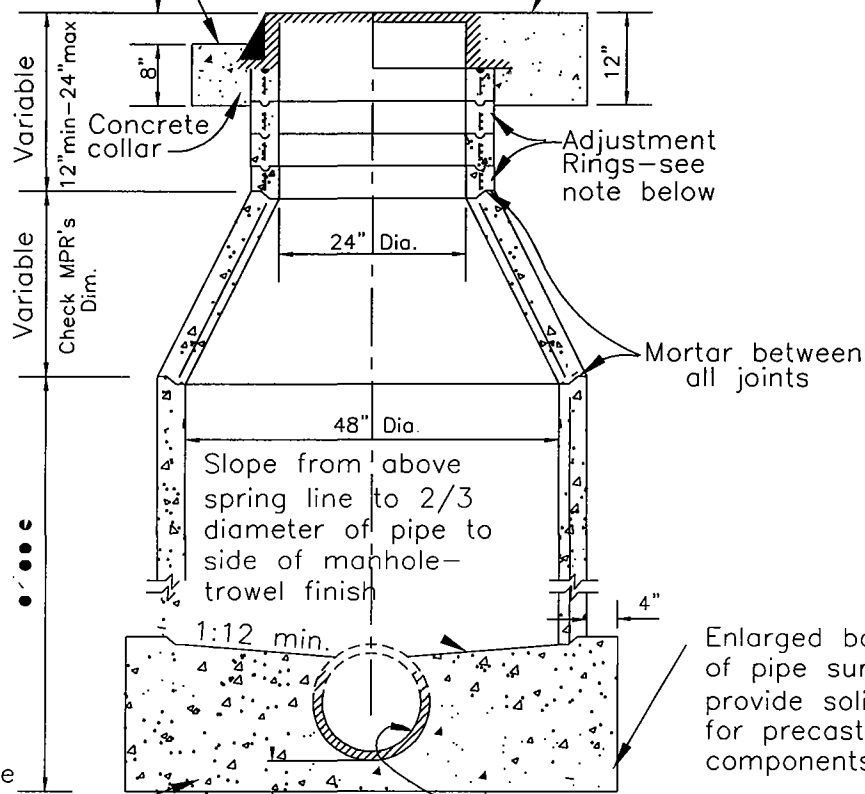
To be paved with A.C. (AR4000 or AR8000) tack-coat concrete. & metal surfaces prior to paving.



All straight pipe to be laid through manholes with top half removed to provide at least a 44" opening. Rough broken edges shall be mortared smooth. This also includes upper ends of line manhole.

Class "A" P.C.C. collar around C.I. frame - as shown. Set frame in conc. bed for conc. street only. Collar to be flush.

MANHOLE COVER & FRAME see Drawing S-5



Precast manhole pipe to set on class "A" concrete poured in place.

Enlarged base to top of pipe surface to provide solid footing for precast manhole components.

See plan for flow line elevation and size of pipe.

**MANHOLE DETAILS**

Scale: 1/2" = 1'-0"

**GENERAL NOTES:**

1. PRECAST PIPE, ADJUSTMENT RINGS AND TAPERED SECTIONS SHALL BE CLASS II R.C.P. IN ACCORDANCE WITH ASTM C-478. ELLIPTICAL SINGLE LINE REINFORCEMENT WILL NOT BE PERMITTED.
2. THIS STANDARD DRAWING SHALL BE USED FOR SEWER PIPES WITH DIAMETERS OF UP TO 27".

**48" SEWER MANHOLE WITH PRECAST SECTIONS AND CAST IRON FRAME & COVER**

REF. & REV.  
AUG. 2002

CITY OF FRESNO  
S-3