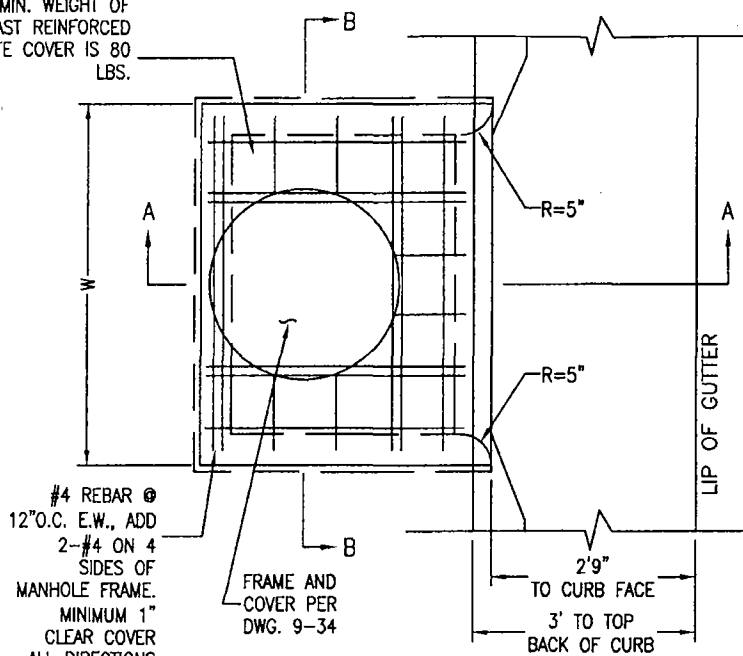


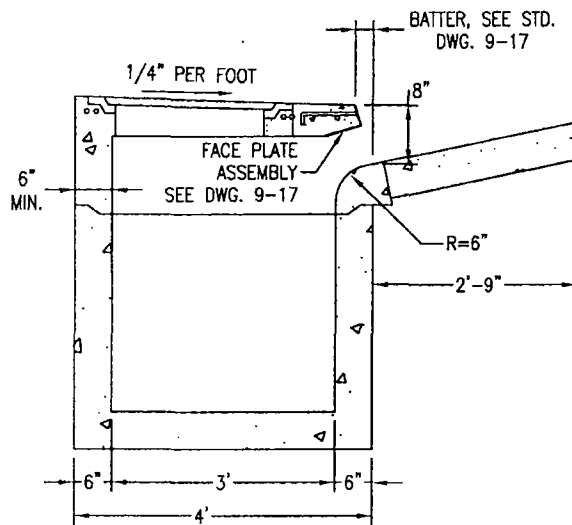
MIN. WEIGHT OF
PRECAST REINFORCED
CONCRETE COVER IS 80
LBS.



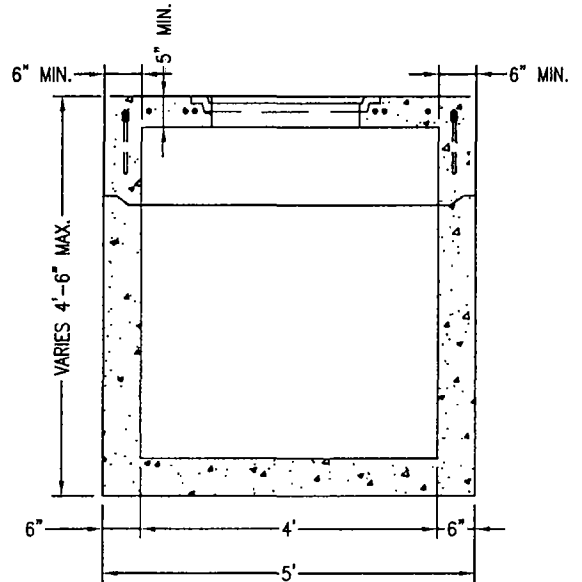
#4 REBAR @
12" O.C. E.W., ADD
2-#4 ON 4
SIDES OF
MANHOLE FRAME.
MINIMUM 1"
CLEAR COVER
ALL DIRECTIONS

FRAME AND
COVER PER
DWG. 9-34

PLAN



SECTION A-A



SECTION B-B

NOTES:

1. CURB INLET ASSEMBLY MAY BE PRECAST CONCRETE, OR FORMED AND CAST-IN-PLACE P.C.C.
2. EXPOSED SURFACES OF THE GRATES, FRAMES AND HOODS, WITH THE PARTS ASSEMBLED AND DISASSEMBLED, SHALL BE PAINTED WITH COMMERCIAL QUALITY ASPHALTUM PAINT AFTER TESTING AND ASSEMBLY.
3. SEE STD. DWG. 9-17 FOR FACE PLATE ASSEMBLY.

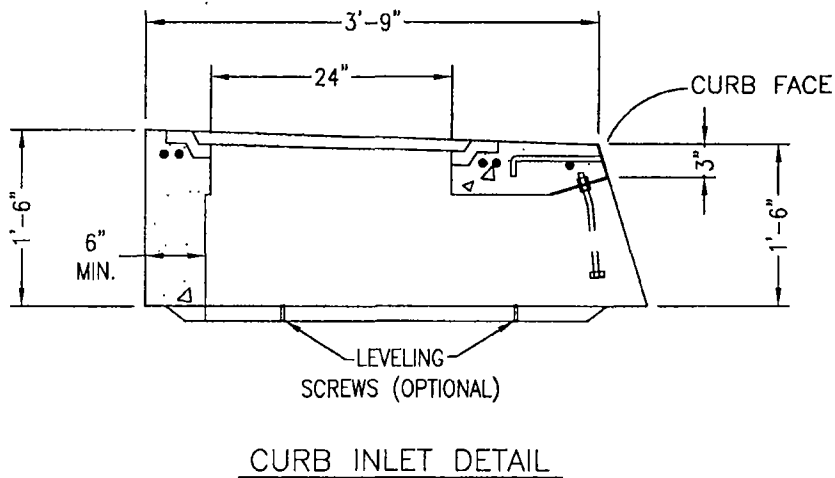
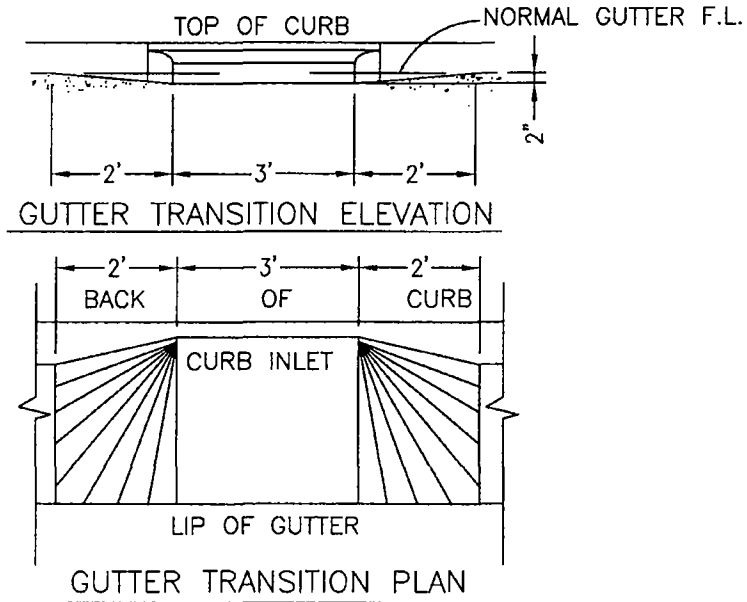
Keith Delton
DIRECTOR, DEPARTMENT OF WATER RESOURCES

SACRAMENTO COUNTY
MUNICIPAL SERVICES AGENCY

DROP INLET
TYPE G
Type 2 C & G Only

DRAWN BY: L. PETERS
SCALE: NONE
DATE: 04/07

9-19
SHEET 1 OF 2



NOTES:

1. CURB INLET ASSEMBLY MAY BE PRECAST CONCRETE, OR FORMED AND CAST-IN-PLACE P.C.C.
2. EXPOSED SURFACES OF THE GRATES, FRAMES AND HOODS, WITH THE PARTS ASSEMBLED AND DISASSEMBLED, SHALL BE PAINTED WITH COMMERCIAL QUALITY ASPHALTUM PAINT AFTER TESTING AND ASSEMBLY.

Keith DeBruin
 DIRECTOR, DEPARTMENT OF WATER RESOURCES

SACRAMENTO COUNTY
 MUNICIPAL SERVICES AGENCY

DROP INLET
TYPE G
 Type 2 C & G Only

DRAWN BY: L. PETERS
 SCALE: NONE
 DATE: 04/07

9-19
 SHEET 2 OF 2