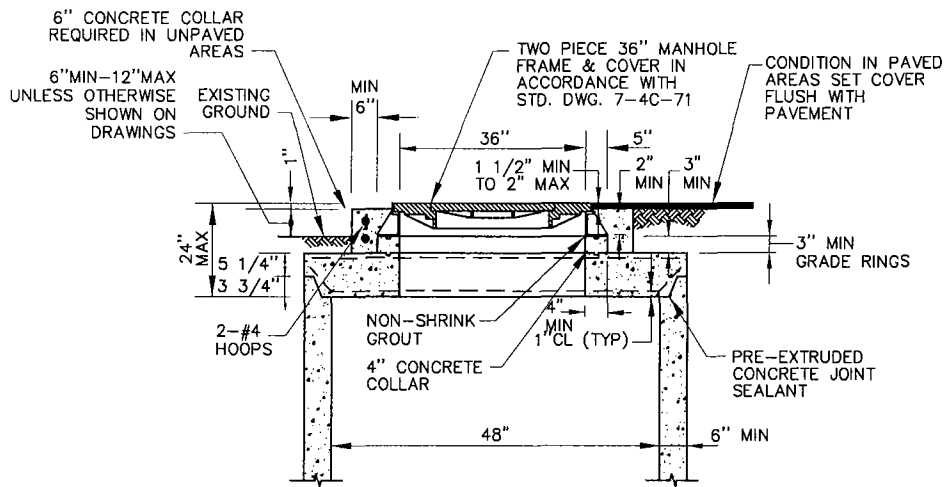


PLAN



SECTION A-A

NOTES:

1. JOINTS FOR THE BARREL SECTION SHALL BE TONGUE AND GROOVE OR LAP JOINT. ALL JOINTS MUST BE SEALED WITH GULF STATES PRE-EXTRUDED CONCRETE JOINT SEALANT OR APPROVED EQUAL.
2. FOR ASPHALTIC CONCRETE OVERLAYS ONLY, MANHOLES WITH DEPTHS OF 8' AND GREATER (MEASURED FROM THE FLOW LINE TO THE TOP OF CASING) THE MAXIMUM THROAT DEPTH IS 24 INCHES.
3. ALL MANHOLE SECTIONS TO BE FITTED WITH EXTERNAL LIFTING PINS, NO THROUGH PENETRATION HOLES ALLOWED.

SACRAMENTO COUNTY
MUNICIPAL SERVICES AGENCY

**STANDARD PRECAST
48" MANHOLE FLAT SLAB
TOP DETAIL**

DRAWN BY: RAS
SCALE: NONE
DATE: 11/07

7-4C-50

Mary K Snyder
DIRECTOR