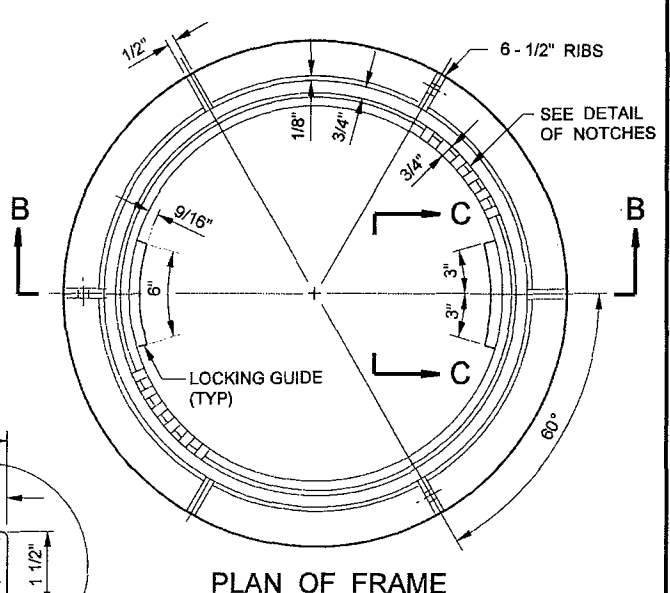
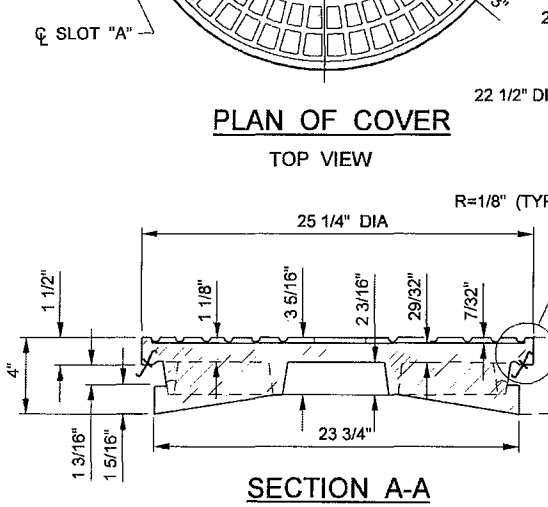


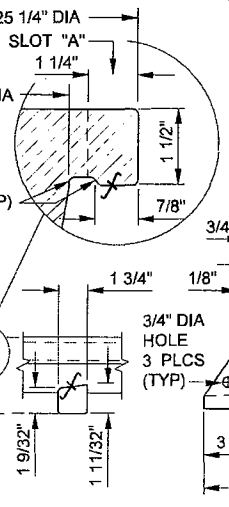
PLAN OF COVER
TOP VIEW



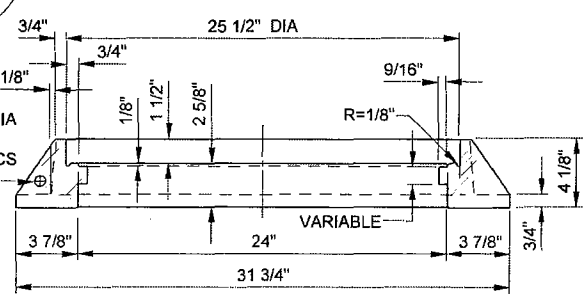
PLAN OF FRAME



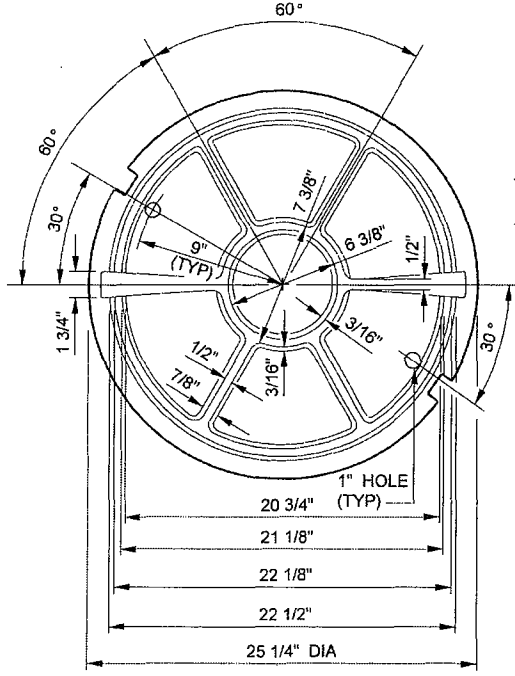
SECTION A-A



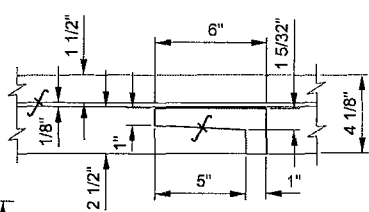
END VIEW
COVER LUG



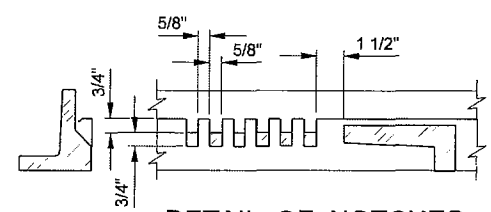
SECTION B-B



PLAN OF COVER
BOTTOM VIEW



SIDE VIEW C-C
LOCKING GUIDE



DETAIL OF NOTCHES

NOTES:

1. CAST IRON USED SHALL CONFORM WITH ASTM A-48 CLASS 35B.
2. FRAME AND COVER SHALL BE COATED WITH ASPHALTUM OR BITUMINOUS PAINT AFTER TESTING AND INSPECTION.
3. FRAME AND COVER SHALL BE TESTED FOR ACCURATE FIT PRIOR TO DELIVERY AND SHALL BE MARKED IN SETS.
4. ALL CASTINGS SHALL COMPLY WITH SECTION 206-3 OF THE STANDARD SPECIFICATIONS.

COUNTY SANITATION DISTRICTS OF LOS ANGELES COUNTY
OFFICE OF CHIEF ENGINEER

STEPHEN R. MAGUIN
CHIEF ENGINEER

STANDARD 24" LOCKING MANHOLE
FRAME AND COVER

STANDARD DRAWING
2006 EDITION
S - a - 207
SHEET 1 OF 1