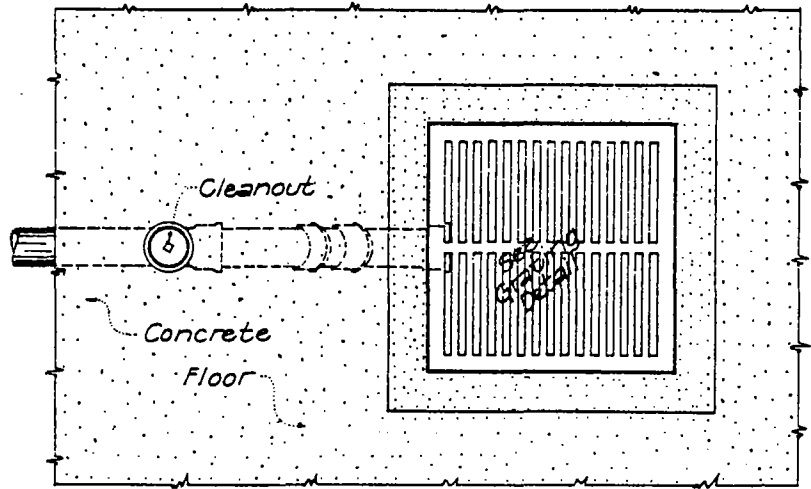


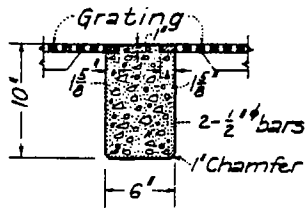
NOTES:

Concrete in trap pit to be of Class "A" (6 sacks per cu. yd.) unless otherwise specified.

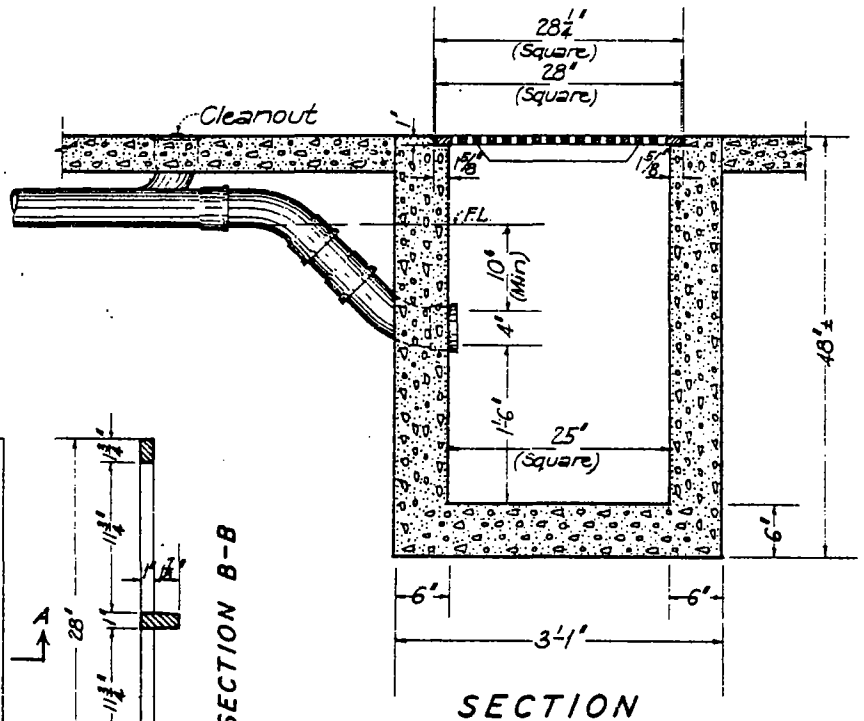
Grating to be of gray iron and shall conform to the requirements of the Specifications for Gray Iron Castings of the American Society for Testing Materials, serial designation A 48-36, Class 40, with subsequent amendments.



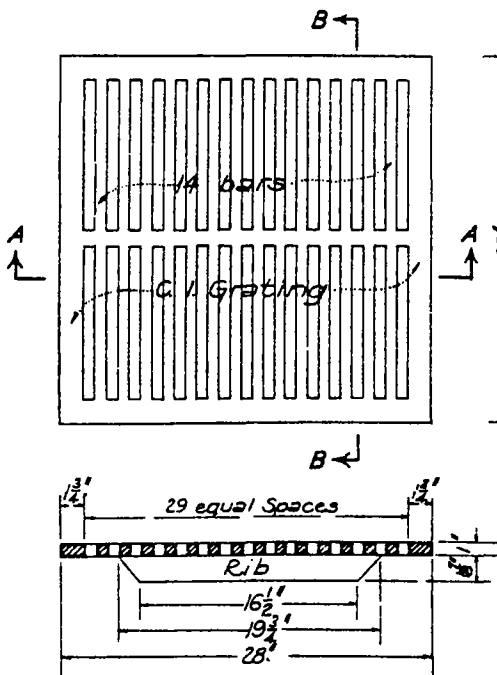
PLAN



SUPPORT BEAM FOR DOUBLE GRATE INSTALLATION



SECTION



SECTION A-A GRATING DETAILS

APPROVED BY THE CITY COUNCIL <i>June 30, 1941</i> <i>W. Van Riper</i> CITY CLERK	STANDARD SAND TRAP	DATE: May 19, 1941 DRAWN: <i>[initials]</i> CHECKED: <i>[initials]</i> SCALE: None
APPROVED <i>J. Hoffelder</i> CITY ENGINEER		CITY OF BAKERSFIELD CALIFORNIA ENGINEERING DEPARTMENT